

Douglas County Community Wildfire Protection Plan (CWPP) Process

Community Wildfire Protection Planning





Community Wildfire Protection Plans (CWPPs)

- Colorado Senate Bill 09-001, 2009
 - *Concerning the Establishment of Community Wildfire Protection Plans by County Governments*
 - *Colorado State Forest Service Minimum Standards for Developing CWPPs*

Douglas County CWPP Process

- Core Team
- Public outreach/stakeholder input

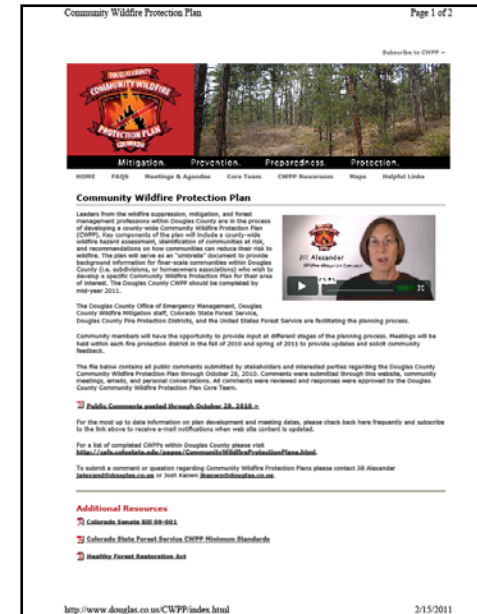


www.douglas.co.us/CWPP/

Mitigation. Prevention. Preparedness. Protection.

Post cards

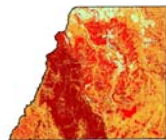
- Plan development



<http://www.douglas.co.us/cwpp>

Hazard Assessment

- Potential Fire Behavior
- Response Time
- Fuel Model
- Suppression Complexity



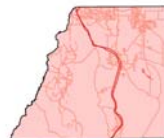
Difficulty to Control

- Structures
- Water Treatment Plants
- Power Lines
- Municipal Watersheds
- Local Public Lands

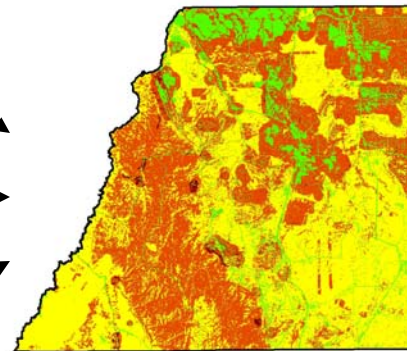


Values

- Lightning
- Rail Roads
- Campgrounds
- Major Roads
- Trails



Ignition Risk



Hazard Map

COMMUNITY WILDFIRE HAZARD POTENTIAL MAP

Douglas County, Colorado CWPP



Mitigation: Prevention, Preparedness, Protection

Legend

COMMUNITY RANKINGS

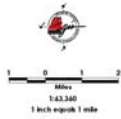
- Extreme
- Very High
- High
- Moderate
- Mixed

- INCORPORATED AREA
- DOUGLAS COUNTY BOUNDARY
- LAKE/RESERVOIR
- STREAM
- MAJOR ROAD
- LOCAL ROAD
- FIRE STATION
- LOOKOUT TOWER

OWNERSHIP

- DOUGLAS COUNTY PARKS AND OPEN SPACE
- HIGHLANDS RANCH COMMUNITY ASSOCIATION
- COLORADO DIVISION OF WILDLIFE
- MUNICIPALITY OWNED OPEN SPACE IN UNINCORPORATED DOUGLAS COUNTY
- STATE LAND BOARD
- COLORADO STATE PARKS
- CITY AND COUNTY OF DENVER
- USDA FOREST SERVICE
- DENVER WATER BOARD

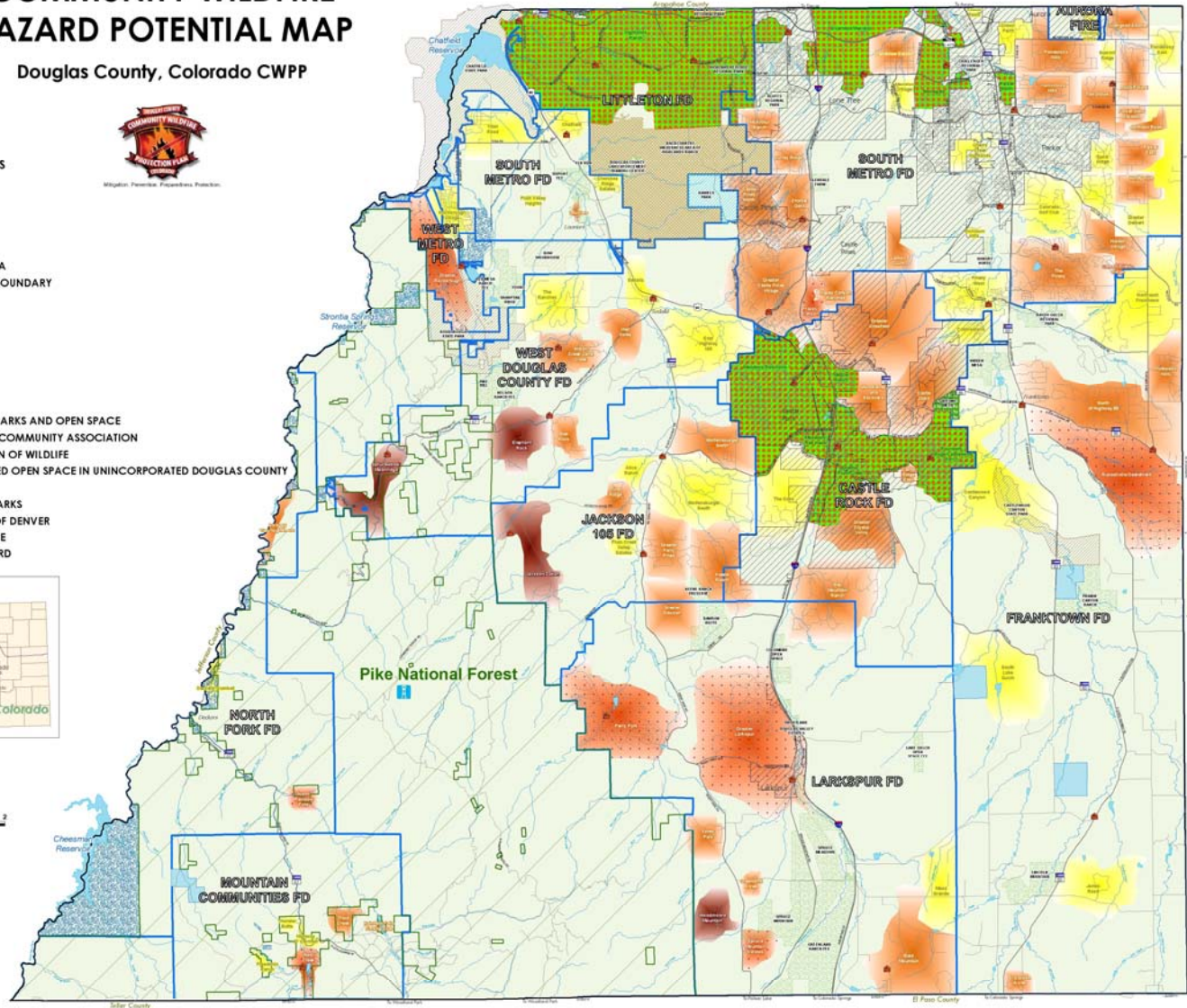
Vicinity Map



2013-2018

This map was prepared for Douglas County as a planning tool. It is not intended to be used for legal purposes. Douglas County is not responsible for any errors or omissions on this map. The map is provided as a general guide and should not be used as a basis for any legal action. The map is subject to change without notice. The map is not a warranty of any kind. The map is provided as a general guide and should not be used as a basis for any legal action. The map is subject to change without notice. The map is not a warranty of any kind.

Prepared by Douglas County GIS Department





Next Steps

- Continue with community meetings
- Draft plan to be posted on the website for comment
- Finalize plan July 2011