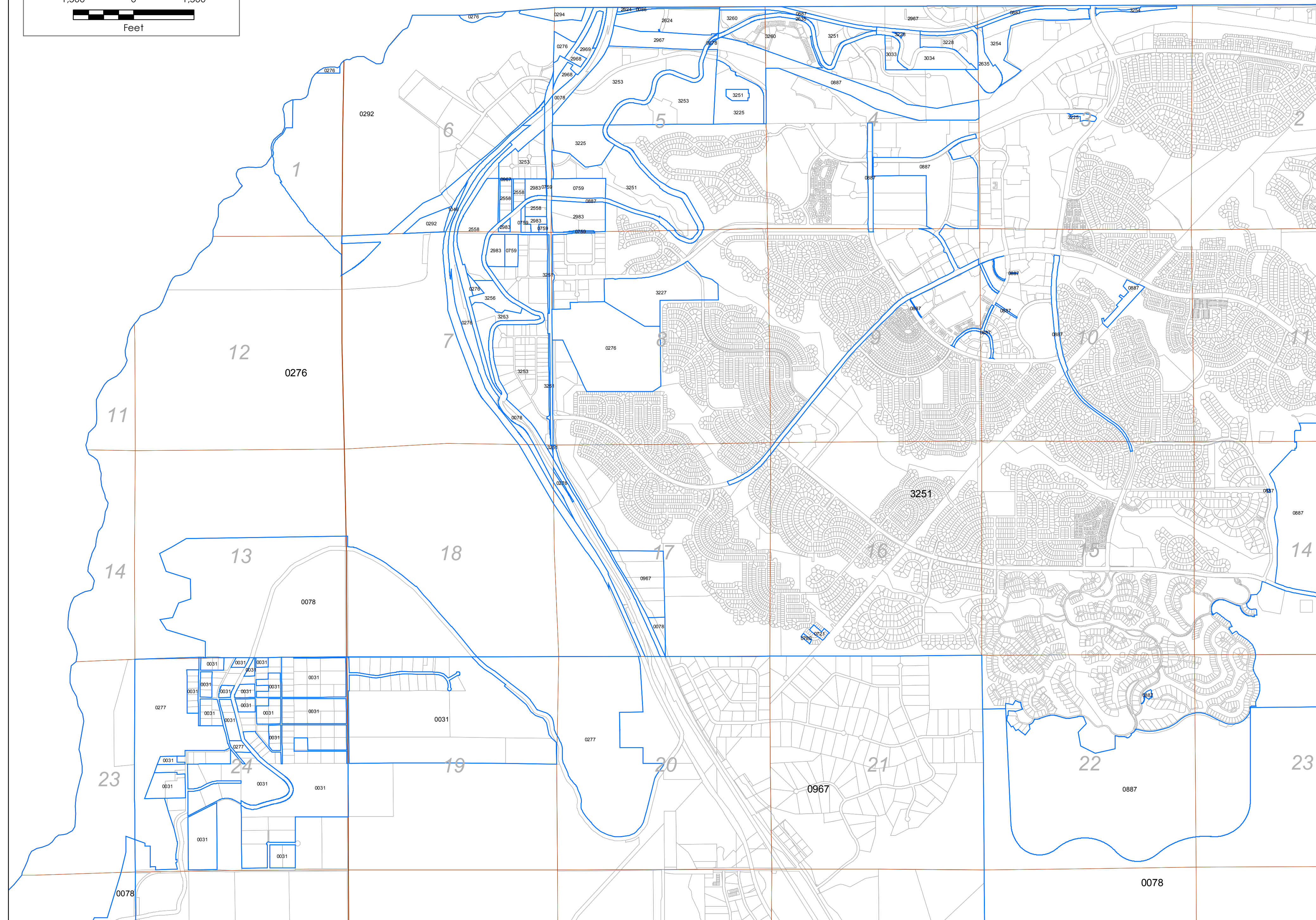
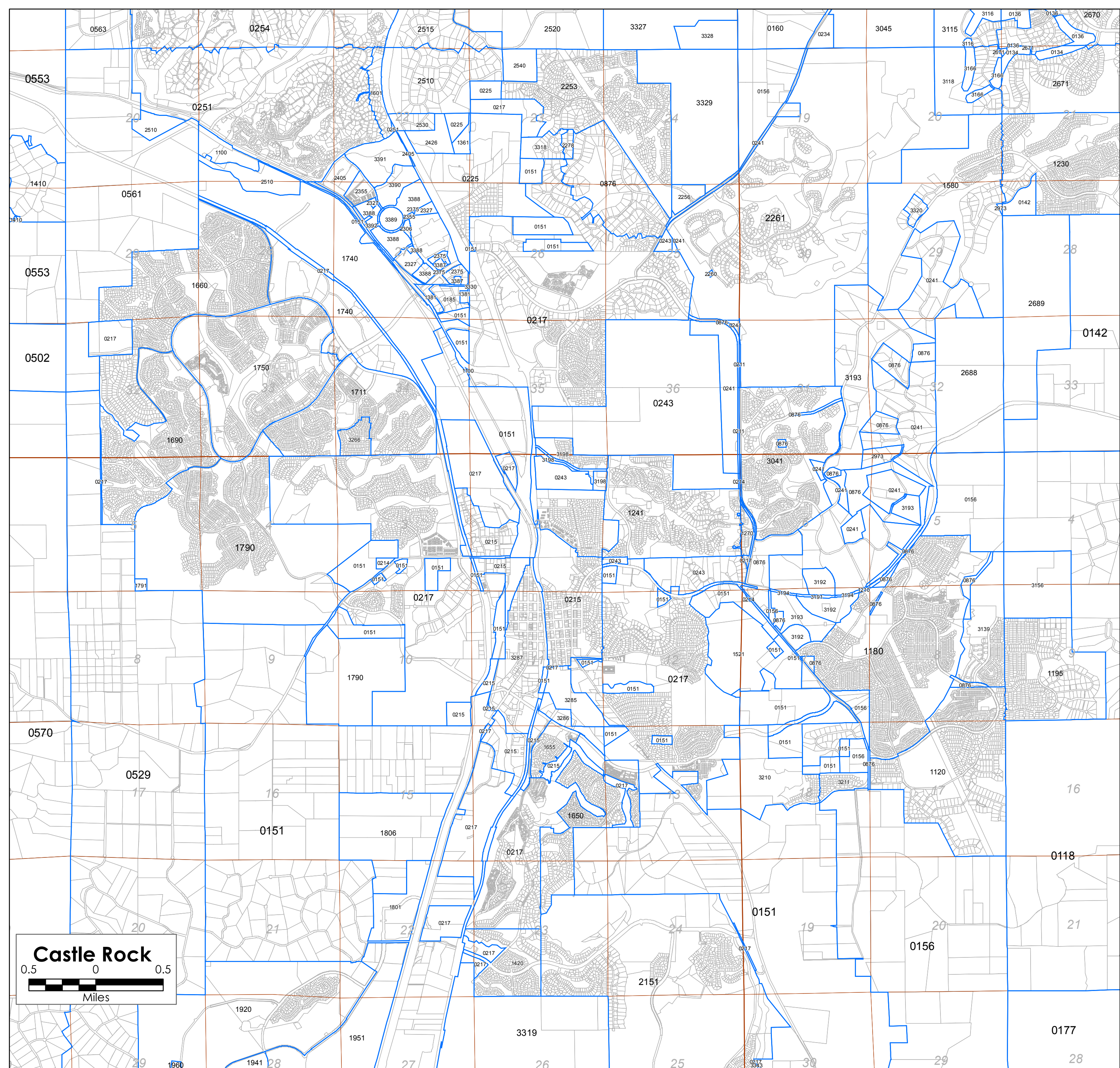
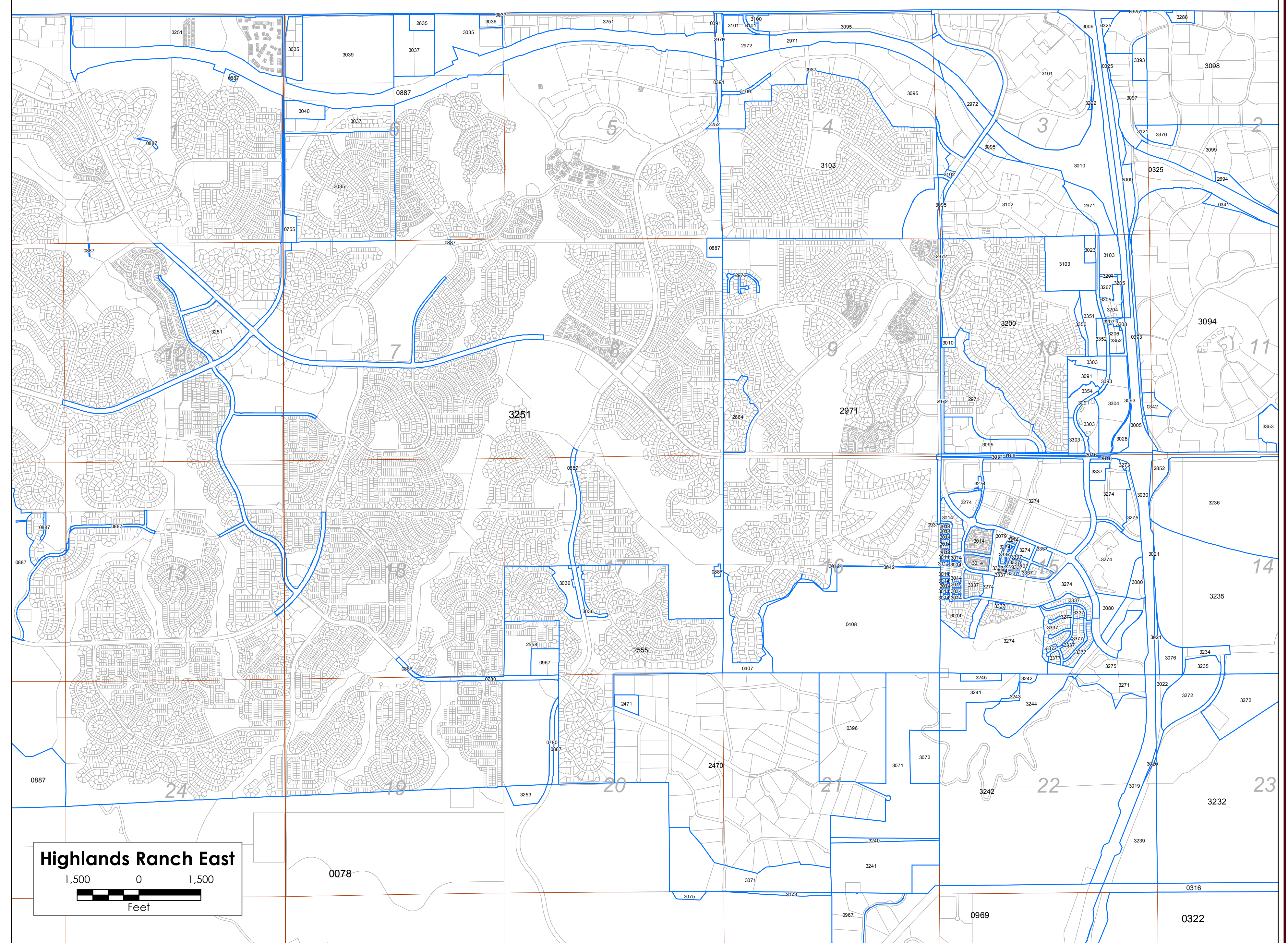


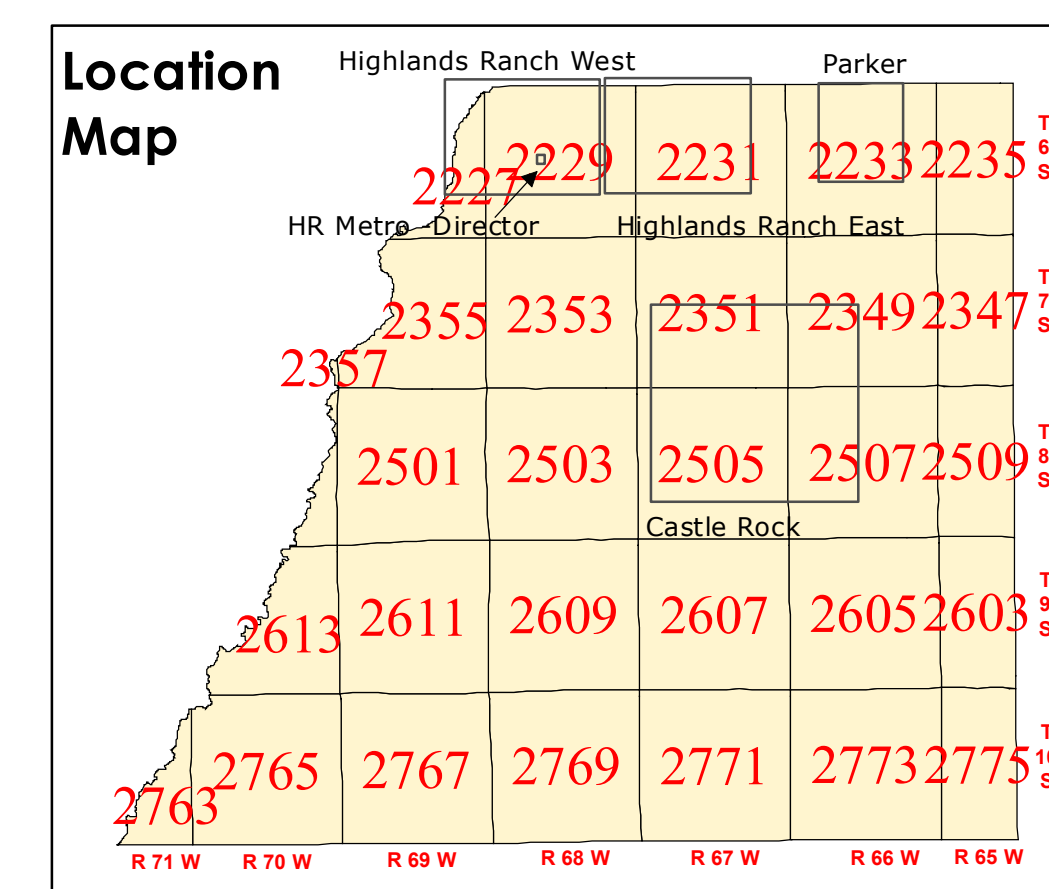
**Highlands Ranch West**  
1,500 0 1,500  
Feet



**Highlands Ranch East**  
1,500 0 1,500  
Feet



**HR Metro - Director**  
400 0 400 Feet



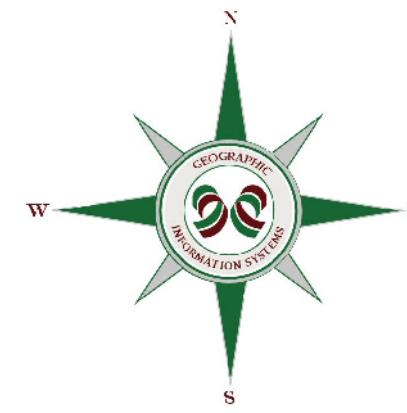
## TAX AREAS CLOSE-UP VIEWS

### Douglas County, Colorado

#### Legend

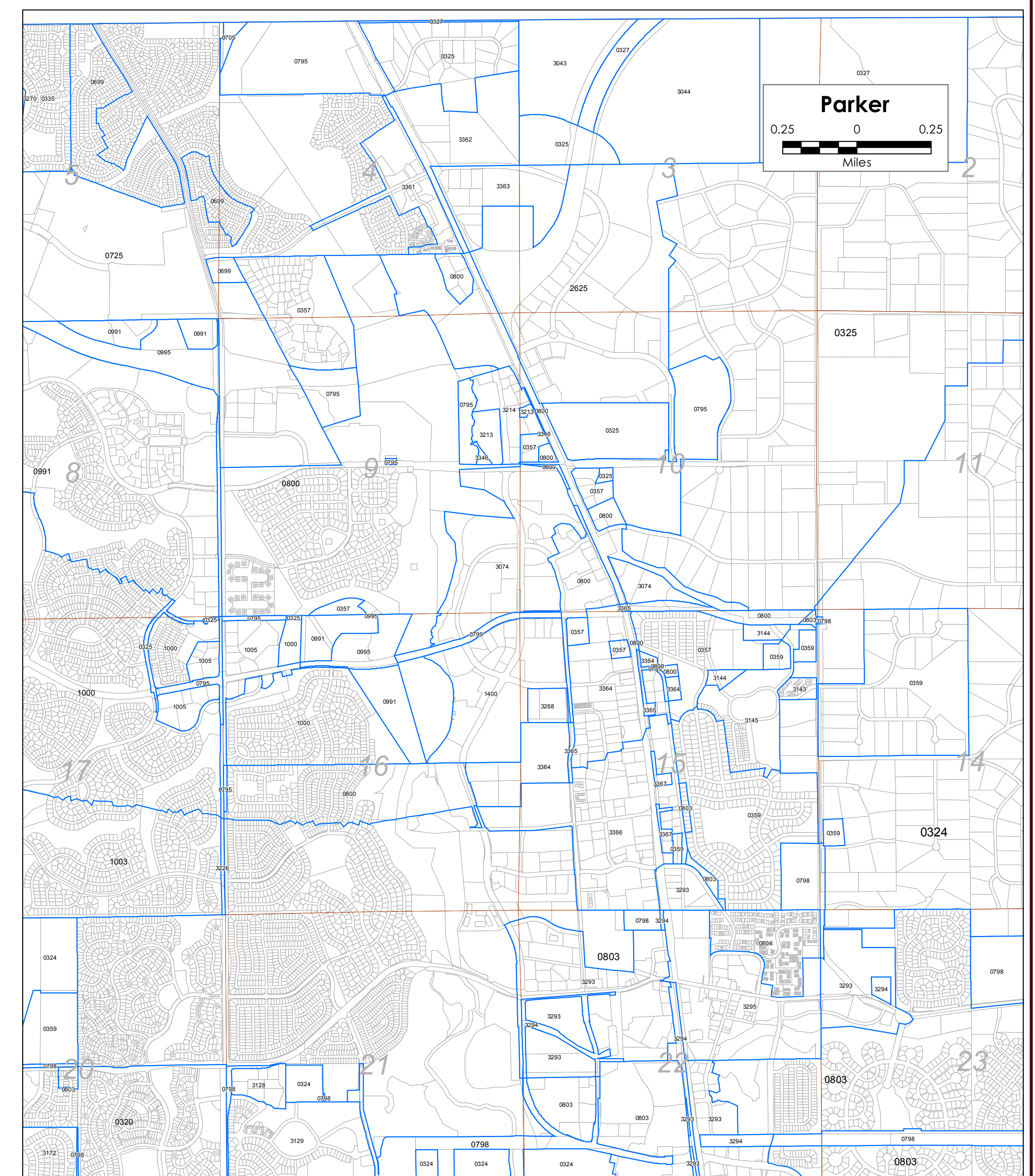
- Tax District Boundaries
- Parcels
- Townships
- Sections

**Source:**  
DISTRICT BOUNDARIES BASED UPON  
2014 ASSESSOR TAX DISTRICTS



DISCLAIMER:  
All data and information ("Products") contained herein are for informational purposes only. Although such Products are believed to be accurate as the time of printing, Douglas County does not warrant that such Products are error free. Douglas County provides these Products on an "as is" basis without warranties of title or implied warranties of merchantability or fitness for a particular purpose. Douglas County shall not be liable for any direct, indirect, incidental, special or consequential damages arising out of the use of such Products, or the inability to use such Products or any of its branches of any warranty. The user acknowledges and agrees that the use of such Products is at the sole risk of the user.

General questions about this or any other Douglas County GIS products, including errors, omissions, corrections and/or updates should be directed to the Douglas County GIS Division at (303) 690-7416.  
Douglas County GIS Division  
Philip S. Miller Bldg., 100 Third St.  
Castle Rock, Colorado 80104



**Parker**  
0.25 0 0.25  
Miles