

# R

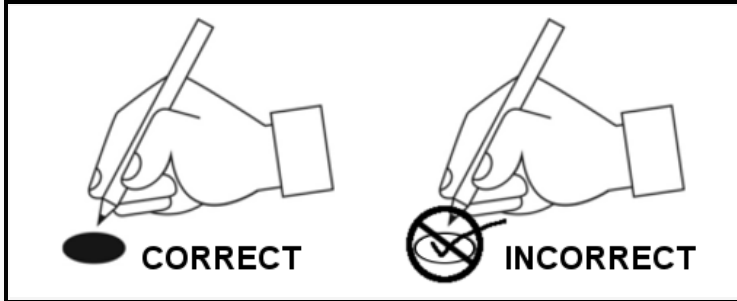
Republican

## Official Ballot for the Republican Party 2018 Primary Election Douglas County, Colorado June 26, 2018

Merlin Klotz - Clerk and Recorder

### Voter Instructions

**1** Use a black or blue pen to mark your choices on the ballot.



**2** To vote for your choice in each contest, completely fill in the oval provided to the left of your choice.

#### WARNING!

Any person who, by the use of force or other means, unduly influences an eligible elector to vote in any particular manner or to refrain from voting, or who falsely makes, alters, forges, or counterfeits any mail ballot before or after it has been cast, or who destroys, defaces, mutilates, or tampers with a ballot is subject, upon conviction, to imprisonment, or to a fine, or both.

### Federal

Candidates for Office

#### Representative to the 116th United States Congress - District 4

Ken Buck

#### Representative to the 116th United States Congress - District 6

Mike Coffman

### State

Candidates for Office

#### Governor

Vote for One

- Walker Stapleton
- Greg Lopez
- Doug Robinson
- Victor Mitchell

#### Secretary of State

Wayne Williams

#### State Treasurer

Vote for One

- Justin Everett
- Polly Lawrence
- Brian Watson

#### Attorney General

George Brauchler

#### State Board of Education Member - Congressional District 4

Debora L. Scheffel

#### Regent of the University of Colorado - At Large

Ken Montera

#### State Senator - District 30

Chris Holbert

#### State Representative - District 39

Mark Baisley

#### State Representative - District 43

Kevin Van Winkle

#### State Representative - District 44

Kim Ransom

#### State Representative - District 45

Patrick Neville

### County

Candidates for Office

#### Commissioner - District 1

Vote for One

- Diane Holbert
- Abe Laydon

#### Clerk and Recorder

Vote for One

- Merlin Klotz
- Robert Kennedy

#### Treasurer

Vote for One

- Dave Gill
- Bob Muni

#### Assessor

Lisa Frizell

#### Sheriff

Tony Spurlock

#### Surveyor

Robert D. Snodgrass

#### Coroner

Jill E. Romann

**SAMPLE**