

## Ballot Drop Box and Voting Service and Polling Center Public Comment Period November 8, 2022 General Election

The Douglas County Office of Clerk and Recorder is inviting public comment on the proposed Ballot Drop Box and Voter Service and Polling Center (VSPC) locations for use in the November 8, 2022 General Election. Residents are encouraged to offer their comments to the Office of Clerk and Recorder via email or telephone message.

- The public comment period runs from May 27 – June 11, 2022.
- Comments may be left by phone at 303-663-6279 or by email at [Elections@douglas.co.us](mailto:Elections@douglas.co.us).
- For additional information contact the Elections Office at 303-660-7444.
- Comments must include name, address, and phone number in order to be entered into the official record.

According to Colorado law, a VSPC location must meet the following criteria to be eligible for consideration:

- Available for Office of Clerk and Recorder use anywhere from 9-25 days preceding the election
- Secure computer access
- Secure internet access
- Sufficient electrical power for equipment
- Accessible for people with disabilities
- Sufficient public parking spaces
- Close proximity to public transportation lines
- A public location that typically services a significant number of people
- Geographically diverse to maximize coverage throughout the county
- Suitable restrooms for staff and voters
- Availability from 8 a.m. to 5 p.m. Monday-Friday and Saturdays, and from 7 a.m. to 7 p.m. on Election Day
- Accessible to county election staff to set up and take down equipment
- Open to other minor compliance needs to satisfy state and federal law, such as posting election notice signs and temporarily installing video surveillance equipment



Life of a Ballot



Register/Update



Election Information



Ballot Drop Boxes



Voter Services



Track Your Ballot

# VOTER SERVICE AND POLLING CENTER (VSPC) AND BALLOT DROP BOX LOCATIONS

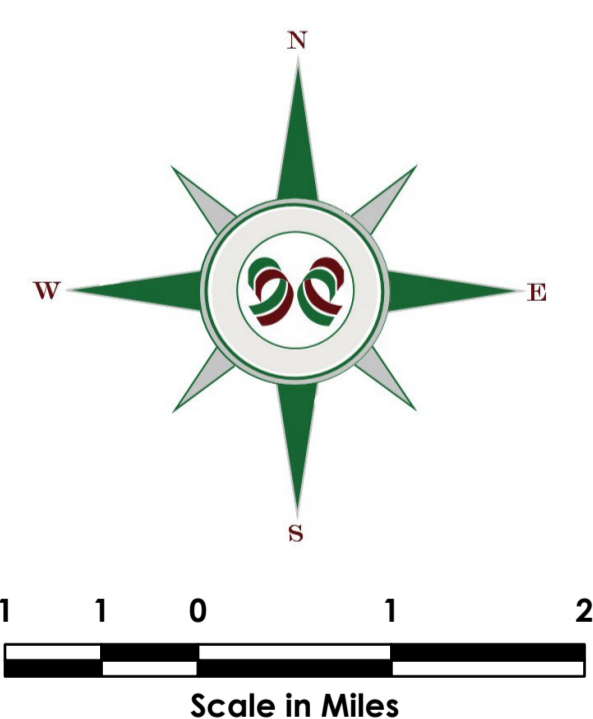
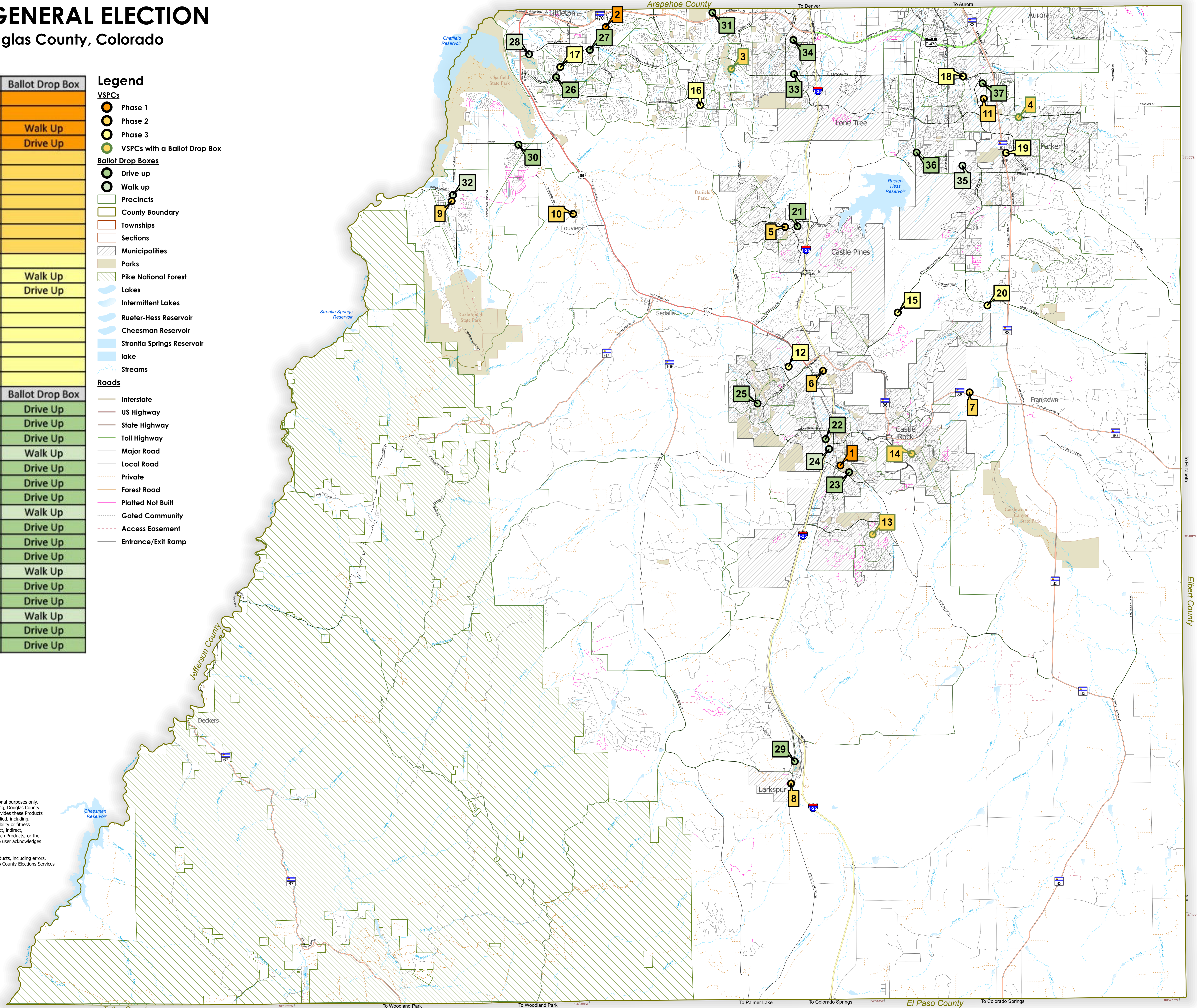
## 2022 GENERAL ELECTION

Douglas County, Colorado

Abbreviation	Flag	VSPC	Ballot Drop Box
DCKH	1	Phase 1	
HRNR	2	Phase 1	
DCPT	3	Phase 1	Walk Up
PTH	4	Phase 1	Drive Up
CPN	5	Phase 2	
DCH	6	Phase 2	
CLC	7	Phase 2	
LFD	8	Phase 2	
RXL	9	Phase 2	
LVC	10	Phase 2	
PFH	11	Phase 2	
ACCS	12	Phase 3	
CVR	13	Phase 3	Walk Up
RH	14	Phase 3	Drive Up
CCC	15	Phase 3	
HRSR	16	Phase 3	
HRWR	17	Phase 3	
PRC	18	Phase 3	
PUM	19	Phase 3	
FFD	20	Phase 3	
CPL	21		Drive Up
DCE	22		Drive Up
DCOL	23		Drive Up
DCO	24		Walk Up
GR	25		Drive Up
HRMV	26		Drive Up
HRSS	27		Drive Up
RP	28		Walk Up
LTH	29		Drive Up
SR	30		Drive Up
SSSC	31		Drive Up
RXM	32		Walk Up
LTMV	33		Drive Up
LTM	34		Drive Up
DCF	35		Walk Up
EPS	36		Drive Up
PPD	37		Drive Up

### Legend

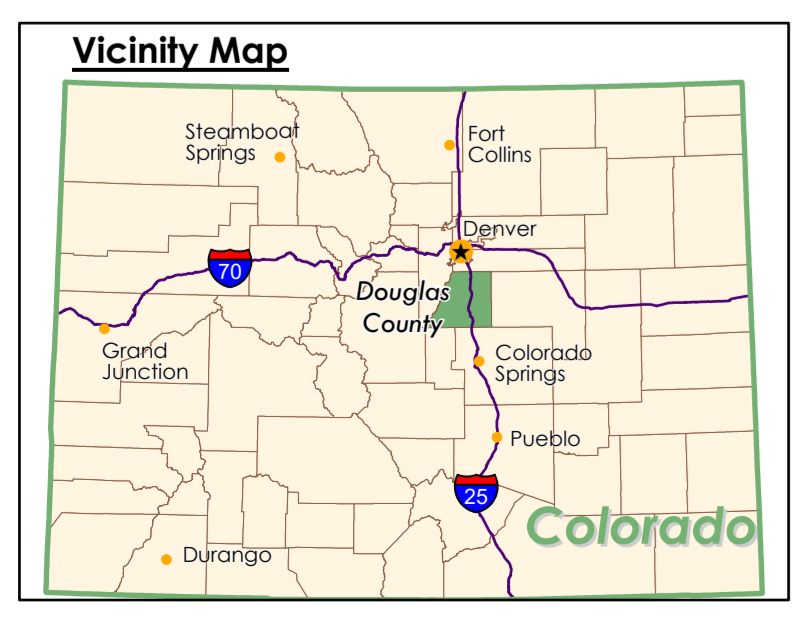
- VSPCs**
- Phase 1
  - Phase 2
  - Phase 3
  - VSPCs with a Ballot Drop Box
- Ballot Drop Boxes**
- Drive up
  - Walk up
- Other Features**
- Precincts
  - County Boundary
  - Townships
  - Sections
  - Municipalities
  - Parks
  - Pike National Forest
  - Lakes
  - Intermittent Lakes
  - Rueter-Hess Reservoir
  - Cheesman Reservoir
  - Strontia Springs Reservoir
  - lake
  - Streams
- Roads**
- Interstate
  - US Highway
  - State Highway
  - Toll Highway
  - Major Road
  - Local Road
  - Private
  - Forest Road
  - Platted Not Built
  - Gated Community
  - Access Easement
  - Entrance/Exit Ramp



**DISCLAIMER:**  
 All data and information ("Products") contained herein are for informational purposes only. Although such Products are believed to be accurate at the time of printing, Douglas County does not warrant that such Products are error free. Douglas County provides these Products on an "as is" basis without warranties of any kind, either express or implied, including, but not limited to, warranties of title or implied warranties of merchantability or fitness for a particular purpose. Douglas County shall not be liable for any direct, indirect, incidental, special or consequential damages arising out of the use of such Products, or the inability to use such Products or out of any breach of any warranty. The user acknowledges and agrees that the use of such Products is at the sole risk of the user.

General questions about this or any other Douglas County Elections products, including errors, omissions, corrections and/or updates should be directed to the Douglas County Elections Services at (303) 560-7444.

Douglas County Elections  
 125 Stephanie Place  
 Castle Rock, Colorado 80104



## 2022 General Election Voter Service and Polling Center (VSPC) & Ballot Drop Box Locations - Douglas County, Colorado

Long Form Name	Abbreviation	Flag	Address	City	VSPC	Ballot Drop Box
Douglas County Kirk Hall	DCKH	1	500 Fairgrounds Road	Castle Rock	Phase 1	
Northridge Recreation Center	HRNR	2	8800 S. Broadway	Highlands Ranch	Phase 1	
Douglas County Parks and Trails Division	DCPT	3	9651 S. Quebec Street	Highlands Ranch	Phase 1	Walk Up
Parker Town Hall	PTH	4	20120 E. Mainstreet	Parker	Phase 1	Drive Up
Castle Pines North Metro District	CPN	5	7404 Yorkshire Drive	Castle Pines	Phase 2	
Douglas County Human Services	DCH	6	4400 Castleton Court	Castle Rock	Phase 2	
ChristLife Community Church	CLC	7	5451 E. Highway 86	Franktown	Phase 2	
Larkspur Fire Department	LFD	8	9414 Spruce Mountain Road	Larkspur	Phase 2	
Roxborough Library	RXL	9	8357 N. Rampart Range Road Suite #200	Littleton	Phase 2	
Louviers Village Clubhouse	LVC	10	7885 Louviers Boulevard	Louviers	Phase 2	
Parker Fieldhouse	PFH	11	18700 E. Plaza Drive	Parker	Phase 2	
Arapahoe Community College Sturm Campus	ACCS	12	4500 Lighthouse Avenue	Castle Rock	Phase 3	
Crystal Valley Ranch Recreation Center	CVR	13	2160 Fox Haven Drive	Castle Rock	Phase 3	Walk Up
The Ridge House	RH	14	4501 Enderud Boulevard	Castle Rock	Phase 3	Drive Up
Canyons Community Church	CCC	15	4825 Crowfoot Valley Road	Castle Rock	Phase 3	
Southridge Recreation Center	HRSR	16	4800 McArthur Ranch Road	Highlands Ranch	Phase 3	
Westridge Recreation Center	HRWR	17	9650 Foothills Canyon Boulevard	Littleton	Phase 3	
Parker Recreation Center	PRC	18	17301 Lincoln Avenue	Parker	Phase 3	
Parker United Methodist Church	PUM	19	11805 S. Pine Drive	Parker	Phase 3	
Franktown Fire Department Station 184	FFD	20	6120 Bridle Path Lane	Parker	Phase 3	
Long Form Name	Abbreviation	Flag	Address	City	VSPC	Ballot Drop Box
Castle Pines Library	CPL	21	360 Village Square Lane	Castle Pines		Drive Up
Douglas County Elections Office	DCE	22	125 Stephanie Place	Castle Rock		Drive Up
Douglas County Off-Leash Area	DCOL	23	1100 Plum Creek Parkway	Castle Rock		Drive Up
Douglas County Office Building	DCO	24	100 Third Street	Castle Rock		Walk Up
The Grange	GR	25	3692 Meadows Boulevard	Castle Rock		Drive Up
Highlands Ranch Motor Vehicle	HRMV	26	2223 Wildcat Reserve Parkway	Highlands Ranch		Drive Up
Highlands Ranch Sheriff Substation	HRSS	27	9250 Zotos Drive	Highlands Ranch		Drive Up
Redstone Park Service Center	RP	28	3280 Redstone Park Circle	Highlands Ranch		Walk Up
Larkspur Town Hall	LTH	29	8720 Spruce Mountain Road	Larkspur		Drive Up
Sterling Ranch Civic Center	SR	30	8155 Piney River Avenue	Littleton		Drive Up
South Suburban Sports Complex	SSSC	31	4810 E. County Line Road	Littleton		Drive Up
Roxborough Marketplace	RXM	32	8357 N. Rampart Range Road	Littleton		Walk Up
Lone Tree Motor Vehicle	LTMV	33	Park Meadows Center, 9350 Heritage Hills Circle	Lone Tree		Drive Up
Lone Tree Municipal Building	LTM	34	9220 Kimmer Drive	Lone Tree		Drive Up
Douglas County Facilities Building	DCF	35	9040 Tammy Lane	Parker		Walk Up
EchoPark Stadium	EPS	36	11901 Newlin Gulch Boulevard	Parker		Drive Up
Parker Police Department	PPD	37	18600 Lincoln Meadows Parkway	Parker		Drive Up