



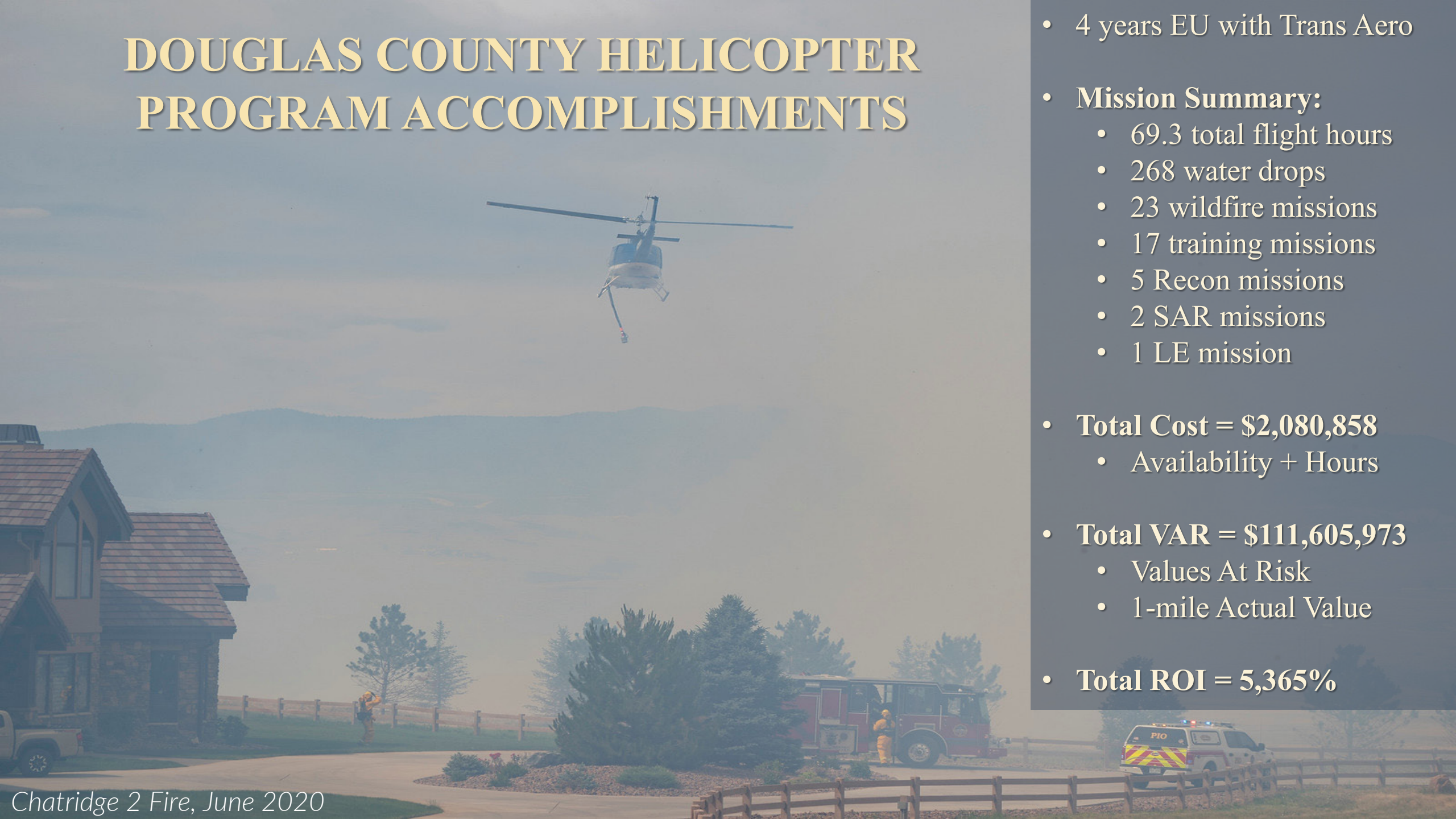
DOUGLAS COUNTY WILDFIRE AVIATION
HARD, HEAVY, FAST



DOUGLAS COUNTY EMERGENCY SERVICES



DOUGLAS COUNTY HELICOPTER PROGRAM ACCOMPLISHMENTS



- 4 years EU with Trans Aero
- **Mission Summary:**
 - 69.3 total flight hours
 - 268 water drops
 - 23 wildfire missions
 - 17 training missions
 - 5 Recon missions
 - 2 SAR missions
 - 1 LE mission
- **Total Cost = \$2,080,858**
 - Availability + Hours
- **Total VAR = \$111,605,973**
 - Values At Risk
 - 1-mile Actual Value
- **Total ROI = 5,365%**

DOUGLAS COUNTY HELICOPTER PROGRAM – 2022 AND BEYOND



- Annual EU Contract with Trans Aero LTD, 153 Days (June 1 – October 31) plus 10 hours/month flight training
- Type 2 Helicopter with fixed belly tank and snorkel, 300-gallon water capacity, 7 passenger capability
- Dedicated Emergency Services staff for helicopter management, mission coordination and operational safety
- Annual cost for helicopter contract and training hours = approximately \$1,044,600

DOUGLAS COUNTY HELICOPTER PROGRAM – 2022 AND BEYOND



- The weakest link in our Helicopter Program is staffing
- We currently operate with bare minimum staffing (2 staff/day, 7 days/week)
- We currently risk the helicopter being unavailable for fire response due to lack of management
- *Two additional FTE* would provide enough staff redundancy to provide reasonable assurance of availability

DOUGLAS COUNTY HELICOPTER PROGRAM – 2022 AND BEYOND



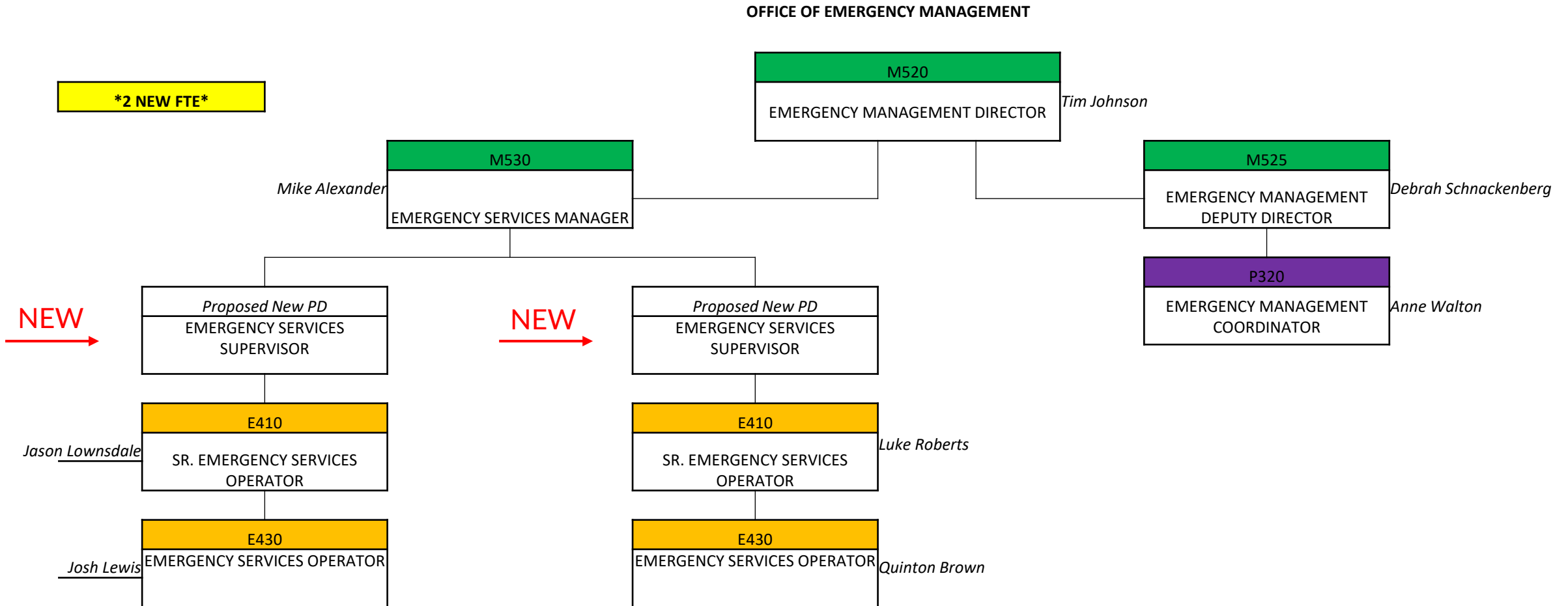
- ESU staff work 4/10 shifts (Sun-Wed and Wed-Sat) with 2 staff/shift in order to provide 7-day coverage
- Interagency Helitack standards for this type of aircraft call for 4 staff per shift minimum
- Firefighting helicopters cannot function without helicopter managers, and we currently risk the county's most valuable firefighting asset being unavailable in our greatest time of need due to lack of people
- All 4 ESU staff are currently working on interagency helitack qualifications to meet national standards and best practices for aerial firefighting operations

DOUGLAS COUNTY HELICOPTER PROGRAM – 2022 AND BEYOND



- ESU staff are committed to aviation operations and initial attack fire suppression during periods of high fire danger and Exclusive Use helicopter contracts
- Outside of those times, ESU staff implement wildfire mitigation on county properties and open space
- ESU staff also assist partner agencies with prescribed fire projects and respond to all-hazard disasters throughout Douglas County and mutual aid jurisdictions
- Members of ESU also contribute to county snowplow operations as needed

Proposed New OEM/ESU Org Chart with Two New FTE





Two additional FTE for the Emergency Services Unit will help stabilize the Douglas County Helicopter Program and ensure our continued success