



**Douglas County, Colorado
Americans with Disabilities Act (ADA)
Transition Plan for Public Right-of-Way**

Douglas County Department of Public Works Engineering
100 Third Street
Castle Rock, CO 80104

*Approved by the Board of County Commissioners on April 9, 2019
Resolution No. R-019-044*

Table of Contents

Transition Plan

- I. Introduction and Project Background
- II. ADA Coordinator Role and Responsibilities
- III. Self-Evaluation
- IV. Public Involvement
- V. Public Information Sharing and Grievance Procedure
- VI. Design Standards and Specifications
- VII. Prioritize and Identify Goals, Strategies, and Schedules
- VIII. Monitoring and Updating Plan

Appendices

- A. Definitions
- B. County Policy Regarding the Requests by Public for Auxiliary Aids (ADA Compliance)
- C. ADA Coordinator Contact Information
- D. Inventory of Public Facilities Assessed
- E. Overview of Assessment Attributes / Parameters
- F. Assessment Findings
- G. Public Involvement Documentation
- H. Complaint and Grievance Procedures
- I. ADA Design and Construction Exception Form

I. Introduction and Project Background

The purpose of this Transition Plan is to identify facilities, guidelines, standards, policies, procedures, and/or practices currently utilized or recommended for use to minimize or eliminate barriers to accessibility within unincorporated Douglas County's transportation network. The transportation network is defined as all County-owned and maintained roadways, sidewalks, on-system shared-use trails, curb ramps, bridges, and other pathways designated for public transportation within the unincorporated limits and right-of-way. The Transition Plan is a living document to be reviewed and updated periodically. Douglas County has made a significant and long-term commitment to improving the accessibility of pedestrian facilities within the transportation network.

The Americans with Disabilities Act (ADA), enacted on July 26, 1990, is a civil rights law prohibiting discrimination against individuals on the basis of disability. The ADA consists of five titles outlining protections in the following areas:

- Employment
- State and local government services
- Public accommodations
- Telecommunications
- Miscellaneous Provisions

Title II of ADA pertains to the programs, activities and services public entities provide. Douglas County must comply with this section of the ADA as it specifically applies to public service agencies. The ADA requires the Transition Plan be submitted for public review before final approval and adoption.

As required by Title II of ADA, 28 CFR, Part 35 Sec. 35.105 and Sec. 35.150(d), Douglas County has conducted a self-evaluation of its facilities within the public right-of-way and is developing a Transition Plan to outline how reasonable accessibility improvements for individuals, when needed, will be addressed. This Plan includes the findings of the self-evaluation and addresses areas of potential improvement as they pertain to the County's transportation network.

With the adoption of the ADA in 1990, Douglas County incorporated accessibility standards into all new design and construction projects. Furthermore, Douglas County has promoted the incorporation of sidewalks, curb ramps and other pedestrian-friendly facilities into their development standards for new subdivisions. Periodic inspection and upgrades of the facilities in place are completed as funds are available.

II. ADA Coordinator Role & Responsibilities

The ADA requires public entities with fifty (50) or more employees to designate one or more individuals as responsible employees for monitoring compliance with and investigating potential violations of the ADA. This individual(s) is the primary point of contact for individuals with disabilities to:

1. Request auxiliary aids and services, policy modifications, and other accommodations;
2. Address ADA concerns from the general public and from other departments and employees of the public entity; and/or
3. File a complaint with the County regarding accessibility to County programs, activities and services.

Appendix C identifies the office, address, and telephone number of the ADA Coordinator(s) for unincorporated Douglas County.

III. Self-Evaluation

Douglas County is required, under Title II of the ADA and 28 CFR 35.105(a), to perform a self-evaluation of all its policies, practices and programs, and current facilities, including infrastructure in the public right-of-way. This self-evaluation will identify what policies and practices impact accessibility and examine how the County implements these policies.

The Transition Plan is intended to address accessibility adjacent to or crossing roadways and bridges and accessibility on facilities designated for shared-use or non-vehicular public transportation. The transportation network does not include facilities maintained by or owned by other agencies or private entities within the jurisdictional boundaries of the County.

In 2017, Douglas County conducted a comprehensive self-evaluation consisting of physical review and assessment of curb ramps located within the unincorporated areas of the County and documented the following:

- Curb ramp presence, configuration, geometry, grades, and condition
- Detectable warning surfaces presence, geometry*, contrast, and condition
- Clear space presence beyond the bottom grade break and wholly outside the parallel vehicle traffic lane
- Turning space presence, configuration, geometry, grades, and condition

This self-evaluation is based on the 2011 Proposed Guidelines for Pedestrian Facilities in the Public Right-of-Way (PROWAG) published by the United States Access Board. The PROWAG document has not been adopted or approved. PROWAG is recognized as a best practice and has been recommended for use by the Federal Highway Administration (FHWA). Compliance or non-compliance as noted herein, is in reference to PROWAG, assuming it is the standard by which accessibility should be measured.

Douglas County has a step by step process of how different aspects of accessibility within the County's transportation network are measured and captured. To be compliant under PROWAG, these features must satisfy established criteria specific to each asset type and purpose. If one criteria of an asset is non-compliant, the asset technically does not meet accessibility requirements even though it may be substantially compliant. Appendix D, E, and F provide information related to the assets surveyed, assessment attributes / parameters, and summary of findings.

This assessment information has been added to the County's GIS database for easy reference and query for internal staff.

**Detectable warning surfaces were not a requirement between 1994 – 2001, and ramps constructed during that period without detectable warning surfaces are considered compliant until the alterations threshold is met.*

IV. Public Involvement Used in Transition Plan Development

Douglas County recognizes that public outreach participation is an important component to gain input on and help identify particular existing areas of concern. Public outreach and user surveys provided opportunities for individuals to comment on this Transition Plan, which include:

- Notification sent to 75 unincorporated Douglas County neighborhoods via Nextdoor seeking on-line survey engagement. Three thank you comments received and 7,184 citizens read the notice
- Press Release to All Area Media distributed seeking on-line survey engagement
- Notification printed in the Douglas County News Press seeking public engagement: on-line survey and public Open House
- Document and user survey made available on Douglas County's website
- Document and user survey made available during several Open House public meetings in conjunction with the update of the 2040 Transportation Master Plan
- Public Open House on November 27, 2018, specifically for survey engagement
- Public Open House on January 30, 2019, specifically for Transition Plan feedback

The County published a legal notice in the Douglas County News Press starting on January 17, 2019, announcing the availability of the Transition Plan draft on the Douglas County Website and at the local public library with easy public access. The notice also provided instructions regarding the timetable for comments and where to send them. Public comments were accepted for a period of no less than 30 days, ending February 15, 2019. The primary means of soliciting input for the Plan occurred using a public survey. Appendix G contains a copy of the survey materials and responses received.

Formal adoption of the Transition Plan will take place in March, 2019. It will be available on the Douglas County website and by written formal request to the ADA Coordinator.

V. Public Information Sharing & Grievance Procedure

Douglas County will make available to all applicants, participants, beneficiaries, and interested persons information regarding the provisions of the ADA and its applicability to the services, programs or activities of the County.

Douglas County is committed to sharing information with the public regarding efforts to improve accessibility within the County's jurisdiction. Information sharing occurs through contact with the ADA Coordinator, the County's webpage on ADA Compliance located at <http://www.douglas.co.us/ada-transition-plan-public-row/>, public meetings, press releases and other public notifications; and other typical methodologies used by the County and the County's Public Information Office.

Appendix B identifies the process for requesting auxiliary aids and/or alternative communication resources at public meetings.

Appendix H identifies complaints and grievances procedures and responsibilities towards filing, investigating, and initiating a response.

VI. Design Standards & Specifications

The ADA Standards and Specifications described in this section are intended to apply to all construction within unincorporated Douglas County public right-of-way required to adhere to County requirements.

The County maintains standard details and construction specifications for transportation assets intended to provide accessibility within the transportation network. The County standards are available at:

<http://www.douglas.co.us/land/regulations-and-procedures/roadway-design-construction-standards/>

For assets constructed not specifically addressed by those details and specifications, the County typically utilizes Colorado Department of Transportation requirements. CDOT standards are available at:

<https://www.codot.gov/business/designsupport/standard-plans>

In an effort to account for construction tolerances and to avoid exceeding listed thresholds, designers and construction crews shall use specified slopes and dimensions as stated in these standards while maintaining positive drainage.

In alterations to existing facilities, where compliance with applicable standards and specifications is technically infeasible or result in undue burden, the alteration shall conform to standards to the maximum extent possible.

Such exceptions shall be documented on the ADA Design and Construction Exception Form contained in Appendix I and submitted to the ADA Coordinator/Department of Public Works Engineering for documentation.

VII. Prioritize and Identify Goals, Strategies, and Schedules

The overall goal of the Transition Plan is to improve accessibility for all users within unincorporated Douglas County transportation network. In order to achieve this goal, the County prioritizes the list of identified barriers, identifies strategies and methods to be used to remove barriers achievable within fiscal constraints, provides guidance to County staff and the public on the requirements of the ADA and the County's approach to improve accessibility, develops a realistic schedule based on available budget for the removal of barriers, and identifies potential funding sources and opportunities to remove barriers.

When determining the manner and options for providing accessibility, the County considers many factors including the volume of pedestrian traffic, population density, and the roadway average daily vehicle traffic volume. Considering these factors along with funding appropriation, the County anticipates using the following criteria to assist in prioritizing implementation of accessibility improvements as funds become available (in order of priority):

1. Locations identified from the grievance process will be investigated, addressed and prioritized on a case-by-case basis.
2. Locations where adjacent roadway or infrastructure improvements are taking place
3. Locations in close proximity to public facilities and high pedestrian traffic areas such as schools, hospitals, recreation facilities, parks, etc.
4. Locations having a higher degree of non-compliance or more significant barriers to accessibility
5. All other locations not listed above as funding and resources are available.

When necessary, out-of-direction travel may be utilized to provide an accessible path, for short or long periods of time until a more direct accessible path can be provided.

In general, accessibility improvements along the transportation network addressing curb ramps and sidewalks occur as part of contracted and self-performed construction projects.

It is anticipated the majority of the accessibility improvements will be performed in conjunction with other projects occurring within the County. The following illustrates the different types of projects and how each may improve accessibility:

New Construction Projects: Work involving construction of new pedestrian or transportation features shall provide accessible features in the project that meet current ADA design standards.

Improvements Projects: Work involving improving existing public Right-of-Way transportation features will provide new or necessary upgrades to existing accessible features in the project area to meet current ADA design standards. Such projects may

include road widening Capital Improvement Projects with associated sidewalk improvements.

Major Maintenance and Rehabilitation Projects: Work involving any alteration or major maintenance activity performed on transportation assets in the existing public Right-of-Way shall provide or upgrade accessible features in, or immediately adjacent to, the project to meet current ADA design standards. Such projects shall include any project requiring pavement reconstruction, major pavement rehabilitation, sidewalk improvements, or the reconstruction of accessibility facilities. Minor or routine maintenance activities (patching, sealing, etc.) will include accessibility improvements when required by the ADA or when such improvements are consistent with the scope of the activity being performed.

Routine Maintenance Projects: Work that is limited to specifically repairing spot areas in the public Right-of-Way directly affecting accessibility shall provide new or necessary upgrades to impacted existing accessible features to meet current ADA design standards.

Training & Education Projects: The County may provide training to staff, contractors, engineers, developers, partners, and the general public as deemed appropriate for the purpose of educating and training individuals and entities on ADA requirements, construction standards and processes, and County expectations for projects within the transportation network.

The following outlines the anticipated process for addressing accessibility barriers within the County's transportation network:

Coordinated/Included with another Project(s):

1. Annually review planned projects and compare project locations to locations of known accessibility issues.
2. Review project areas to identify or confirm and quantify accessibility barriers.
3. Identify available funding to allocate towards accessibility improvements.
4. Develop necessary Contract Document changes to incorporate proposed improvements into the overall project.
5. Inspect constructed improvements and document resolution of accessibility barrier(s).

Standalone Project(s):

1. Review documented accessibility barriers and identify locations without undue burdens to target, consistent with the Plan priorities, construction economics and other environmental factors, and available funding.
2. Identify available funding to allocate towards accessibility improvements.
3. Inspect constructed improvements and document resolution of accessibility barrier(s).

Years prior to initiating the formal development of the Transition Plan, the County commenced efforts to improve accessibility. These efforts are ongoing and will be re-focused as needed to maintain consistency with the vision of the Transition Plan.

This Transition Plan will base programming costs of the different project components based upon an Engineer's Estimate of Probable Costs on a per each or linear foot basis. These programming costs should include an allowance for different elements typically associated with the specific improvements. Examples of these components include additional adjacent sidewalk or curb and gutter required to construct curb ramp, retaining walls, landscaping, pavement patching, and Right-of-Way. This estimated programming cost should also include contingencies for design and construction engineering and surveying. Because of the unknown nature of future capital improvement projects and budgets, private development and re-development, federal grants, and general operating budgets; the County cannot accurately predict available future annual spending towards improving accessibility.

VIII. Monitoring & Updating Plan

The Transition Plan will be reviewed and revised on a periodic basis. The Transition Plan will be updated as the law requires to improve accessibility in Douglas County. The ADA Coordinator will work with County Departments and staff during the periodic Plan review to identify updates and incorporate new information pertaining to accessibility and the ADA. Public comments and suggestions received will be incorporated as deemed appropriate.

Amendments to this Plan will be necessary as it is intended to be a living document. Periodically, there will be amendments to this Plan associated with inventory of infrastructure, assessment findings and numerous other appendices within the Plan. There may also be the need to amend the Plan based on changes to Federal or State ADA standards. Such amendments to the Plan may be approved by the Public Works Engineering Director if they do not result in a change to County standards or budget appropriations.

APPENDICES

APPENDIX A – DEFINITIONS

ADA – Americans with Disabilities Act as contained and explained in Title 42, Chapter 126 of the United States Code.

ADAAG – Americans with Disabilities Act Accessibility Guidelines, codified at Appendix A to 28 Code of Federal Regulations Part 36 and at Appendix A to 49 Code of Federal Regulations part 37.

Auxiliary Aids and Services – services and devices promoting effective communication or allowing access to goods and services as defined by Titles II and III of the ADA.

Barriers – obstacles in natural or manmade environments that prevent or block mobility (moving around in the environment) or access.

Curb Ramp – A ramp that cuts through or is built up to the curb. Curb ramps can be perpendicular or parallel, or a combination of parallel and perpendicular ramps.

Detectable Warning Surfaces – truncated domes, typically pre-fabricated and installed or stamped into a walkway, providing a tactile surface at the transition from a curb and the street or other hazardous vehicular crossings, assisting pedestrians with vision disabilities in determining when they enter the street.

Pedestrian Access Route – A continuous and unobstructed path of travel provided for pedestrians with disabilities within or coinciding with a pedestrian circulation path.

PROWAG – Proposed Guidelines for Pedestrian Facilities in the Public Right-of-Way. At the time of this Initial Plan, the most current version of the PROWAG is the 2011 Proposed Guidelines for Pedestrian Facilities in the Public Right-of-Way published by the United States Access Board.

Reasonable Accommodation – changes or adjustments providing, without undue burden, means for an individual with a disability to perform the duties or tasks required. Where existing physical constraints make it impractical for altered elements, spaces, or facilities to fully comply with new construction requirements, compliance is required to the extent practicable within the scope of the project. Existing physical constraints include, but are not limited to, underlying terrain, right-of-way availability, underground structures, adjacent developed facilities, drainage, or the presence of a notable natural or historic feature.

APPENDIX B – COUNTY POLICY REGARDING THE REQUESTS BY PUBLIC FOR AUXILIARY AIDS (ADA COMPLIANCE)



DOUGLAS COUNTY
ADMINISTRATIVE POLICIES AND PROCEDURES

TITLE Requests By Public For Auxiliary Aids (ADA Compliance)	Approval Date 6/24/96
POLICY CUSTODIAN County Manager	Revision Date 4/22/03

PURPOSE: To provide auxiliary aids and services when they are necessary to ensure effective communication with individuals with hearing, vision, or speech impairments as required by Title II of the Americans with Disabilities Act of 1990, 42 U.S.C. §12131, et seq., specifically 28 C.F.R. Part 35, Subpart E, Section 35.160 (a), Communications, and Section 504 of the Rehabilitation Act of 1973, as amended, 29 U.S.C. § 794, et seq., and its implementing regulation, 45 C.F.R. Part 84.

DEPARTMENT RESPONSIBLE: County Manager

DEPARTMENT(S) AFFECTED: ALL

POLICY:

It is the policy of Douglas County to comply with Title II of the Americans with Disabilities Act of 1990, 42 U.S.C. §12131, et seq., specifically 28 C.F.R. Part 35, Subpart E, Section 35.160 (a), Communications, and Section 504 of the Rehabilitation Act of 1973, as amended, 29 U.S.C. § 794, et seq., and its implementing regulation, 45 C.F.R. Part 84, which require public entities and recipients of Federal financial assistance to take appropriate steps as may be necessary to ensure that communications with applicants, participants, and members of the public with disabilities are as effective as communications with any other person.

A public entity/recipient must furnish appropriate auxiliary aids and services where necessary to afford an individual with a disability an equal opportunity to participate in, and enjoy the benefits of a service, program, or activity conducted by a public entity/recipient.

Auxiliary aids and services include, but are not limited to, qualified interpreters, note takers, written materials, qualified readers, taped texts, large print materials, telecommunications relay service, or other effective methods making aurally and/or visually delivered materials available to individuals with hearing and/or visual impairments. 28 C.F.R. Part 35, Subpart A, Section 35.104, Definitions.

PROCEDURES:

Any person in need of auxiliary aids or services should request such aids or services directly from the County department that provides the service, program or activity in which the

person seeks to participate. When a reasonable request for an auxiliary aid is made, the request should be granted without any unreasonable delay in the receipt of services. When practicable, front line staff should assist in obtaining auxiliary aids. Otherwise, the County employee will contact the ADA/Section 504 Coordinator regarding obtaining the requested auxiliary aid. In situations where auxiliary aids and services may be used to ensure appropriate and effective communication, primary consideration should be given to the type of aid preferred by the person making the request.

The department providing the auxiliary aid or service is not required to take any action that would present an undue burden (significant difficulty or expense), an action that would fundamentally alter the service, program, or activity, or an action that would create significant administrative burdens. The decision not to provide a particular requested auxiliary aid or service does not necessarily mean the department is in violation of the ADA, Section 504, or this policy. If the provision of a particular requested auxiliary aid creates an undue burden, the department should provide an alternate auxiliary aid that will ensure, to the maximum extent possible, that the person making the request is provided the opportunity to effectively communicate.

Individual County departments will be responsible for designating an ADA/Section 504 Coordinator to facilitate a notification process to inform the general public how to request any appropriate and necessary auxiliary aids or services.

APPENDIX C – ADA COORDINATOR CONTACT INFORMATION

Douglas County ADA Coordinator

Janet Herman, Director of Public Works Engineering

100 Third Street
Castle Rock, CO 80104

Phone: 303.660.7490

Fax: 303.379.4198

engineering@douglas.co.us

Hours

Monday - Friday

8:00 a.m. – 5:00 p.m.

(Excluding County holidays)

OR

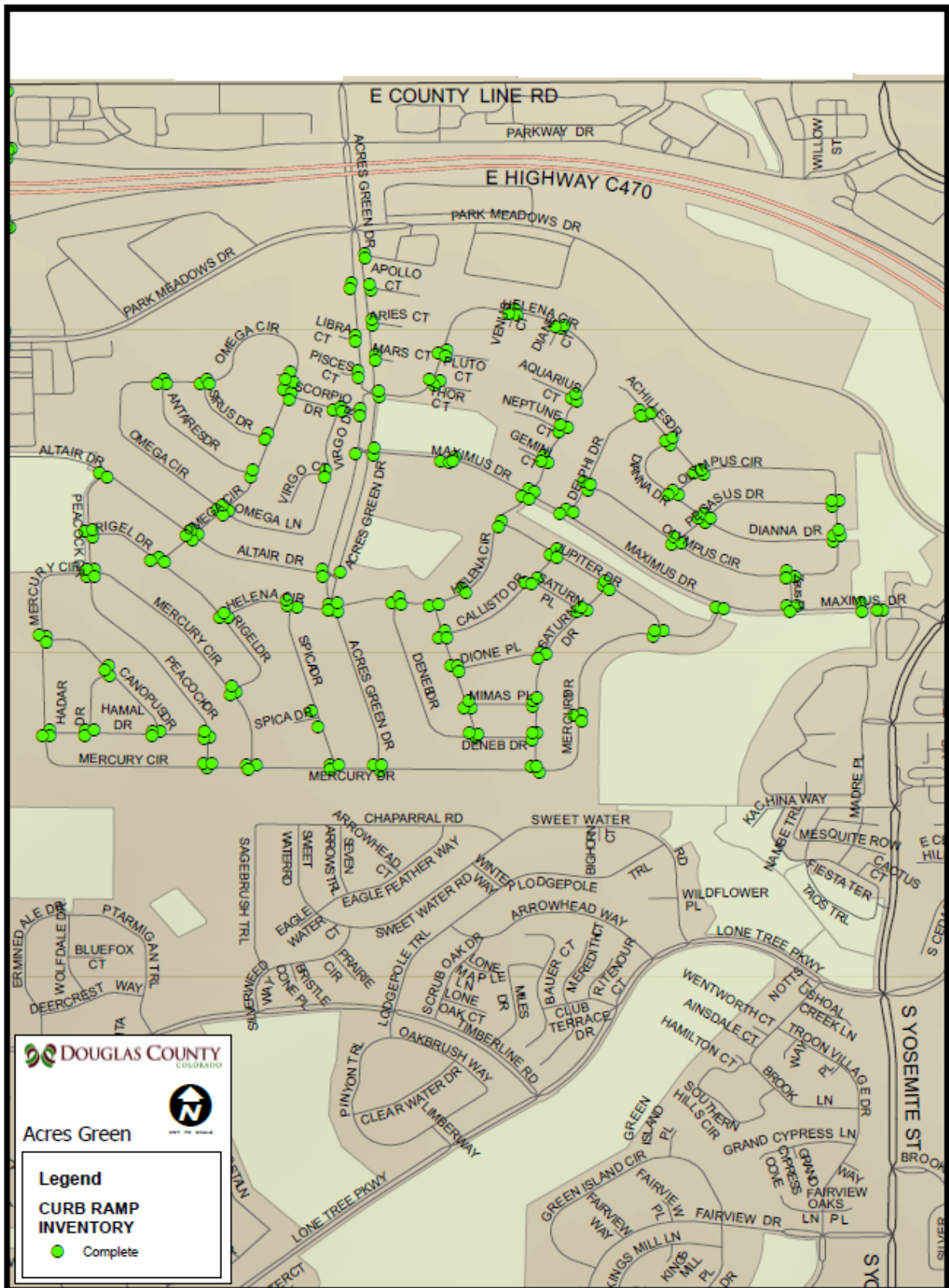
Holly Carrell, ADA Coordinator Liaison

100 Third Street
Castle Rock, CO 80104

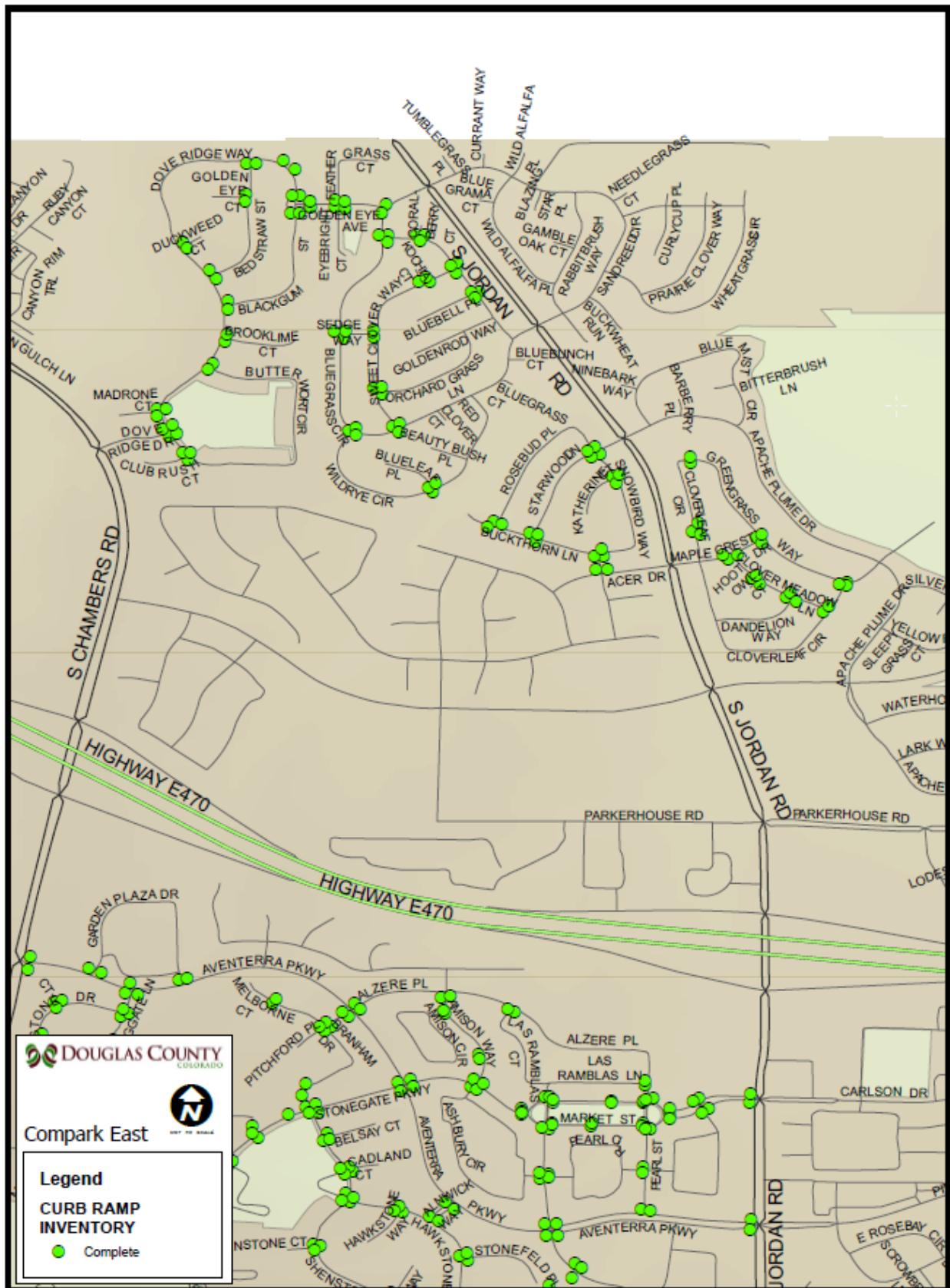
Phone: 303.660.7401

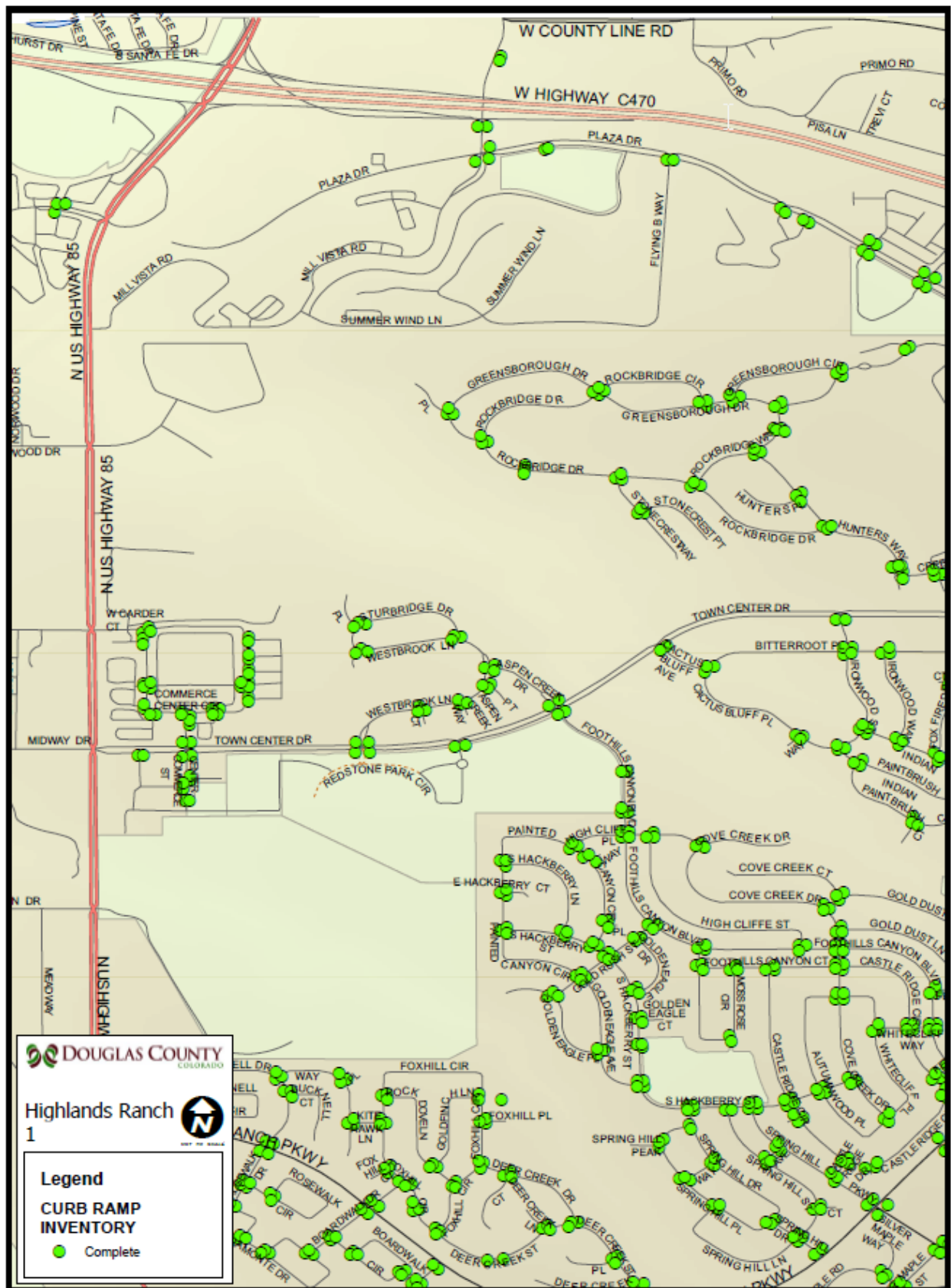
ADAcordinator@douglas.co.us

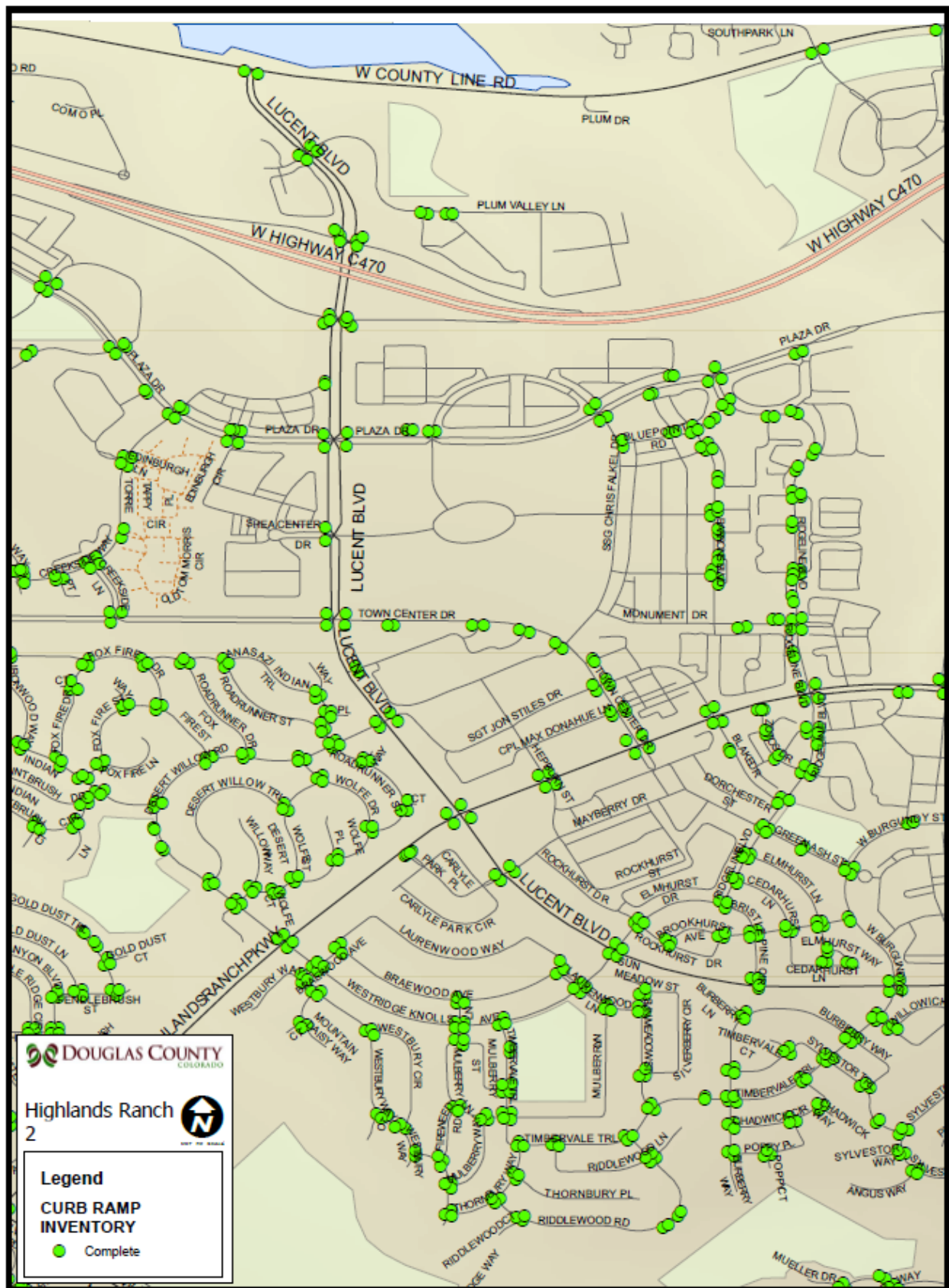
APPENDIX D – INVENTORY OF PUBLIC FACILITIES ASSESSED



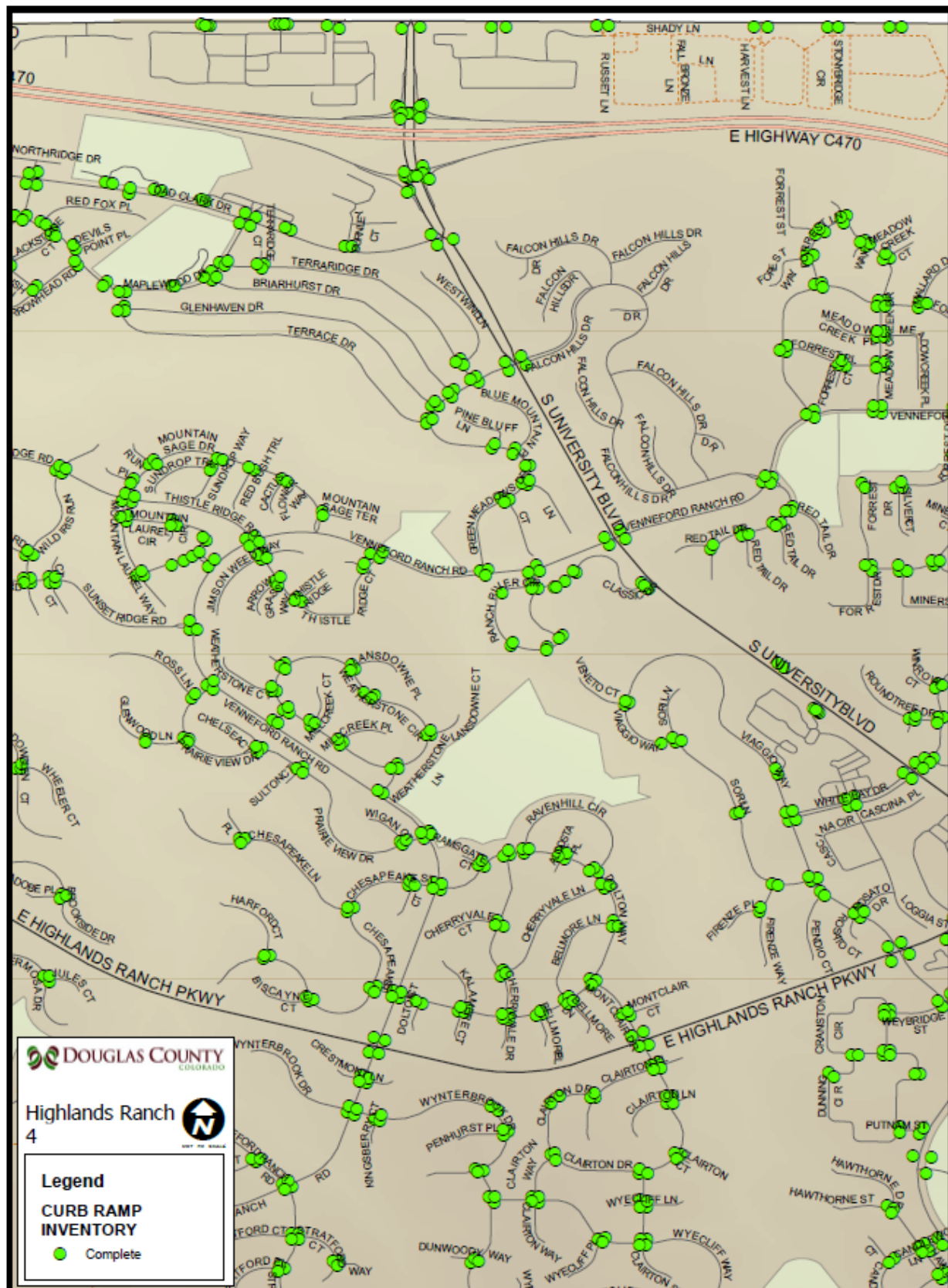


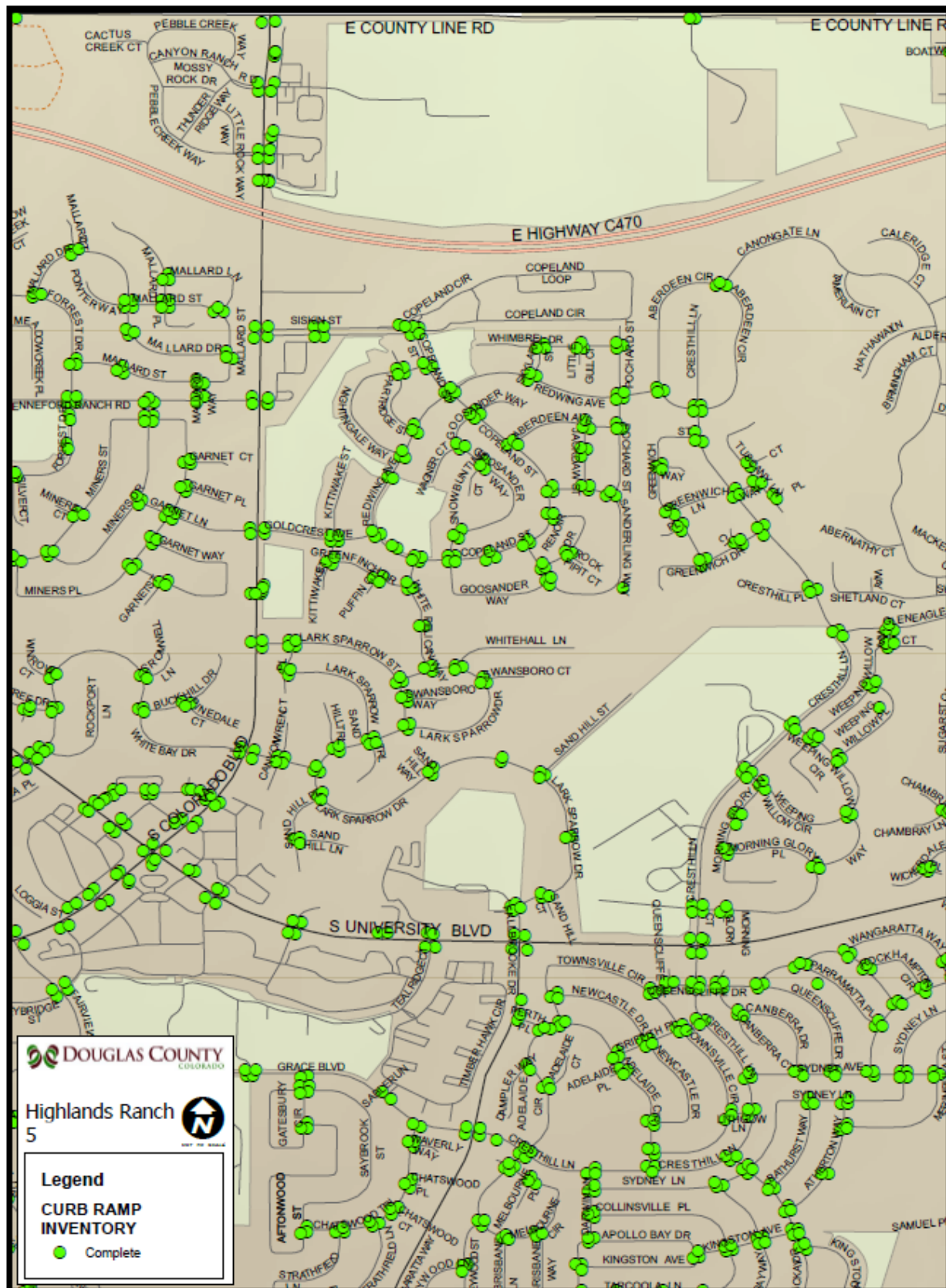


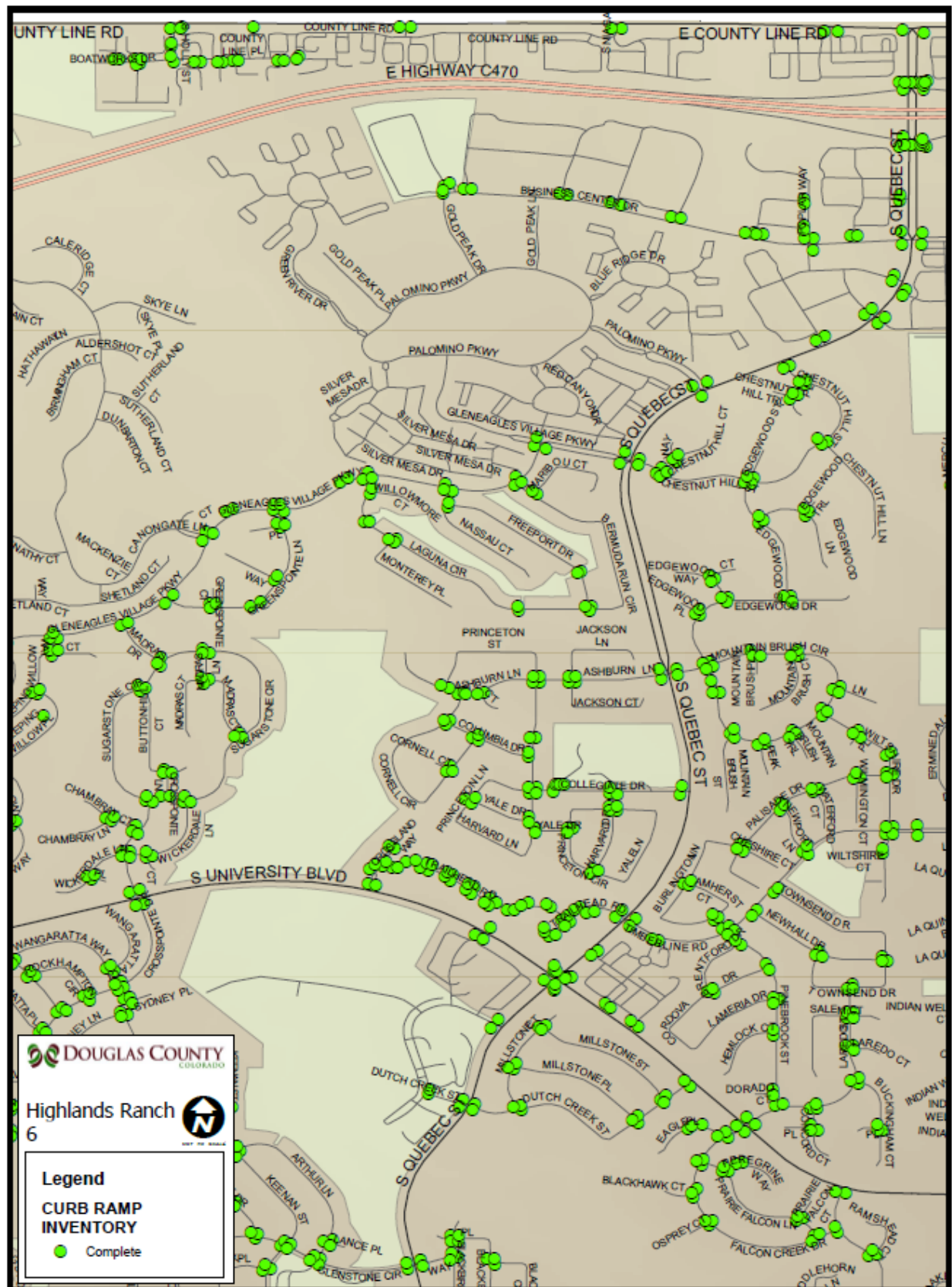


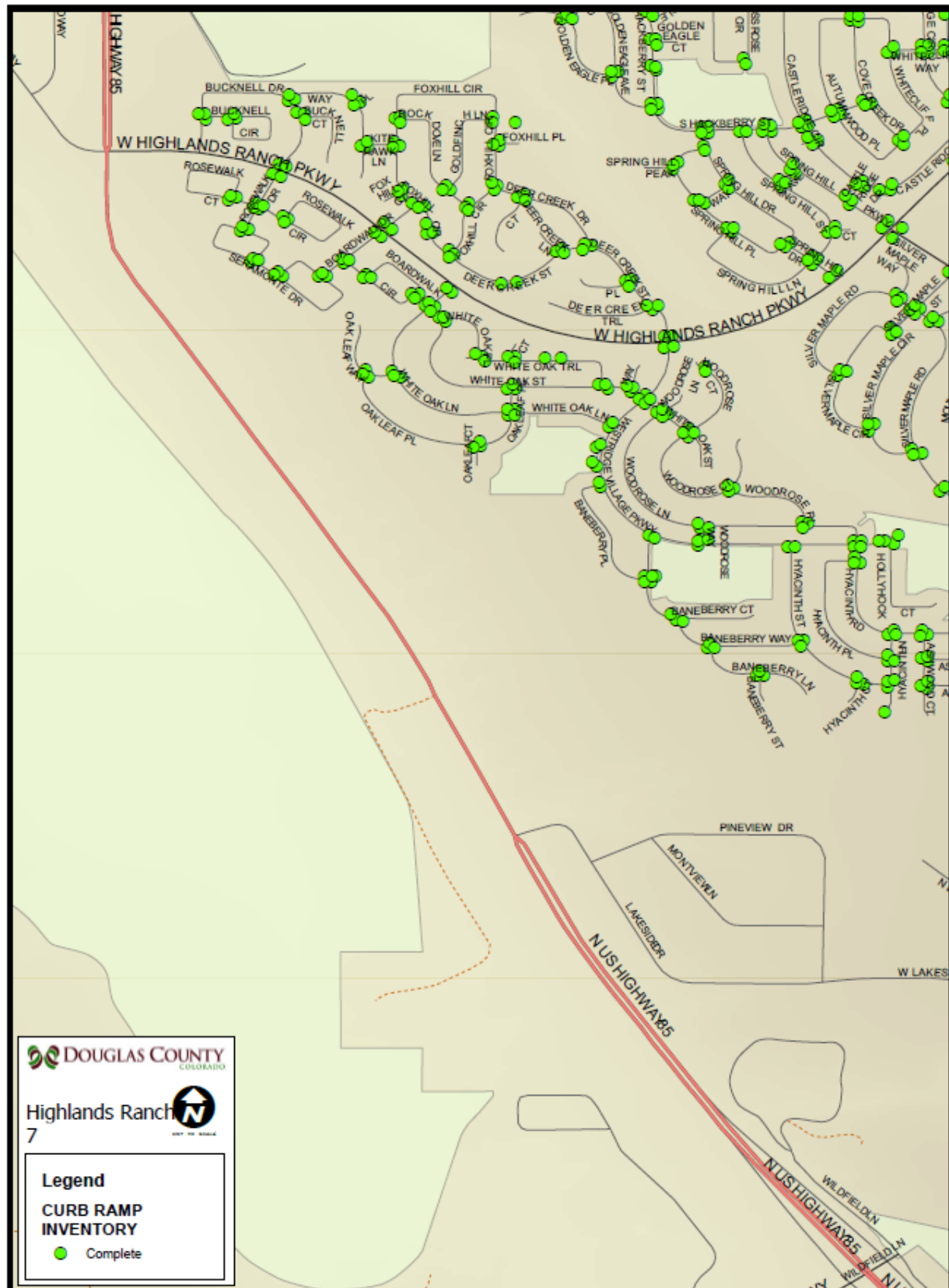


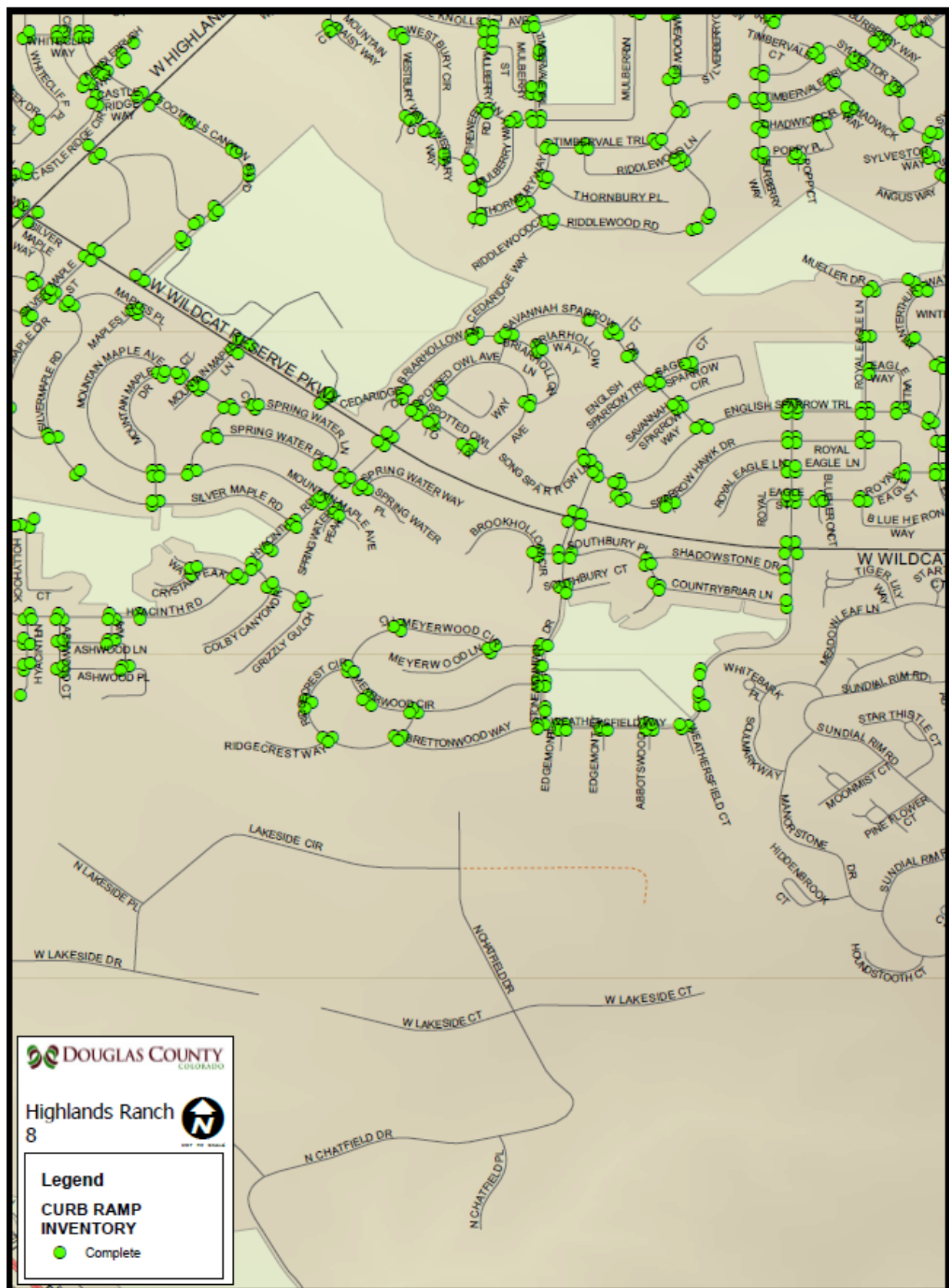






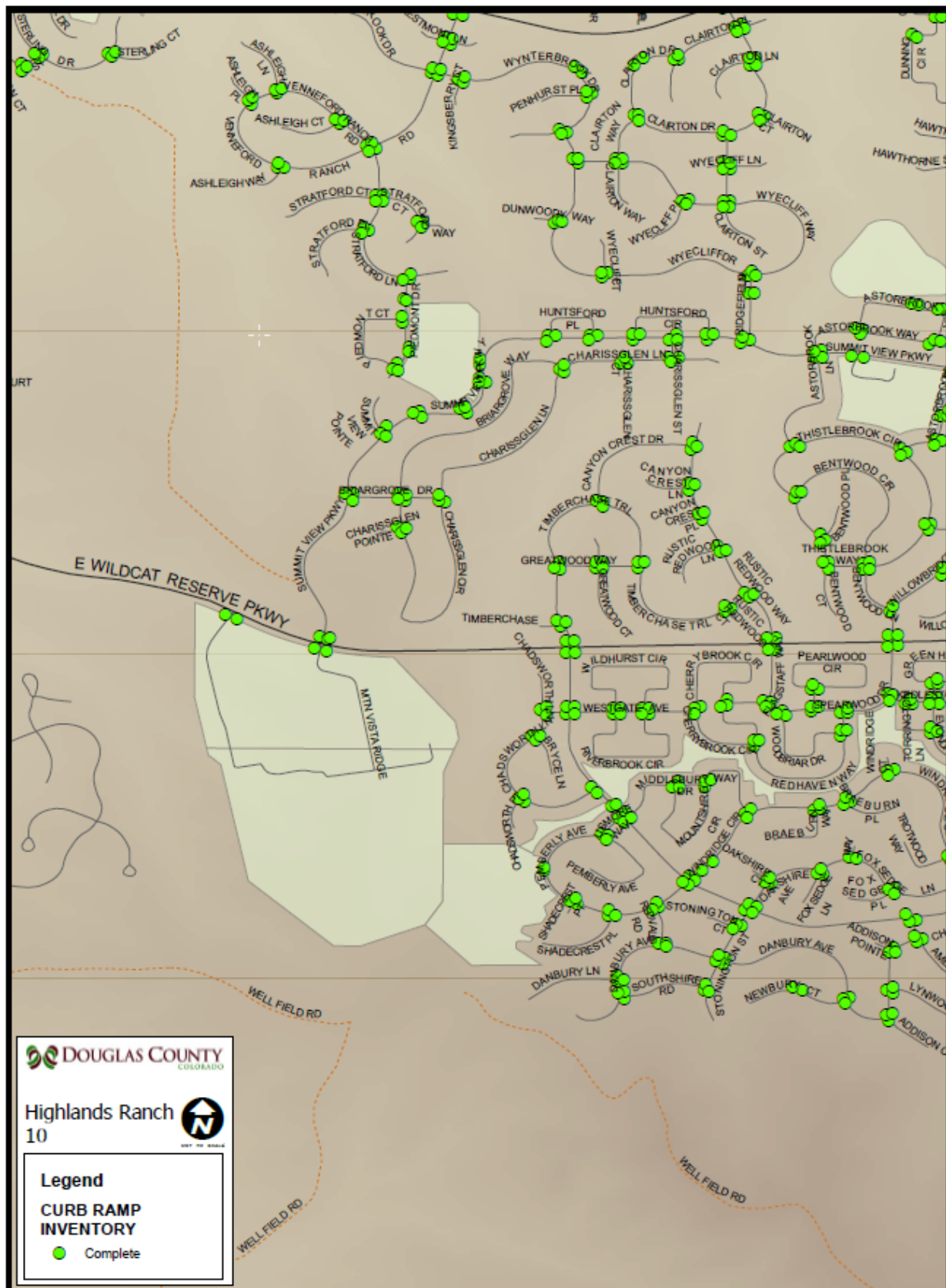


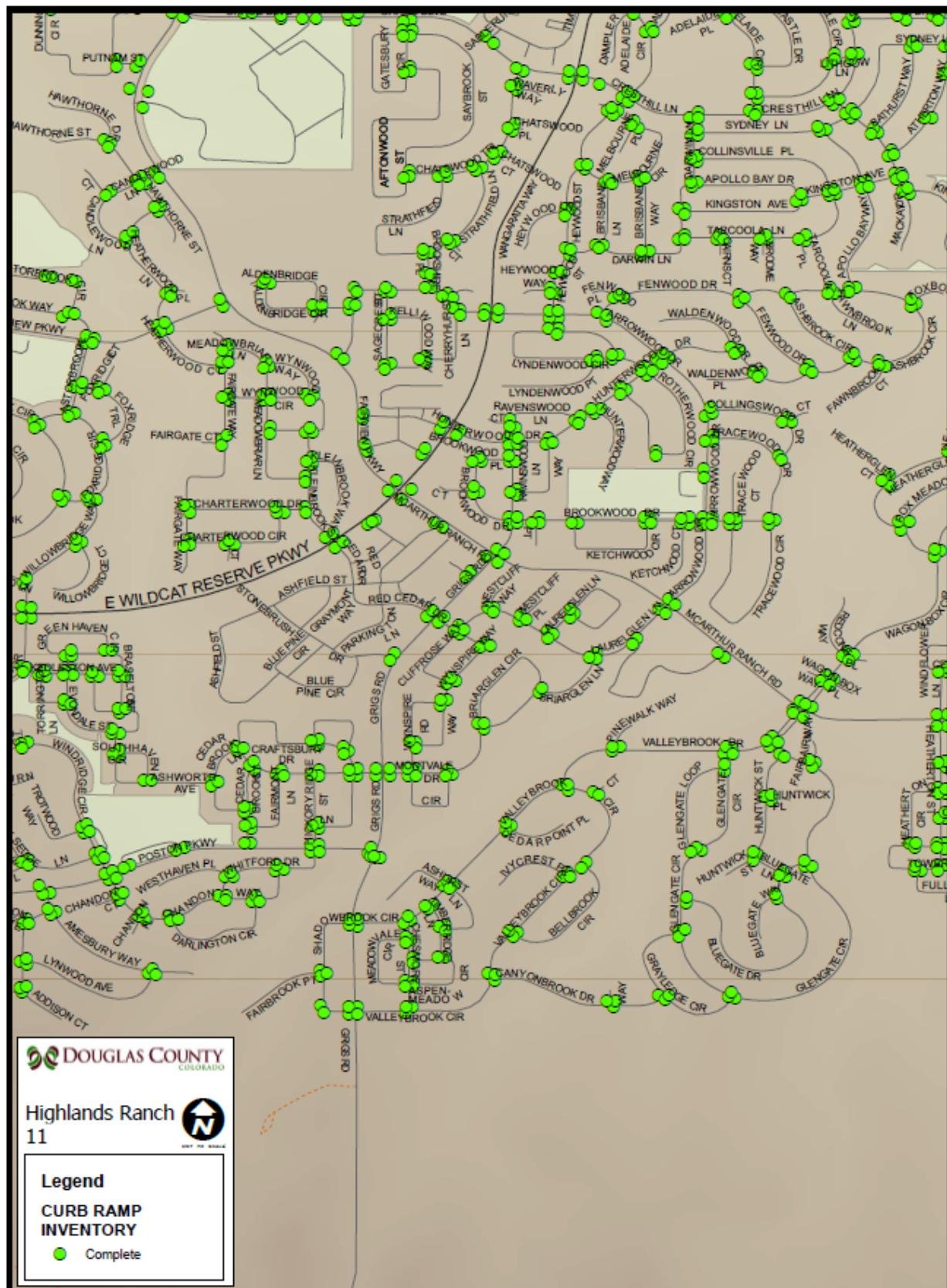




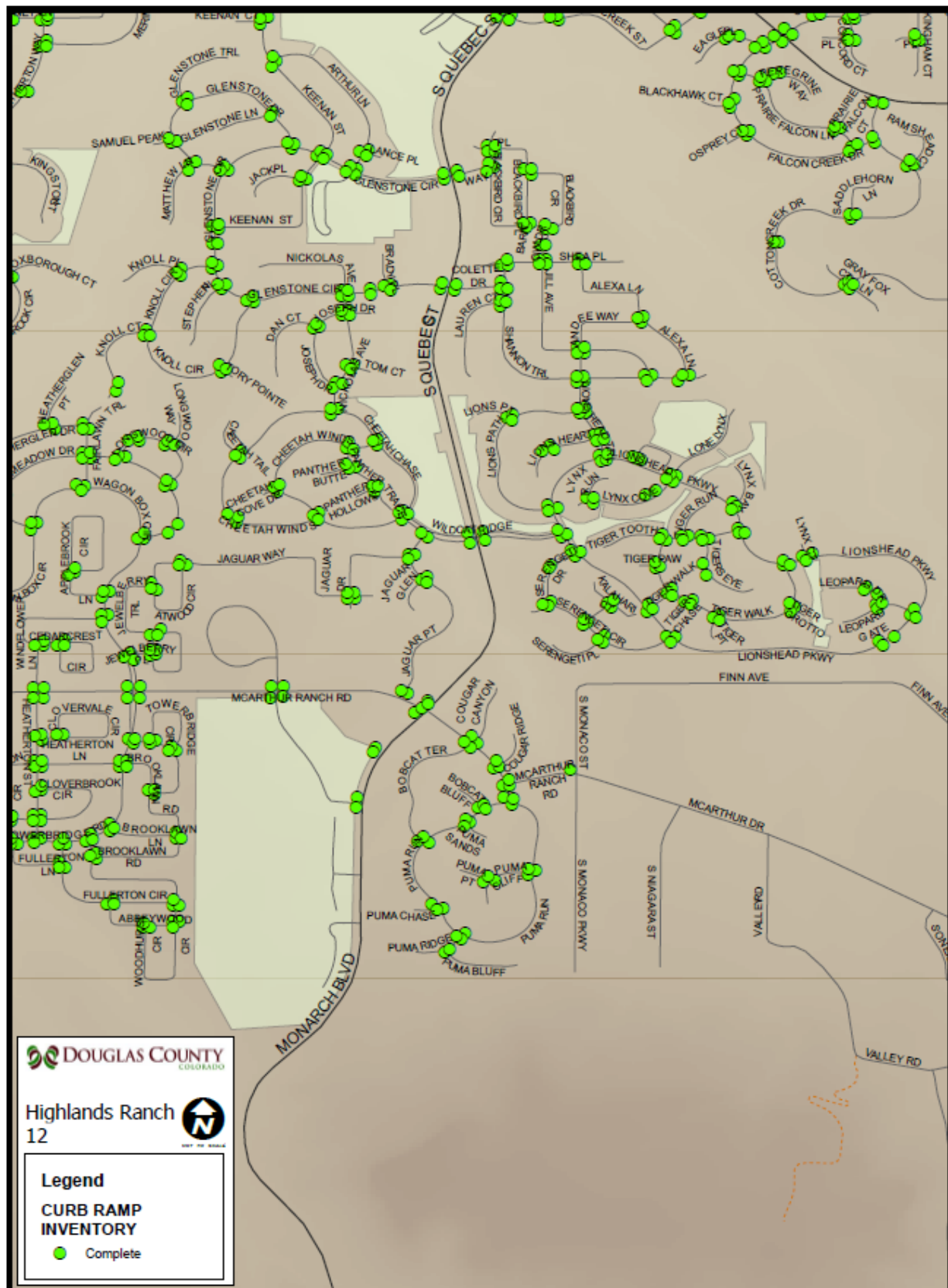
p. 32

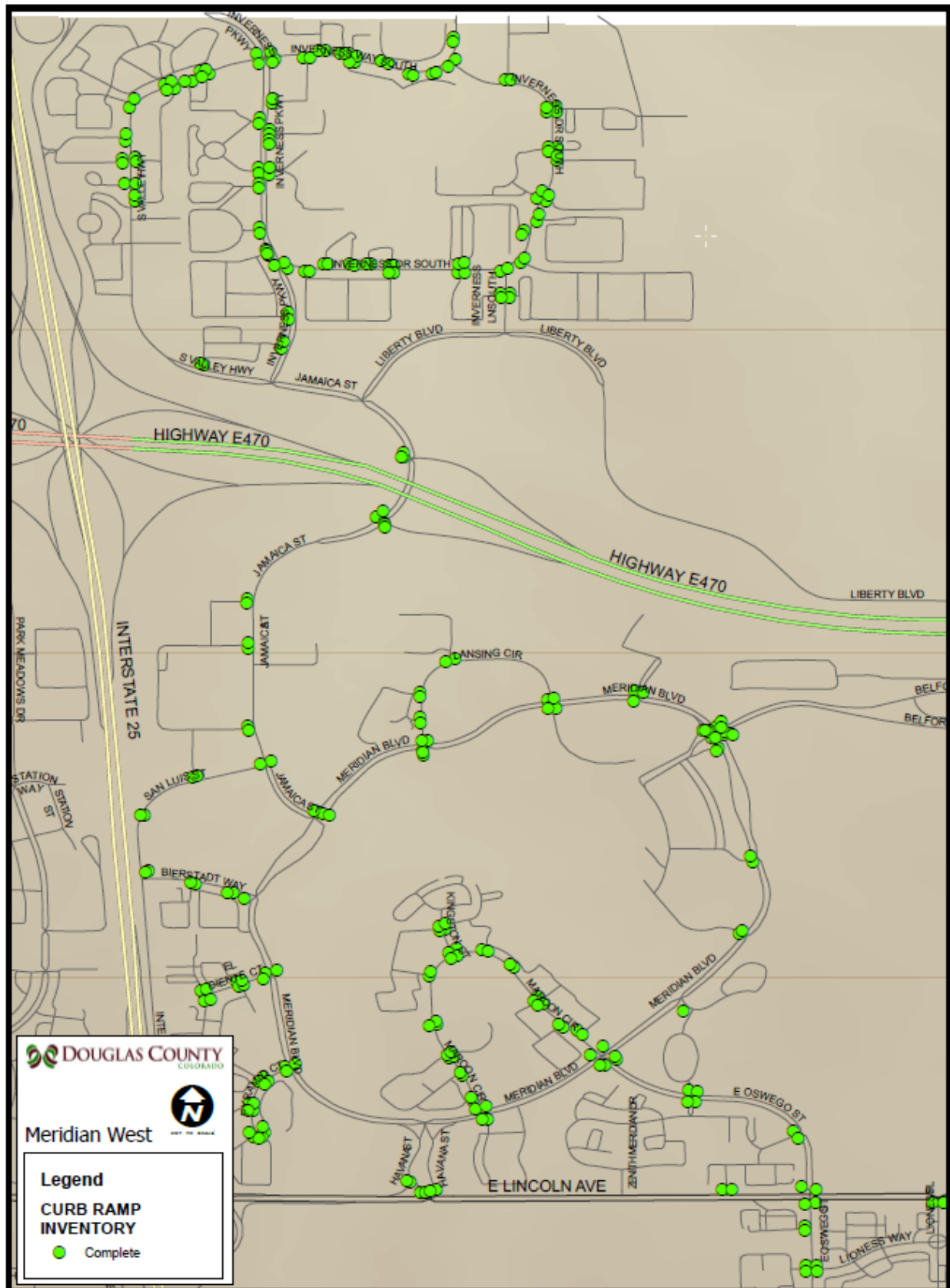




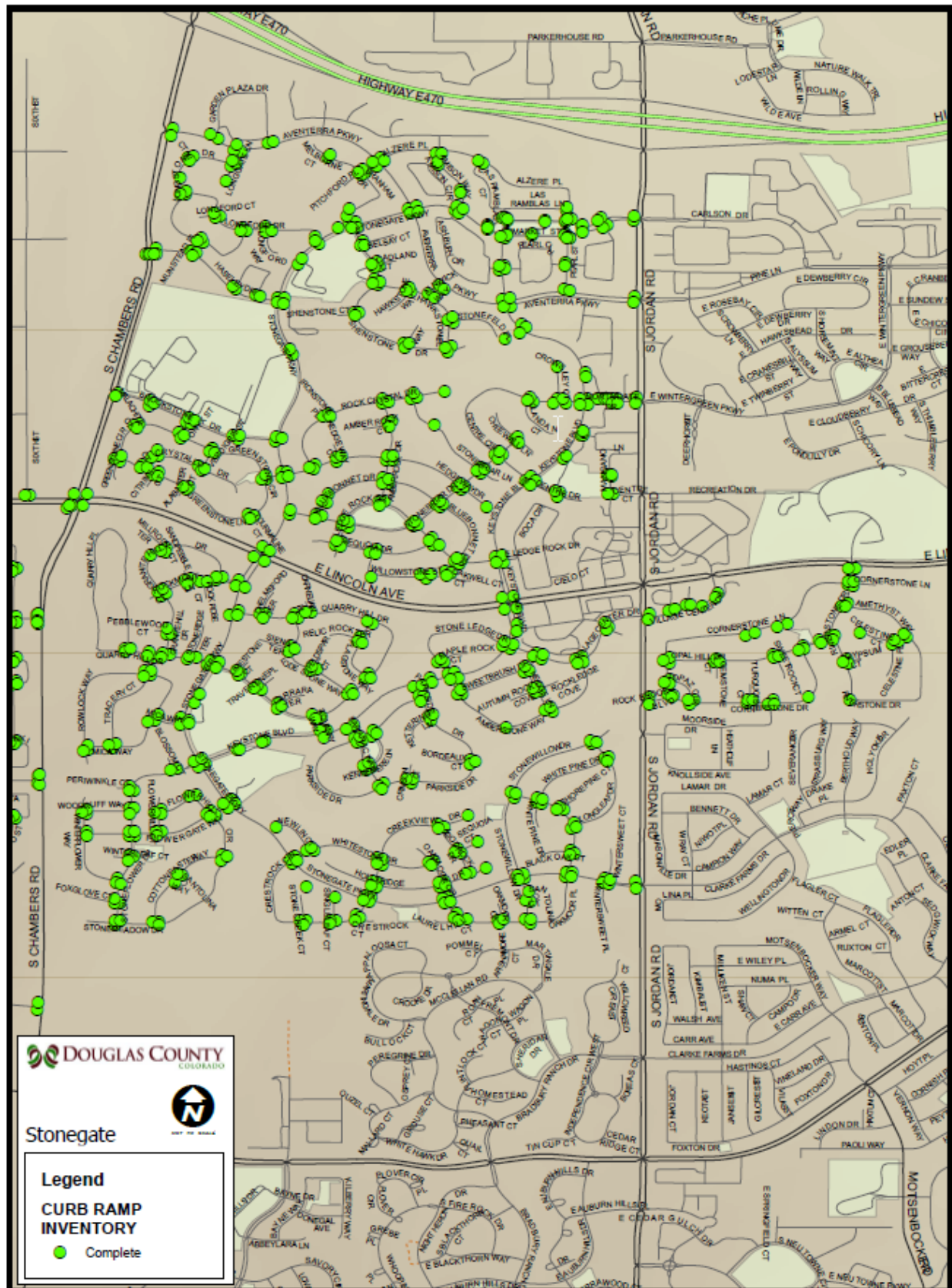


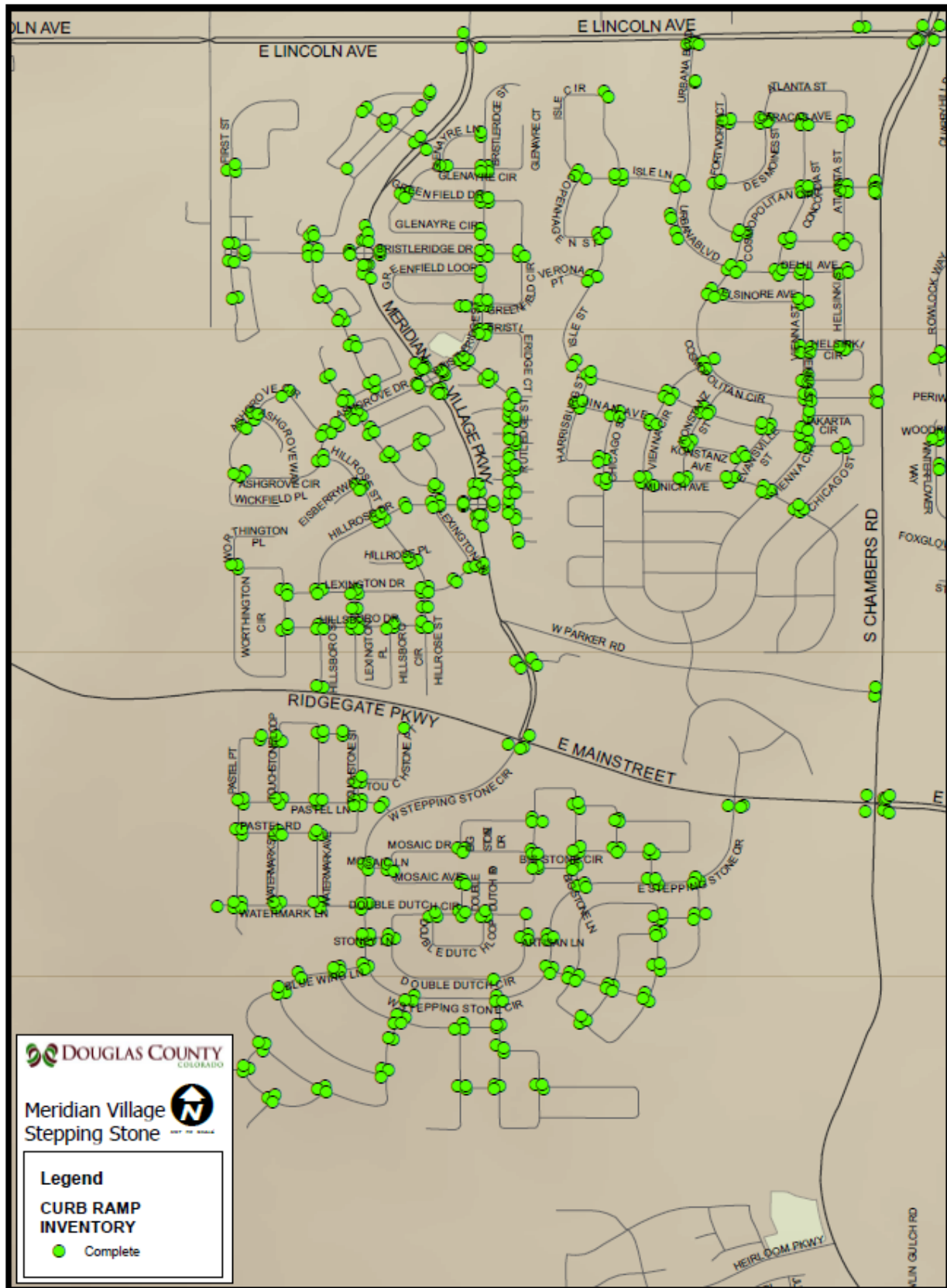
p. 35





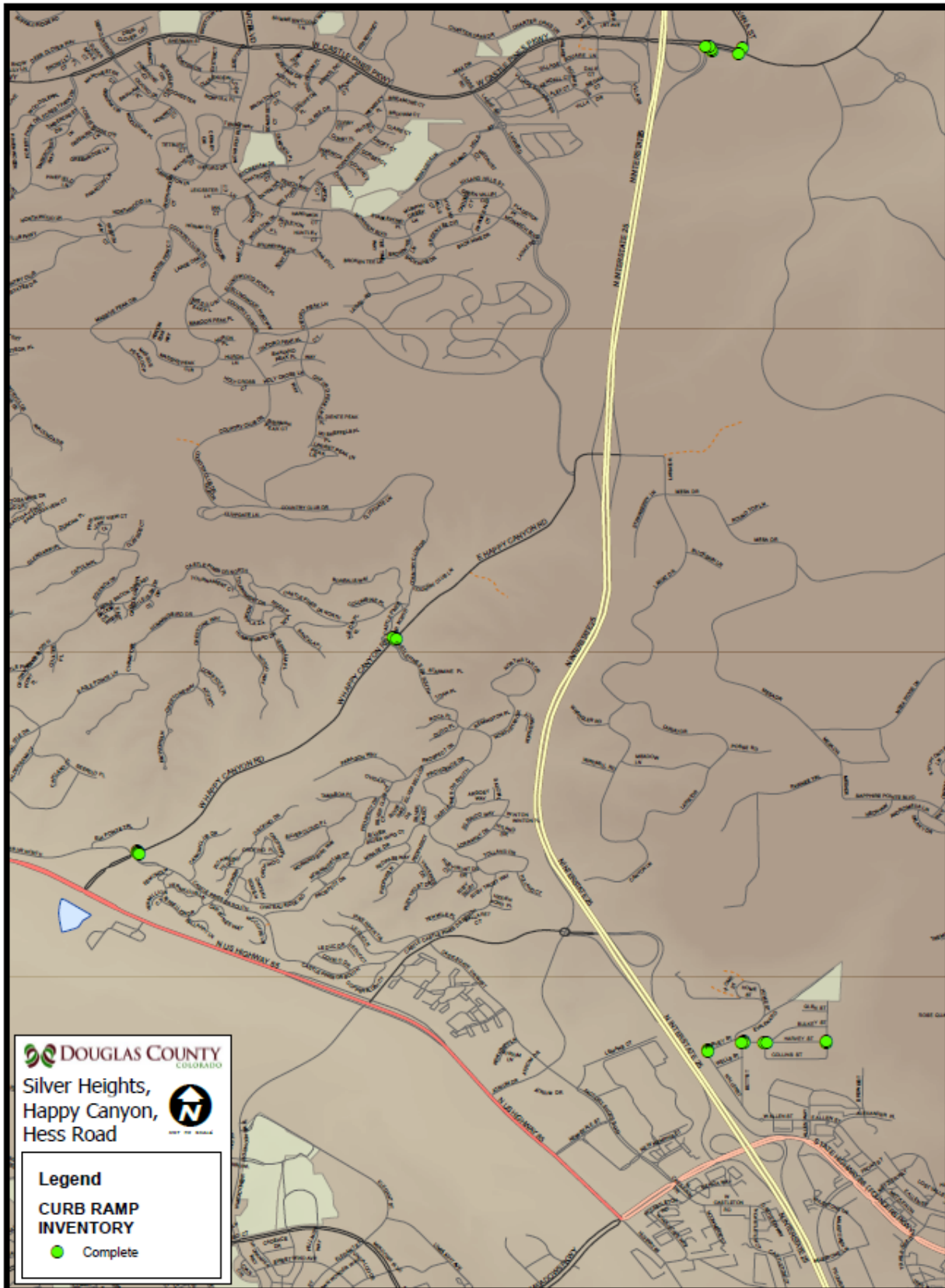


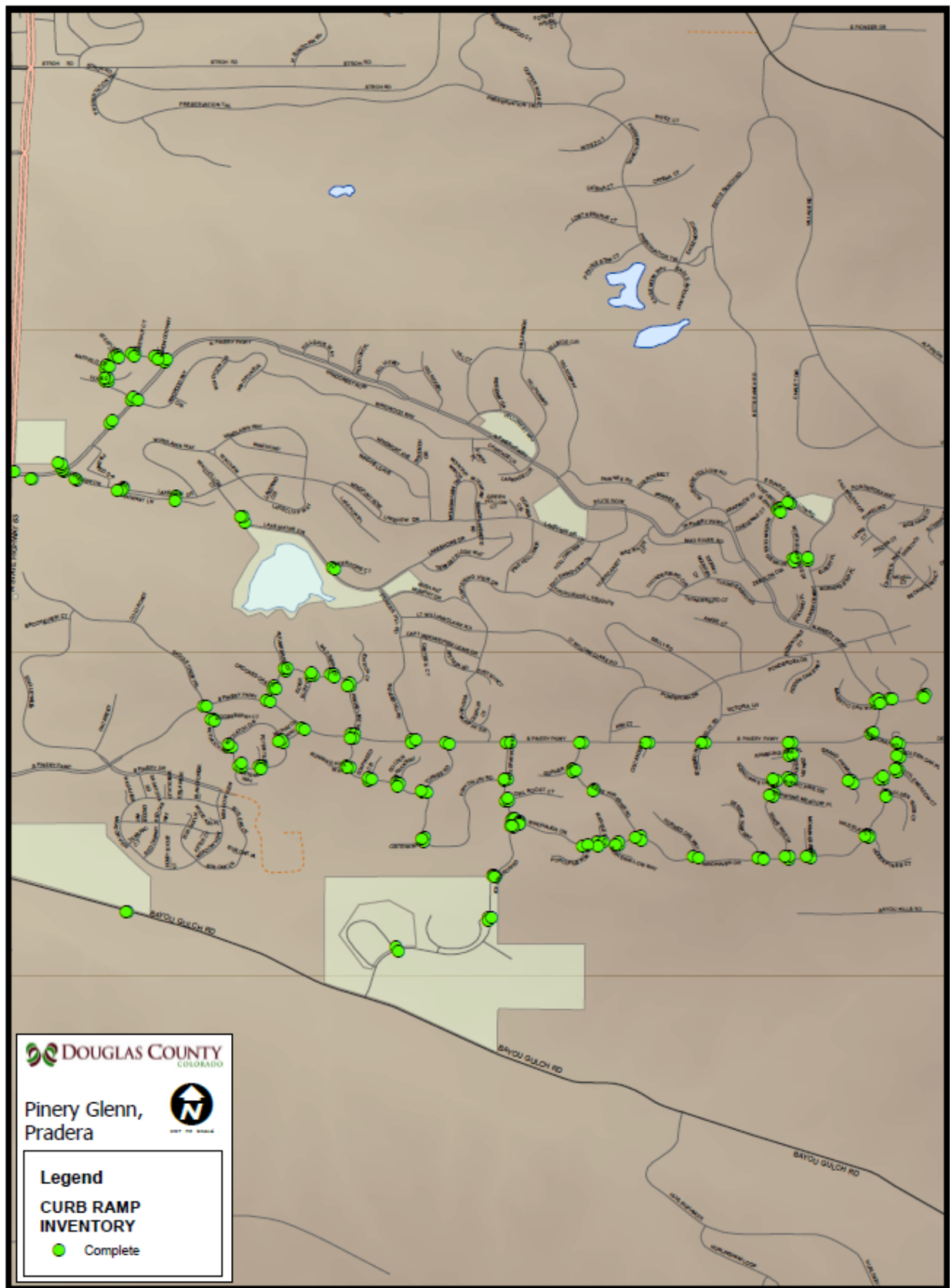


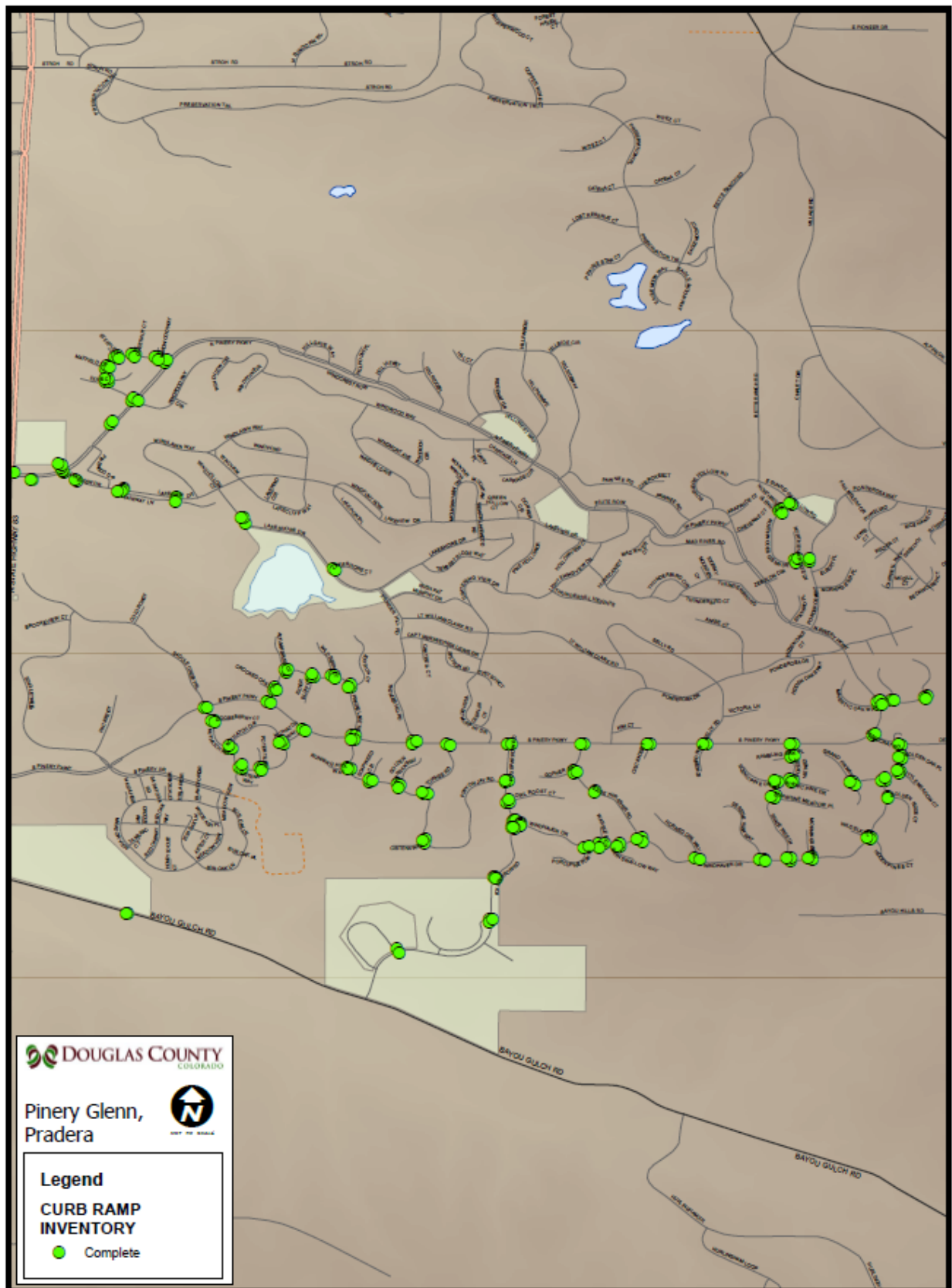


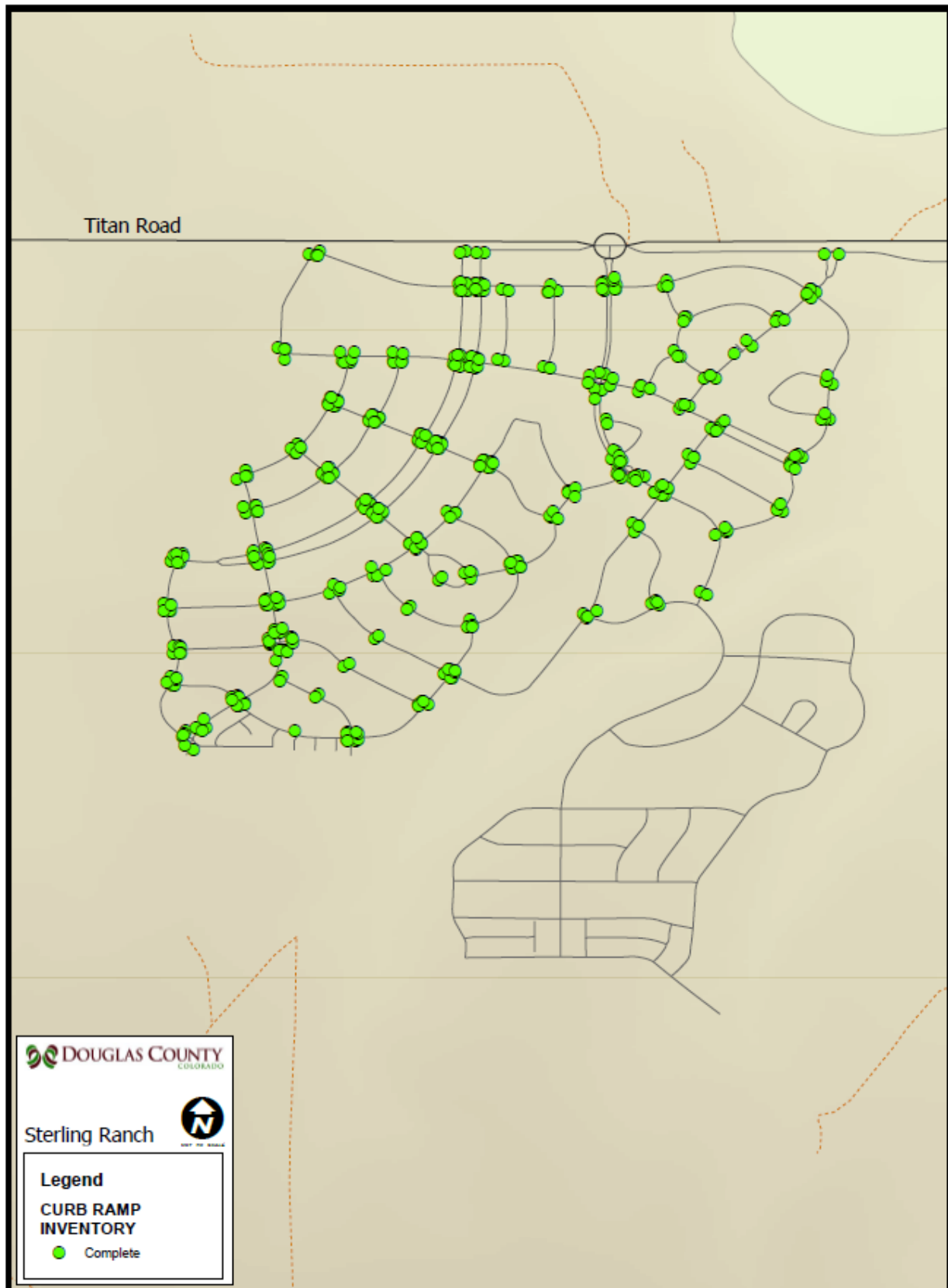












APPENDIX E – OVERVIEW OF ASSESSMENT ATTRIBUTES / PARAMETERS

CURB RAMP ASSESSMENT ELEMENTS:

1. **LOCATION DESCRIPTION:**
2. **PICTURES:**
3. **TYPE :**
 - Perpendicular (CDOT Type 1A)
 - Perpendicular, Paired (CDOT Type 1B, C & D)
 - Perpendicular, 10:1 Flares
 - Perpendicular, No Flares (CDOT Type 3A or 3B)
 - Perpendicular, Grade break behind back of curb
 - Parallel, Radius (CDOT Type 2A)
 - Parallel, (CDOT Type Parallel sidewalk ramp)
 - Parallel, Ramp modified (CDOT Type Pedestrian access ramp within sidewalk)
 - Pedestrian Refuge Island
4. **RAMP CONDITION:**
 - New
 - Good
 - Needs Replacement
5. **DRAINAGE PROBLEMS:**
 - Yes
 - No
6. **WIDTH:**
 - 4'
 - 6'
 - 8'
 - 10'
 - Other
7. **GRADE BREAK PERPENDICULAR? :**
 - Yes
 - No
8. **SLOPE 8.3% or <:**
 - Yes
 - No
9. **CROSS-SLOPE 2% or <:**
 - Yes
 - No
10. **FLARES PRESENT?:**
 - Yes
 - No
11. **FLARE SLOPE:**
 - 8.3%
 - <, 10:1
 - > 10:1
12. **MIN SW APP AND LAND @ TOP OF RAMP:**
 - Yes
 - No
 - Null
13. **BARRIER TO SIDE OF RAMP:**
 - Yes
 - No
 - Null
14. **GUTTER & RAMP FLUSH TRANSITION?:**
 - < ¼",
 - > ¼"
 - Yes
15. **GUTTER SLOPE 5% OR <?:**
 - Yes
 - No
16. **4'X4' CLEAR SPACE?:**
 - Yes
 - No
17. **JOINTS OR CRACKS > ½" ?:**
 - Yes
 - No
18. **VERTICAL BARRIER > 1/4"?:**
 - Yes
 - No
19. **HEIGHT OF BARRIER:**
 - Enter the height

20. **ABOVE OR BELOW TYPICAL GRADE:**

- Above
- Below

21. **TRUNCATED DOMES?:**

- Yes
- No

22. **EXTEND ENTIRE WIDTH OF RAMP?:**

- Yes
- No

23. **COLOR CONTRAST BETWEEN DOMES & RAMP?:**

- Yes
- No

24. **SIDEWALK ON BOTH APPROACHES TO RAMP?:**

- Yes
- No
- One Direction

25. **CONDITION OF SIDEWALK?:**

- New
- Good
- Needs Replacement

26. **SIDEWALK CROSS SLOPE 2% OR <?:**

- Yes
- No

27. **APPROACHING THE RAMP 5% OR <?:**

- Yes
- No

28. **WIDTH OF SIDEWALK:**

- Enter the width

29. **GENERAL COMMENTS:**

APPENDIX F – ASSESSMENT FINDINGS

CURB RAMPS

In the summer of 2017, Douglas County began collecting the data for the inventory of pedestrian facilities of curb ramps located within the public right-of-way. As of August, 2018, the County has approximately 9,842 curb ramps. Our assessment collected data at ramp locations within unincorporated Douglas County.

Of the curb ramp locations that were surveyed, approximately 83% were constructed prior to the current PROWAG guidelines and ADA standards, and provide some degree of accessibility. Based on the self-assessment survey parameters, approximately 17% of the curb ramp locations are compliant with the current PROWAG and ADA standards. Of the locations surveyed, 246 will require additional curb ramps for full accessibility. Approximately 4,564 (or 46%) locations now require the installation of detectable warning surfaces. Further, as a result of the survey, landing slopes and/or cross slope or geometry along the ramp or at the curb will require additional modification for full accessibility.

RAMP CONFIGURATION

Perpendicular Curb Ramps	18%
Parallel Curb Ramps	55%
Midblock Curb Ramp	23%
Median Curb Ramp	2%
Missing Curb Ramp	2%

RUNNING SLOPE OF RAMPS

8.3% or less	86%
--------------	-----

WIDTH OF RAMPS

4 foot	76%
6 foot	13%
8 foot	3%
10 foot	1%
Other	5%

OTHER CURB RAMP PROPERTIES

	YES	NO
Vertical Profile is free of obstructions	88%	12%
Clear Space at base of parallel traffic lane	97%	3%
Maximum Cross Slope is 2% or less	53%	47%
Detectable Warning Surface	54%	46%
Compliant Turning Space	51%	49%
Grade Break is Perpendicular	88%	12%
Ramp is Fully Compliant with current mandates	17%*	83%

**ADA/PROWAG compliant curb ramps must meet all prescribed design criteria. If one criteria of an asset is non-compliant, the asset technically does not meet accessibility requirements even though it may be substantially compliant.*

APPENDIX G – PUBLIC INVOLVEMENT DOCUMENTATION (WEBSITE, USER SURVEY, PRESS RELEASE, ETC.)

WEBSITE FOR ADA TRANSITION PLAN FOR PUBLIC RIGHT-OF-WAY

<http://www.douglas.co.us/ada-transition-plan-public-row/>

ADA Transition Plan for Public Right-of-Way

About the Project

Per Title II of the Americans with Disabilities Act (ADA) and 28 CFR 35.105, a public entity that employs 50 or more persons must develop a Transition Plan to improve accessibility to pedestrian facilities within the County's transportation system.

In accordance with the ADA, the Department of Public Works Engineering is in the process of creating and implementing the County's [Transition Plan](#) for Public Right-of-Way. The first step in this process is to conduct self-evaluation by inventorying and assessing existing pedestrian facilities to identify access barriers to persons with disabilities within the public Right-of-Way. The inventory will assess pedestrian facilities along roadways, primarily sidewalks and curb ramps, to document what facilities are present and in compliance with the applicable standards or are needing to be constructed or improved to be compliant. Part of the self-evaluation process includes a public outreach program to gain public input on and help identify particular existing areas of concern. The public outreach program will include public meetings and user surveys to circulate information and solicit public input.

The self-evaluation findings will provide the framework for developing the County's ADA Transition Plan. In addition, the Transition Plan will prioritize addressing the identified existing barriers and identify strategies for addressing them. Finally, the Transition Plan will also provide standards and guidelines for future improvements to the pedestrian network within the public Right-of-Ways.

Get Involved!

We would love to hear from you! Please take a moment to complete the [survey form](#). In addition to this survey, there will be future opportunities to interact with the project team.

Progress Improvements

Funding is an essential component for improving ADA accessibility within our current and future transportation network. Listed below are the annual maintenance appropriations for the past five Fiscal Years. Projects, such as sidewalk repairs and handicap retrofit projects, have been completed within the Contracted Road Maintenance [budget](#).

- 2018 = \$3,433,100
- 2017 = \$5,931,069
- 2016 = \$2,474,358
- 2015 = \$1,163,631
- 2014 = \$1,797,105



www.douglas.co.us

Department of Public Works Engineering

Engineering Services

ADA TRANSITION PLAN SURVEY

Douglas County, Colorado – ADA Transition Plan Survey

Douglas County, Colorado is performing a public outreach program toward the development of an Americans with Disabilities Act (ADA) Transition Plan (Plan). The purpose of this Plan is to prioritize the elimination of pedestrian accessibility barriers within public rights-of-ways in unincorporated Douglas County (County). Barriers are typically eliminated by adding or correcting sidewalks and curb ramps. One component of the public outreach program is this survey. It will be used to help document concerns and locations of needed improvements to accommodate disabled users of pedestrian facilities in the County. While efforts won't immediately result in improvements, the resulting Plan will provide the County a document that will provide guidance for funding and making ADA improvements.

It is the County's preference that this survey be taken online to help reduce misinterpretation and data entry errors. However, if you require this survey in an alternate format (paper, large font, audio), please contact Carol Konecny at 303.660.7490 or engineering@douglas.co.us

We would like your contact information to allow the ADA Transition Team to keep you up to date via email on Plan progress and follow up. Any personal information provided will remain confidential and will not be posted, shared, or otherwise made available outside the ADA Transition Plan Team. Only comment summaries will be documented in the ADA Transition Plan. Thank you for your input!

First Name* _____ Last Name* _____
and/or Business Name* _____
Street Address _____
City _____ State _____ Zip _____ Phone Number _____
Email Address* _____ (BCC distribution emails only)

1. Have you experienced physical barriers or constraints on a pedestrian path you currently use or would like to use?

Yes ☐ No ☐

If yes, please provide more information relating to your experiences by answering the next 4 questions. If no, jump to question 6.

2. Have you encountered street segments or locations where sidewalks are missing, inaccessible, or in poor condition?

Yes ☐ No ☐

If yes, please provide the street name(s), segment(s) of street, side(s) of street, and describe your concerns:

- 3. Have you encountered locations where curb ramps are missing, inaccessible, or in poor condition?**

Yes ☐ No ☐

If yes, please provide intersecting street names, location(s) and describe your concerns:

- 4. Have you encountered intersections or mid-block crossings, where medians or traffic signals affect your ability to cross the street?**

Yes ☐ No ☐

If yes, please provide intersecting street names, locations(s) and describe your concerns:

- 5. Have you encountered any physical obstructions like roots, trees, branches, bushes, retaining walls, signs, fire hydrants or other?**

Yes ☐ No ☐

If yes, please provide street name(s), segment(s) of street, side(s) of street, and describe your concerns:

- 6. Do you have any more specific or general comments that you feel the ADA Transition Plan Team should consider related to pedestrian facilities?**

Thank you for participating in this survey!

Please mail hard copies to Carol Konecny at Douglas County Department of Public Works Engineering, 100 Third Street, Castle Rock, CO 80104 or email: engineering@douglas.co.us

County seeks public input on ADA Transition Plan for Public Right-of-Way

Published on November 7, 2018 in [2018](#), [Breaking News](#), [Community & Human Services](#) & [Personal and Public Safety](#)



Are you or someone close to you interested in what the County is doing to improve access for persons with disabilities to pedestrian facilities (sidewalks, curb ramps, and roadway crossings) within the public right-of-way?

Douglas County is offering two ways for you to share specific areas of concern in this federally-required ADA Transition Plan: an online survey and a public open house.

The [brief survey](#) can be accessed through the County's website and is estimated to take approximately five minutes to complete. The survey will be online through February 15, 2019.

The public open house will be held on Tuesday, November 27, 2018, from 4 – 6 p.m., at the Douglas County Government Administration Building, in the first floor Hearing Room, 100 Third Street, in Castle Rock.

Interested parties will learn about the Transition Plan progress and will have the opportunity to visit with project staff and provide input on areas of concern. Findings from data collection and input provided will help develop the County's ADA Transition Plan for Public Right-of-Way.

Survey and Transition Plan information can be made available in alternative accessible formats upon request. For information about obtaining an alternative format, contact Carol Konecny, Douglas County Department of Public Works Engineering, 100 Third Street, Castle Rock, CO 80104, 303-660-7490 or ckonecny@douglas.co.us

NEXT DOOR – PUBLIC NOTIFICATIONS



Public Affairs Douglas County, [Douglas County Government](#) AGENCY



County seeks public input on ADA Transition Plan for Public Right-of-Way

Are you or someone close to you interested in what the County is doing to improve access for persons with disabilities to pedestrian facilities (sidewalks, curb ramps, and roadway crossings) within the public right-of-way? Douglas County is offering two ways for you to share specific areas of concern in this federally-required ADA

See more...

ADA Transition Plan Survey - Douglas County Government

Douglas County, Colorado is performing a public outreach program toward the development of

[DOUGLAS.CO.US](https://www.douglas.co.us)

7 Nov · Subscribers of Douglas County Government in 75 neighborhoods



Reply



3 · 7184 Impressions

ADA TRANSITION PLAN SURVEY RESPONSES / SUMMARY

Survey Connect Response #1

Date Received: 11/7/2018

Have you experienced physical barriers or constraints on a pedestrian path you currently use or would like to use?

- No

Survey Connect Response #2

Date Received: 11/7/2018

Have you experienced physical barriers or constraints on a pedestrian path you currently use or would like to use?

- No

Do you have any more specific or general comments that you feel the ADA Transition Plan Team should consider related to pedestrian facilities?

Sidewalks should have ADA accessible construction at corners in towns and in parks, there should be some paths that use materials like crushed granite as opposed to just dirt to allow access.

Survey Connect Response #3

Date Received: 11/7/2018

Have you experienced physical barriers or constraints on a pedestrian path you currently use or would like to use?

- Yes

Have you encountered street segments or locations where sidewalks are missing, inaccessible or in poor condition?

- Yes

If yes, please provide the street name(s), segment(s) of street, side(s) of street and describe your concerns:

Highway 67 through Sedalia and all the adjoining streets. Makes walking through Sedalia a life threatening activity. Anyone with a physical handicap is at a greater risk. I as an amputee face this anytime I walk in Sedalia.

Have you encountered locations where curb ramps are missing, inaccessible or in poor condition?

- Yes

If yes, please provide intersecting street names, location(s) and describe your concerns:

Same as above.

Have you encountered intersections or mid-block crossings where medians or traffic signals affect your ability to cross the street?

- Yes

Have you encountered any physical obstructions like roots, trees, branches, bushes, retaining walls, sign, fire hydrants or other?

- No

Survey Connect Response #4

Date Received: 11/7/2018

Have you experienced physical barriers or constraints on a pedestrian path you currently use or would like to use?

- No

Do you have any more specific or general comments that you feel the ADA Transition Plan Team should consider related to pedestrian facilities?

I am not physically challenged, however, I do push my grandchildren in strollers on sidewalks in Douglas county. The biggest problem I experience is unlevel concrete mostly due to tree roots.`

Survey Connect Response #5

Date Received: 11/7/2018

Have you experienced physical barriers or constraints on a pedestrian path you currently use or would like to use?

- No

Do you have any more specific or general comments that you feel the ADA Transition Plan Team should consider related to pedestrian facilities?

No, not at this point. Mostly interested in updates to DougCo's ADA Transition Plan, as we occasionally get questions on properties not within the Town's jurisdiction. Thank you.

Survey Connect Response #6

Date Received: 11/7/2018

Have you experienced physical barriers or constraints on a pedestrian path you currently use or would like to use?

- No

Do you have any more specific or general comments that you feel the ADA Transition Plan Team should consider related to pedestrian facilities?

My daughter is disabled and I would highly recommend consideration of audible cross walk lights that signal when it's safe for pedestrians to cross.

Survey Connect Response #7

Date Received: 11/7/2018

Have you experienced physical barriers or constraints on a pedestrian path you currently use or would like to use?

- Yes

Have you encountered street segments or locations where sidewalks are missing, inaccessible or in poor condition?

- Yes

If yes, please provide the street name(s), segment(s) of street, side(s) of street and describe your concerns:

Various locations thru out Castle Rock. Too many to list. I use a wheelchair full time.

Have you encountered locations where curb ramps are missing, inaccessible or in poor condition?

- Yes

If yes, please provide intersecting street names, location(s) and describe your concerns:

Various locations thru out Castle Rock. Too many to list. I use a wheelchair full time.

Have you encountered intersections or mid-block crossings where medians or traffic signals affect your ability to cross the street?

- No

Have you encountered any physical obstructions like roots, trees, branches, bushes, retaining walls, sign, fire hydrants or other?

- Yes

If yes, please provide street name(s), segment(s) of street, side(s) of street, and describe your concerns:

Various locations thru out Castle Rock. Too many to list. I use a wheelchair full time.

Do you have any more specific or general comments that you feel the ADA Transition Plan Team should consider related to pedestrian facilities?

I think education in to all disabilities and the needs of those people like myself is key.

Survey Connect Response #8

Date Received: 11/7/2018

Have you experienced physical barriers or constraints on a pedestrian path you currently use or would like to use?

- No

Survey Connect Response #9

Date Received: 11/7/2018

Have you experienced physical barriers or constraints on a pedestrian path you currently use or would like to use?

- No

Do you have any more specific or general comments that you feel the ADA Transition Plan Team should consider related to pedestrian facilities?

Be sure that crosswalks remain properly delineated and crosswalk buttons are functional with adequate time for crossing.

Survey Connect Response #10

Date Received: 11/7/2018

Have you experienced physical barriers or constraints on a pedestrian path you currently use or would like to use?

- Yes

Have you encountered street segments or locations where sidewalks are missing, inaccessible or in poor condition?

- Yes

If yes, please provide the street name(s), segment(s) of street, side(s) of street and describe your concerns:

Raised sidewalk pavement along sidewalk alongside Highlands Ranch Pkwy. between Westridge Knolls Blvd. and Lucent Blvd.

Have you encountered locations where curb ramps are missing, inaccessible or in poor condition?

- No

Have you encountered intersections or mid-block crossings where medians or traffic signals affect your ability to cross the street?

- Yes

If yes, please provide intersecting street names, location(s) and describe your concerns:

Midblock crossing providing northbound traffic access to Carlye Park sub-association is in poor repair. Major cross streets are Highlands Ranch Pkwy. and Lucent Blvd.

Have you encountered any physical obstructions like roots, trees, branches, bushes, retaining walls, sign, fire hydrants or other?

- Yes

If yes, please provide street name(s), segment(s) of street, side(s) of street, and describe your concerns:

Tree branch overhangs at approximately 5 feet along sidewalk alongside Highlands Ranch Pkwy. between Westridge Knolls Blvd. and Lucent Blvd impedes crossing for those unable to bend or navigate into grass.

Do you have any more specific or general comments that you feel the ADA Transition Plan Team should consider related to pedestrian facilities?

Intersection at Burgundy St. and Broadway is dangerous, causing foot traffic to have difficulty determining when it is safe to cross. Proposed safe crossing sign allowing safe passage to north- and south-bound foot traffic would make nearby park and ADA-concerned pedestrian traffic safer.

Survey Connect Response #11

Date Received: 11/7/2018

Have you experienced physical barriers or constraints on a pedestrian path you currently use or would like to use?

- No

Do you have any more specific or general comments that you feel the ADA Transition Plan Team should consider related to pedestrian facilities?

I assume that all new construction in Douglas County is required to meet ADA guidelines, and that would include street crossings, ramps etc. Therefore, I assume your survey is only geared towards existing pedestrian paths, sidewalks etc. In that case I believe things should be left as is until the item actually needs replacement, unless a request is made by a handicapped person for a specific item. In other words, I feel it is a waste of taxpayer money if Douglas County intends to re-pour every street corner in the county with a ramp. That could be the long-term goal, but the County should at least let the current cement wear out before they go and tear it out and replace.

Survey Connect Response #12

Date Received: 11/8/2018

Have you experienced physical barriers or constraints on a pedestrian path you currently use or would like to use?

- No

Survey Connect Response #13

Date Received: 11/8/2018

Have you experienced physical barriers or constraints on a pedestrian path you currently use or would like to use?

- Yes

Have you encountered street segments or locations where sidewalks are missing, inaccessible or in poor condition?

- Yes

If yes, please provide the street name(s), segment(s) of street, side(s) of street and describe your concerns:

If I knew you would require this information, I would've taken notes. My comments are just general for the Parker, Lone Tree and Castle Rock area.

Have you encountered locations where curb ramps are missing, inaccessible or in poor condition?

- Yes

If yes, please provide intersecting street names, location(s) and describe your concerns:

Can't recall specific locations

Have you encountered intersections or mid-block crossings where medians or traffic signals affect your ability to cross the street?

- Yes

Have you encountered any physical obstructions like roots, trees, branches, bushes, retaining walls, sign, fire hydrants or other?

- Yes

Do you have any more specific or general comments that you feel the ADA Transition Plan Team should consider related to pedestrian facilities?

Curbs are not user friendly. Prefer curbless without ribbed bottoms. Need more time to cross wide streets. Parker businesses and general DC businesses are not knowledgeable about service dog laws or requirements. Could use training. Most businesses in DC do not have automatic open/close doors.

Survey Connect Response #14

Date Received: 11/8/2018

Have you experienced physical barriers or constraints on a pedestrian path you currently use or would like to use?

- Yes

Have you encountered street segments or locations where sidewalks are missing, inaccessible or in poor condition?

- No

Have you encountered locations where curb ramps are missing, inaccessible or in poor condition?

- Yes

If yes, please provide intersecting street names, location(s) and describe your concerns:

Walden Ct and Longfellow, Walden ct and James. Both locations typically have cars parked in or on the curb ramps. Owners have been contacted and requested to move their vehicles. They refused.

Have you encountered intersections or mid-block crossings where medians or traffic signals affect your ability to cross the street?

- No

Have you encountered any physical obstructions like roots, trees, branches, bushes, retaining walls, sign, fire hydrants or other?

- Yes

If yes, please provide street name(s), segment(s) of street, side(s) of street, and describe your concerns:

Along Burntwood, between Stowe and Devon. Lots of bushes and branches hanging over sidewalks.

Do you have any more specific or general comments that you feel the ADA Transition Plan Team should consider related to pedestrian facilities?

Enforcement of parking restrictions at curb cuts needs to be stepped up.

Survey Connect Response #15

Date Received: 11/8/2018

Have you experienced physical barriers or constraints on a pedestrian path you currently use or would like to use?

- Yes

Have you encountered street segments or locations where sidewalks are missing, inaccessible or in poor

condition?

- Yes

If yes, please provide the street name(s), segment(s) of street, side(s) of street and describe your concerns:

Intersection of Lucent and Plaza. Cross walk and pedestrian lights needed on South leg.

Have you encountered locations where curb ramps are missing, inaccessible or in poor condition?

- No

Have you encountered intersections or mid-block crossings where medians or traffic signals affect your ability to cross the street?

- Yes

If yes, please provide intersecting street names, location(s) and describe your concerns:

Pedestrian signal in operative on North West corner of Ridgeline and H R pky.

Have you encountered any physical obstructions like roots, trees, branches, bushes, retaining walls, sign, fire hydrants or other?

- No

Survey Connect Response #16

Date Received: 11/8/2018

Have you experienced physical barriers or constraints on a pedestrian path you currently use or would like to use?

- No

Survey Connect Response #17

Date Received: 11/8/2018

Have you experienced physical barriers or constraints on a pedestrian path you currently use or would like to use?

- No

Survey Connect Response #18

Date Received: 11/8/2018

Have you experienced physical barriers or constraints on a pedestrian path you currently use or would like to use?

- No

Survey Connect Response #19

Date Received: 11/8/2018

Have you experienced physical barriers or constraints on a pedestrian path you currently use or would like to use?

- No

Do you have any more specific or general comments that you feel the ADA Transition Plan Team should consider related to pedestrian facilities?

General Pedestrian safety and accessibility should be a greater priority than universal ADA implementation. Too many ADA sidewalk modifications are costly and go unused and quickly damaged. The ADA laws are excessive and too costly.

Survey Connect Response #20

Date Received: 11/8/2018

Have you experienced physical barriers or constraints on a pedestrian path you currently use or would like to use?

- No

Do you have any more specific or general comments that you feel the ADA Transition Plan Team should consider related to pedestrian facilities?

I have had to use a temporary plaquard due to a broken leg, and I have found the handicapped parking spaces in front of or nearby shops is adequate. Thank you.

Survey Connect Response #21

Date Received: 11/9/2018

Have you experienced physical barriers or constraints on a pedestrian path you currently use or would like to use?

- Yes

Have you encountered street segments or locations where sidewalks are missing, inaccessible or in poor condition?

- Yes

If yes, please provide the street name(s), segment(s) of street, side(s) of street and describe your concerns:

On the sidewalk crossing the intersection of Stonegate Parkway/Clarke Farms drive(?) and Jordan (on the Clark Farms side there is a big bump that is hard to get over. Also crossing the street anywhere on Lincoln and Jordan I feel like I'm risking my life.

Have you encountered locations where curb ramps are missing, inaccessible or in poor condition?

- No

Have you encountered intersections or mid-block crossings where medians or traffic signals affect your ability to cross the street?

- No

Have you encountered any physical obstructions like roots, trees, branches, bushes, retaining walls, sign, fire hydrants or other?

- No

Do you have any more specific or general comments that you feel the ADA Transition Plan Team should consider related to pedestrian facilities?

I am very thankful that I can get around and even that the bus is so accessible. I just get scared of busy intersections in my wheelchair when there is no option but to "go for it" and just hope no one will hit me at 50mph.

Survey Connect Response #22

Date Received: 11/9/2018

Have you experienced physical barriers or constraints on a pedestrian path you currently use or would like to use?

- No

Do you have any more specific or general comments that you feel the ADA Transition Plan Team should consider related to pedestrian facilities?

I see wheelchair users on Foot Hills Path and Foot Hills Park - either alone or walking their dogs. I have never asked them about how they feel they get around on the paths, but my impression is that the cement sidewalks are good for their needs, and keeping those maintained (sealed, patched, or replaced as required) is quite beneficial to their enjoyment.

Survey Connect Response #23

Date Received: 11/9/2018

Have you experienced physical barriers or constraints on a pedestrian path you currently use or would like to use?

- Yes

Have you encountered street segments or locations where sidewalks are missing, inaccessible or in poor

condition?

- No

Have you encountered locations where curb ramps are missing, inaccessible or in poor condition?

- No

Have you encountered intersections or mid-block crossings where medians or traffic signals affect your ability to cross the street?

- Yes

If yes, please provide intersecting street names, location(s) and describe your concerns:

On Village Center Drive between Jordan Rd and Keystone Blvd traffic has gotten so congested with traffic bypassing the intersection of Lincoln and Jordan that you cannot cross the street safely. Traffic do's not so down or stop if you trying to cross the street to get to the little shop's at Stonegate Plaza. We need painted crosswalks from the housing at Stonegate to cross behind the plaza, we also need speed bumps or some other way to handle this unsafe traffic in our area.

Have you encountered any physical obstructions like roots, trees, branches, bushes, retaining walls, sign, fire hydrants or other?

- No

Survey Connect Response #24

Date Received: 11/13/2018

Have you experienced physical barriers or constraints on a pedestrian path you currently use or would like to use?

- Yes
- No

Have you encountered street segments or locations where sidewalks are missing, inaccessible or in poor condition?

- No

Have you encountered locations where curb ramps are missing, inaccessible or in poor condition?

- No

Have you encountered intersections or mid-block crossings where medians or traffic signals affect your ability to cross the street?

- No

Have you encountered any physical obstructions like roots, trees, branches, bushes, retaining walls, sign, fire hydrants or other?

- No

Do you have any more specific or general comments that you feel the ADA Transition Plan Team should consider related to pedestrian facilities?

I would not waste any money or resources on this. It is fine the way it is.

Survey Connect Response #25

Date Received: 11/13/2018

Have you experienced physical barriers or constraints on a pedestrian path you currently use or would like to use?

- No

Do you have any more specific or general comments that you feel the ADA Transition Plan Team should consider related to pedestrian facilities?

No

Survey Connect Response #26

Date Received: 11/19/2018

Have you experienced physical barriers or constraints on a pedestrian path you currently use or would like to use?

- No

Do you have any more specific or general comments that you feel the ADA Transition Plan Team should consider related to pedestrian facilities?

I recommend recruiting people with disabilities to travel about the district to provide first-hand input on where improvements can be made. There's no substitute for real-life experience in this realm of accommodation. Thank you for your work in this area.

Survey Connect Response #27

Date Received: 1/18/2019

Have you experienced physical barriers or constraints on a pedestrian path you currently use or would like to use?

- Yes

Have you encountered street segments or locations where sidewalks are missing, inaccessible or in poor condition?

- Yes

If yes, please provide the street name(s), segment(s) of street, side(s) of street and describe your concerns:

Pine from Parker Core Knowledge school to the Parker Library.

Have you encountered locations where curb ramps are missing, inaccessible or in poor condition?

- No

Have you encountered intersections or mid-block crossings where medians or traffic signals affect your ability to cross the street?

- No

Have you encountered any physical obstructions like roots, trees, branches, bushes, retaining walls, sign, fire hydrants or other?

- Yes

Do you have any more specific or general comments that you feel the ADA Transition Plan Team should consider related to pedestrian facilities?

I would like to see Parker become a more walkable/accessible town.

Survey Connect Response #28

Date Received: 1/18/2019

Have you experienced physical barriers or constraints on a pedestrian path you currently use or would like to use?

- Yes

Have you encountered street segments or locations where sidewalks are missing, inaccessible or in poor condition?

- No

Have you encountered locations where curb ramps are missing, inaccessible or in poor condition?

- No

Have you encountered intersections or mid-block crossings where medians or traffic signals affect your ability to cross the street?

- Yes

If yes, please provide intersecting street names, location(s) and describe your concerns:

Between Low Meadow Blvd and Night Song Way in the Meadows there are cars that speed excessively and there is no light to cross safely with our special needs, autistic daughter.

Have you encountered any physical obstructions like roots, trees, branches, bushes, retaining walls, sign, fire hydrants or other?

- No

Survey Connect Response #29

Date Received: 1/18/2019

Have you experienced physical barriers or constraints on a pedestrian path you currently use or would like to use?

- No

Do you have any more specific or general comments that you feel the ADA Transition Plan Team should consider related to pedestrian facilities?

Although I feel transitioning existing infrastructure to meet ADA needs is important, I think there are much higher infrastructure needs (like more turn lanes or road repairs) to be spending our tax dollars upon. Convert curb ramps whenever other sidewalk repairs are needed.

Survey Connect Response #30

Date Received: 1/18/2019

Have you experienced physical barriers or constraints on a pedestrian path you currently use or would like to use?

- Yes

Have you encountered street segments or locations where sidewalks are missing, inaccessible or in poor condition?

- No

Have you encountered locations where curb ramps are missing, inaccessible or in poor condition?

- Yes

If yes, please provide intersecting street names, location(s) and describe your concerns:

Rec Center accessible parking has spots that have dips once a car is parked so if trying to get a wheelchair out of the back of a vehicle, the dip can cause someone to lose their balance. Areas behind vehicles should be flat.

Have you encountered intersections or mid-block crossings where medians or traffic signals affect your ability to cross the street?

- Yes

If yes, please provide intersecting street names, location(s) and describe your concerns:

The lights at most intersections are too short for someone to cross if the person can't walk as fast as others. Downtown is concerning because it is an area that should be able to be covered by foot especially given the limited downtown parking.

Have you encountered any physical obstructions like roots, trees, branches, bushes, retaining walls, sign, fire hydrants or other?

- No

Do you have any more specific or general comments that you feel the ADA Transition Plan Team should consider related to pedestrian facilities?

Downtown Parker does not have enough spots for accessible parking. Whenever I am downtown there is no parking.



Thanksgiving

Douglas County offices will be closed Nov. 22 & Nov. 23 for the Thanksgiving Holiday. Many county services are available online at www.douglas.co.us



County seeks public input on ADA Plan

Are you or someone close to you interested in what the County is doing to improve access for persons with disabilities to pedestrian facilities (sidewalks, curb ramps, and roadway crossings) within the public right-of-way? Douglas County is offering two ways to engage: an online survey and a Nov. 27 public open house. Visit www.douglas.co.us and search for **ADA Transition** for more information.



Apply for 2019 Community Safety Volunteer Academy

The nine-week Academy is offered by the Douglas County Sheriff's Department. Deadline for applications is December 27, 2018. For more information visit www.dcsheriff.net and search for **CSV Academy**.



Interested in becoming a foster parent or adopting a child?

Attend a free information session from 6-7:30 p.m., Monday, Dec. 17 at Charles Schwab, 900 Schwab Way in Lone Tree. For more information please call 303-636-1KID or to register online visit www.collaborativefostercare.com



Funds available to serve at-risk Veterans

Emergency assistance is available to veterans struggling with housing (mortgage/rent) transportation, employment, healthcare or other emergency needs. To apply for the veterans assistance funds visit www.douglasveterans.org or call 303-663.6200.

Douglas County Needs You!

Share your talent and expertise on one of our many Citizen Advisory Boards, Committees or Commissions. Applications being accepted for:

- Library Board of Trustees
- Historic Preservation Board
- Noxious Weed Advisory Commission
- Veterans Service Officer

www.douglas.co.us search: **Boards and Commissions**

Visit www.douglas.co.us

PUBLIC NOTICE

PUBLIC NOTICE REGARDING DOUGLAS COUNTY'S AMERICANS WITH DISABILITIES ACT (ADA) TRANSITION PLAN FOR PUBLIC RIGHT-OF-WAY

Douglas County has prepared an Americans with Disabilities Act (ADA) Transition Plan for Public Right-of-Way. The purpose of this Transition Plan is to identify facilities, guidelines, standards, policies, procedures, and/or practices currently utilized or recommended for use to minimize or eliminate barriers to accessibility within unincorporated Douglas County's transportation network.

The County invites public review of this document during the **30-day public comment period beginning January 17, 2019, and ending February 15, 2019**. The document and user survey is available on-line at www.douglas.co.us by searching ADA Transition Plan. The document is also available at the Douglas County Department of Public Works Engineering, 100 Third Street, Suite 220, Castle Rock, CO 80104 and at the Douglas County Philip S Miller Public Library, 100 S Wilcox Street, Castle Rock, CO 80104. In addition, the document and user survey will be available during an **Open House public meeting scheduled on January 30, 2019**, from 4 – 6 p.m., at the Douglas County Government Administration Building, in the first floor Hearing Room, 100 Third Street, in Castle Rock.

Interpreters or special needs accommodations can be provided with advance notice by contacting Carol Konecny, Douglas County Department of Public Works Engineering, at 303-660-7490 or ckonecny@douglas.co.us.

NEWS-PRESS

First Publication: 01/17/2019

Last Publication: 01/24/2019

Account Number: 00012184

County offers thanks for initial public input on ADA Transition Plan for Public Right-of-Way

*Officials seek additional public feedback on the draft plan at Jan. 30 open house and via an online survey
Published on January 18, 2019 in [2019](#), [Breaking News](#) & [Personal and Public Safety](#)*



Your voice will continue to help persons with disabilities in Douglas County during the next step in finalizing the County's Americans with Disabilities Act (ADA) Transition Plan for Public Right-of-Way.

Input on the final draft of the Plan is welcome during an open house on Wednesday, January 30, from 4-6 p.m., at the Philip S. Miller Building, Commissioners' Hearing Room, 100 Third Street, Castle Rock, CO 80104. Comments may also be [submitted online](#) or through the [ADA Transition Plan Citizen Survey](#) through February 15.

"The County's draft Plan identifies procedures for implementing the Plan, removing barriers and promoting accessibility in the public right-of-way," said County Commissioner and Board co-chair Roger Partridge. "We look forward to receiving additional public input."

As part of an Americans with Disabilities Act (ADA) Transition Plan process, Douglas County heard from and listened to citizens in November 2018 through an online survey and an open house. Feedback identified areas to invest in repair, construction or improvement of sidewalks, curb ramps, roadway crossings and other areas of public right-of-way in unincorporated Douglas County.

Since then, the County incorporated citizen input in a final draft of the ADA Transition Plan for unincorporated Douglas County, [now available for public review on the Douglas County website](#) and at the Douglas County Philip S. Miller Library, 100 S. Wilcox Street, Castle Rock, CO 80104. The document is also available at the Douglas County Department of Public Works Engineering, 100 Third Street, Castle Rock, CO 80104.

During the open house, interpreters or special needs accommodations can be provided with advanced notice by contacting Carol Konecny, Douglas County Department of Public Works Engineering, at 303-660-7490 or ckonecny@douglas.co.us.

Formal adoption of the ADA Transition Plan will occur in March 2019 and will be available on the Douglas County website and by written formal request to the ADA Coordinator.

Comment Form

Do you have any comments or questions about the ADA Transition Plan?

If so, we would like to hear from you.

Please write your comments in the space below and return them to Douglas County Department of Public Works Engineering. You can drop this form off on your way out, or you may take it with you and mail later.

Thank you for your participation!

Carol Konecny

Douglas County Department of Public Works Engineering

100 Third Street

Castle Rock, CO 80104

Phone: 303.660.7490

Email: engineering@douglas.co.us

If you are willing, please provide your complete contact information to allow us to follow-up with you on any questions or concerns:

Name _____
Address _____
City _____ Zip _____
Email _____
Phone _____

Thank you for your interest and participation!

APPENDIX H – COMPLAINT & GRIEVANCE PROCEDURES

Douglas County Grievance Procedure under the Americans with Disabilities Act

This grievance procedure is established to meet the requirements of the Americans with Disabilities Act of 1990 ("ADA"). It may be used by anyone who wishes to file a complaint alleging discrimination on the basis of disability in the provision of Douglas County services, activities, programs or facilities.

The complaint should be **in writing** and include information such as name, address, phone number, location, date and description of the alleged discrimination. Alternative means of filing complaints, such as personal interviews or a tape recording of the complaint will be made available for persons with disabilities upon request. Copies of complaints will be retained by Douglas County for three years plus current.

The complaint should be submitted by the complainant as soon as possible, but no later than 60 calendar days after the alleged discrimination to:

ADA Coordinator
Holly Carrell, Special Projects Manager
100 Third Street, Castle Rock, CO 80104
ADACoordinator@douglas.co.us
(303) 660-7401

Within 15 calendar days after receipt of the complaint, the ADA Coordinator or his/her designee will meet with the complainant to discuss the complaint and possible resolution. Within 30 calendar days of receipt of the complaint, the ADA Coordinator or his/her designee will respond in writing, and, where appropriate, in a format accessible to the complainant. The response will explain the position of Douglas County and offer options for substantive resolution of the complaint.

If the response by the ADA Coordinator or his/her designee does not satisfactorily resolve the issue, the complainant may appeal the decision within 15 calendar days after receipt of the response to the County Manager. Appeals should include any additional information for review and reason for reconsideration.

Within 15 calendar days after receipt of the appeal, the County Manager will meet with the complainant to discuss the complaint and possible resolution. Within 30 calendar days after receipt of the appeal, the County Manager will respond in writing, and, where appropriate, in a format accessible to the complainant, with a final resolution of the complaint.

APPENDIX I – ADA DESIGN AND CONSTRUCTION EXCEPTION FORM



ADA Design and Construction Exception Form

Please fill out this form completely if an element of new construction or alteration to an existing facility seemingly cannot meet the ADA requirements or creates undue financial or administrative burden and return to the ADA Coordinator / Douglas County Department of Public Works Engineering at:

100 Third Street
Castle Rock, CO 80104

This form applies to facilities located in public right-of-way of unincorporated Douglas County or property owned by Douglas County.

Project: _____

County Project No.: _____ Location/Intersection: _____

New Construction: ☐ Alteration to Existing Facility: ☐

ADA requirement seemingly not being satisfied or creating undue burden: _____

Reason for perceived non-compliance: _____

Reasonable accommodation provided: _____

Sketch of area (if needed) or indicate if attached ☐

TWO DOUGLAS COUNTY SIGNATURES ARE REQUIRED

County Representative/Title: _____ Date: _____

County Representative/Title: _____ Date: _____

If you have questions about this form, please contact Douglas County Public Works Engineering at 303.660.7490.

Ref: #2019019567, Date: 4/15/2019 12:37 PM,
Pages: 1 of 4,
Douglas County, CO. Merlin Klotz, Clerk and Recorder

RESOLUTION NO. R-019-043

THE BOARD OF COUNTY COMMISSIONERS
OF THE COUNTY OF DOUGLAS, COLORADO

A RESOLUTION ADOPTING THE AMERICANS WITH DISABILITIES ACT (ADA)
STANDARDS FOR PUBLIC RIGHTS-OF-WAY ACCESSIBILITY GUIDELINES

WHEREAS, the Federal government mandates that recipients of financial assistance from the Federal Highway Administration ("FHWA"), an operating administration of the United States Department of Transportation, follow the Americans with Disabilities Act Accessibility Guidelines, as amended, ("ADAAG") when constructing new or altering exiting facilities; and

WHEREAS, FHWA also recommends that such recipients also adopt and follow Public Rights-of-Way Accessibility Guidelines, as amended, ("PROWAG") in order to ensure that pedestrian access to sidewalks and streets, including crosswalks, curb ramps, street furnishings, pedestrian signals, and other components of public rights-of-way are in compliance with ADA requirements; and

WHEREAS, Douglas County desires to formally adopt PROWAG, as amended, and as set forth in Exhibit A, for pedestrian curb ramps as part of the County's continuing effort to implement its ADA Transition Plan and to ensure that Douglas County is in full and continued compliance with the ADA; attached hereto and incorporated herein (with criteria deviations / exceptions listed in Exhibit B); now, therefore,

BE IT RESOLVED, by the BOARD OF COUNTY COMMISSIONERS OF THE COUNTY OF DOUGLAS, STATE OF COLORADO, that Douglas County hereby adopts the 2011 Guidelines for Pedestrian Facilities in the Public Right-of-way (PROWAG), in the form attached hereto as Exhibit A, and any amendments thereto.

PASSED AND ADOPTED this 09 day of April, 2019, in Castle Rock, Douglas County, Colorado.

THE BOARD OF COUNTY COMMISSIONERS
OF THE COUNTY OF DOUGLAS, COLORADO

By:


ROGER A. PARTRIDGE, CHAIR

ATTEST:


EMILY WRENN, DEPUTY CLERK



RESOLUTION NO. R-019-044

THE BOARD OF COUNTY COMMISSIONERS
OF THE COUNTY OF DOUGLAS, COLORADO

A RESOLUTION ADOPTING THE AMERICANS WITH DISABILITIES ACT (ADA)
TRANSITION PLAN FOR PUBLIC RIGHT-OF-WAY

WHEREAS, the Federal government enacted the Americans with Disabilities Act of 1990 (ADA) to prevent discrimination of the physically and mentally disabled relating to employment and access to public facilities; and

WHEREAS, Title II of the ADA requires the development and adoption of a Transition Plan to document physical barriers to accessibility, proposed structural modifications to remove those barriers, and a proposed time schedule for the completion of all required modifications; and

WHEREAS, on April 09, 2019, the Board of County Commissioners of the County of Douglas adopted Resolution No. R-019-049 pertaining to ADA Guidelines for Pedestrian Facilities in the Public Right-of-Way (PROWAG); and

WHEREAS, the Board of County Commissioners of the County of Douglas remain committed to the ADA and the elimination of physical barriers to accessibility in the public right-of-way; and

WHEREAS, a Transition Plan for the transportation network has been prepared and reflects infrastructure and ADA design standards, referred to as the "ADA Transition Plan for Public Right-of-Way"; in the form attached hereto as Exhibit A; now, therefore,

BE IT RESOLVED, by the BOARD OF COUNTY COMMISSIONERS OF THE COUNTY OF DOUGLAS, STATE OF COLORADO, that Douglas County hereby approves the ADA Transition Plan for Public Right-of-Way, as set forth in Exhibit A, attached hereto and incorporated herein.

PASSED AND ADOPTED this 09 day of April, 2019, in Castle Rock, Douglas County, Colorado.

THE BOARD OF COUNTY COMMISSIONERS
OF THE COUNTY OF DOUGLAS, COLORADO

By:


ROGER A. PARTRIDGE, CHAIR

ATTEST:


EMILY WRENN, DEPUTY CLERK

