

# COVID Case Rate



## Cumulative Incidence Rates, January 2020 - Present (per 100,000)

Adams, Arapahoe and Douglas Counties

Adams Incidence	Arapahoe Incidence	Douglas Incidence
1,418.9	1,226.7	586.6

## 14-Day Incidence Rates (per 100,000), Past 14 Days

Adams, Arapahoe and Douglas Counties

Adams 14-Day Incidence	Arapahoe 14-Day Incidence	Douglas 14-Day Incidence
127.9	73.39	46.38

## 14-Day Incidence Rates (per 100,000), Past 14 Days, *Excluding Cases Residing in Congregate Facilities*

Adams, Arapahoe and Douglas Counties

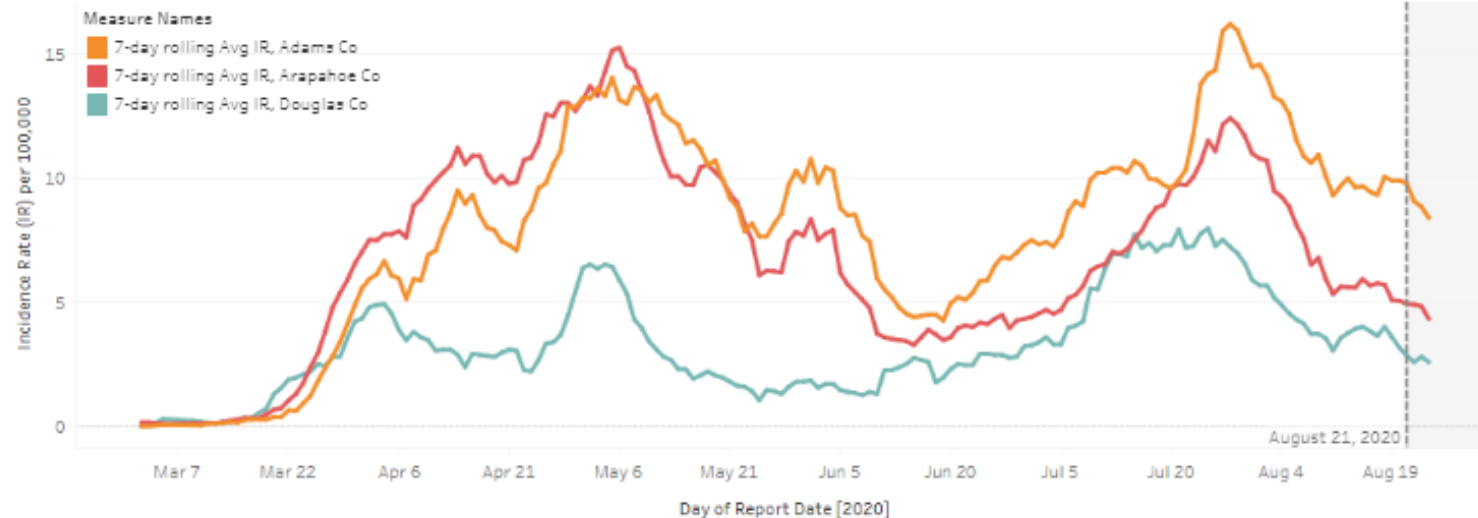
\*Congregate facilities include: correction facilities, long-term care and skilled nursing facilities, treatment centers and rehab facilities

Adams 14-day No outbreak	Arapahoe 14-day No outbreak	Douglas 14-day No outbreak
124.2	72.47	46.38

## Daily Incidence Rates, 7-Day Rolling Average, per 100,000\*

Adams, Arapahoe, and Douglas Counties

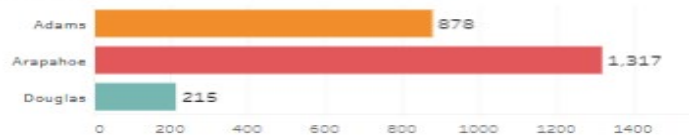
\*Last several days' data may be incomplete due to processing delays (grayed-out area on graph)



# COVID Hospitalizations



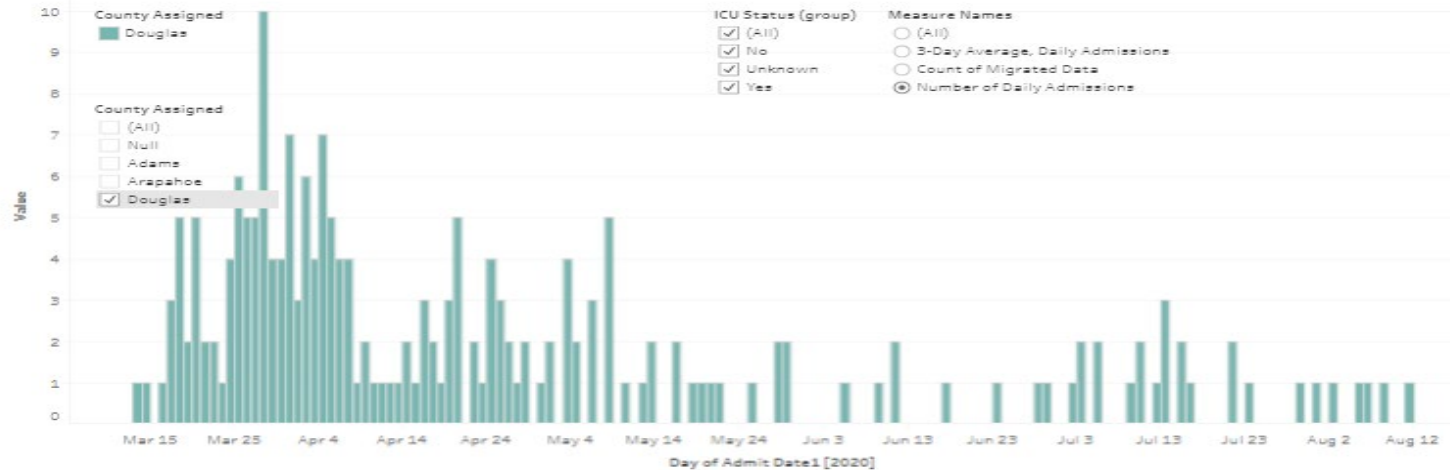
Total Hospitalizations by County



Average Age of Hospitalized Cases, by County

County Assigned	Adams	Arapahoe	Douglas
Average Age	55	57	63

Daily Hospitalizations by County (Date of Admittance)



Number of Hospitalized Cases by Age, by County

Age (group)	County Assigned		
	Adams	Arapahoe	Douglas
<18	15	32	5
18-44	235	309	29
45-64	350	466	74
65-74	152	222	42
75+	126	288	65

Percentage of Hospitalizations by Age, by County

Age (group)	County Assigned		
	Adams	Arapahoe	Douglas
<18	1.7%	2.4%	2.3%
18-44	26.8%	23.5%	13.5%
45-64	39.9%	35.4%	34.4%
65-74	17.3%	16.9%	19.5%
75+	14.4%	21.9%	30.2%

# Slowing the spread of infections using contact tracing

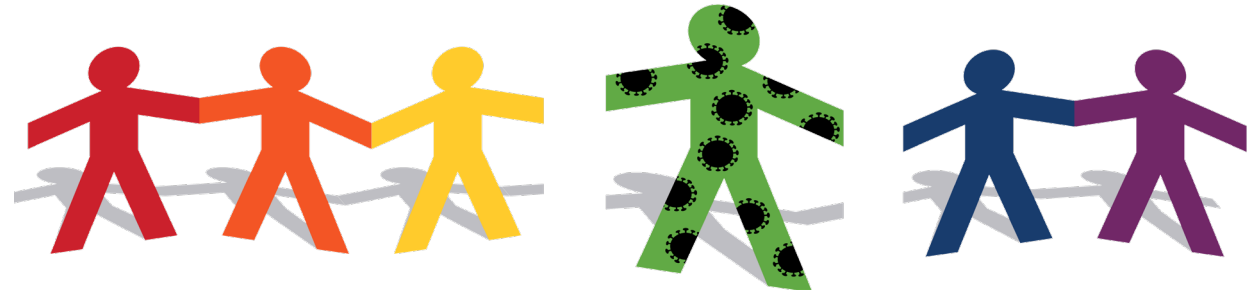
Jennifer Chase, Communicable Disease Epidemiologist



# What is Contact Tracing?



Breaking the chain of transmission by getting those infected by others to stay home preventing them from passing the virus to someone else



Test people to identify people who have COVID-19

Inform people who are infectious to isolate at home

Identify contacts who have been around the person who is positive

Ask contacts to quarantine for 14 days and monitor for symptoms

# Controlling transmission of COVID-19



## Community Intervention

Stay-at-home orders

Teleworking

Closure of non-essential services

Face coverings, washing hands

## Control of Transmission

Testing

Case investigation

Contact tracing

Analyze and report data

## Case Management

Within Households

- Self-isolation
- Self-monitoring
- Self-quarantine

In Healthcare Settings

- Patient isolation
- PPE
- Safety measures

# How are we notified?



Local public health is notified by Colorado Department of Public Health (CDPHE) of a positive test



Case investigators interview people with COVID-19 and will call to go over isolation and home care



Contact tracers will reach out to the contacts to go over quarantine and testing recommendations to contain the spread of the virus

# Information collected



## Some questions we ask are:

- Can you verify your name, address, and date of birth?
- Did you develop symptoms since you were exposed?
- What are your symptoms and when did they start?
- What is your occupation?

## Questions scammers ask:

- What is your Social Security Number
- What is your credit card number
- Are you a resident?
- What is your bank account number?

# Privacy concerns

- Our team will connect with you over the phone
- Everything is confidential
- Verify if the caller is from Tri-County Health Department, by calling our call center at 303-220-9200
  - Press option 2, then option 1





# Why you should answer our call?

- Alert friends and loved ones to get the care they need
- Keep the virus from spreading easily
- Allow businesses, schools, and other community organizations to be open as much as possible
- Avoid overwhelming our health care system



# Get tested

Testing will help us you know if you are contagious and confirm when to call you to break the chain

- Get tested as soon as you have symptoms
- Get tested 7 days after you have been around someone with COVID-19



Get COVID-19 resources at  
[www.tchd.org/COVID-19](http://www.tchd.org/COVID-19)

Jennifer Chase, Communicable Disease Epidemiologist

