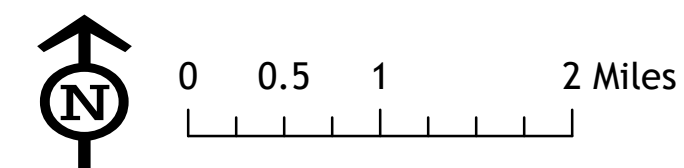


ECONOMIC AREAS

DOUGLAS COUNTY

2023

- Economic Area**
- 1 - Parker
 - 2 - Highlands Ranch & Lone Tree
 - 3 - Roxborough
 - 4 - Castle Rock & Castle Pines
 - 5 - Franktown & Southeast DC
 - 6 - Sedalia & Southwest DC
 - 7 - Forest
- Townships
 Sections
 Parcels



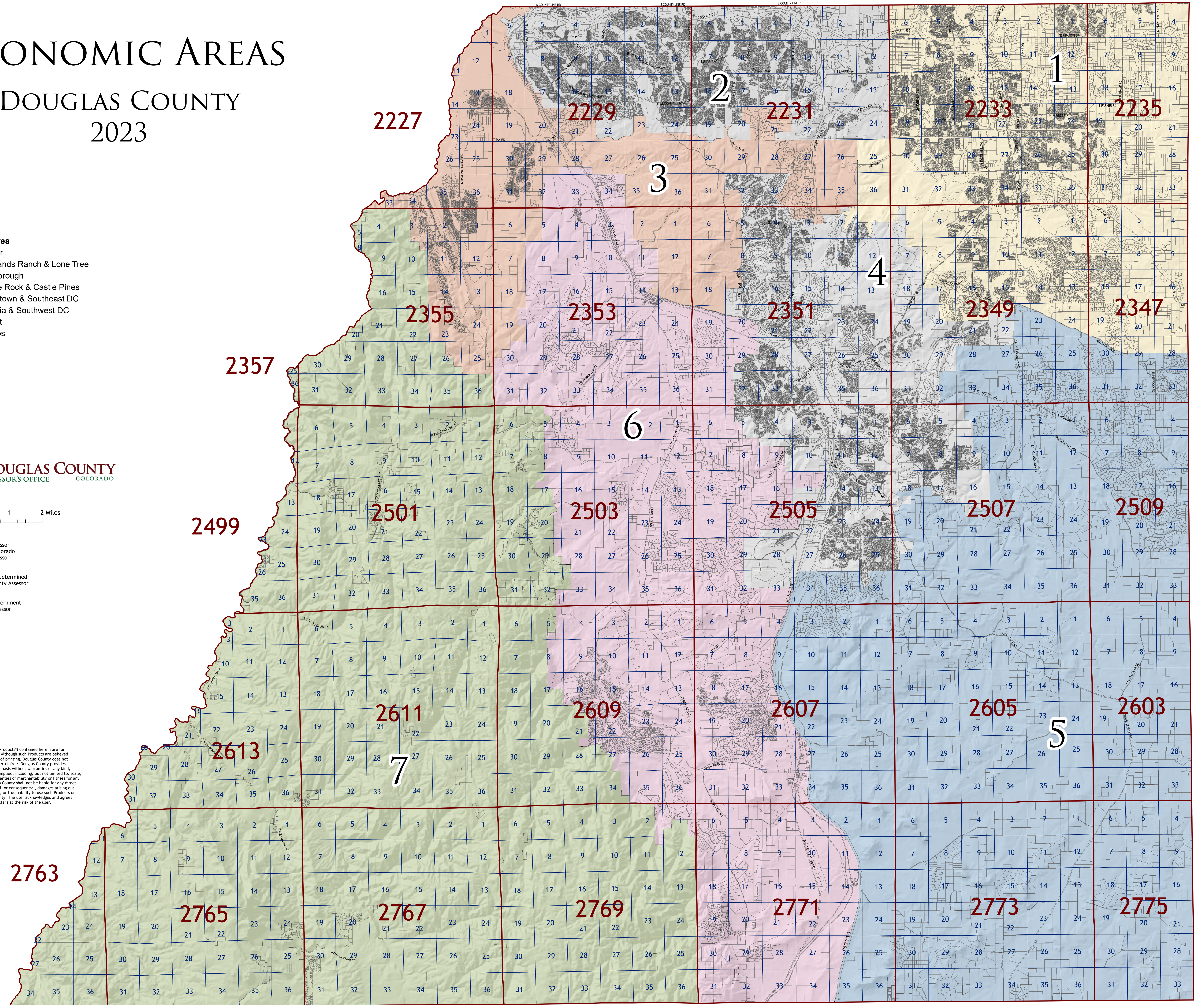
Douglas County Assessor
 Douglas County, Colorado
 Toby Damisch, Assessor

Map Info:
 Economic Areas as determined
 by the Douglas County Assessor

Data Source:
 Douglas County Government
 Douglas County Assessor

Map Date:
 April 7, 2023

Disclaimer:
 All data and information ("Products") contained herein are for
 information purposes only. Although such Products are believed
 to be accurate at the time of printing, Douglas County does not
 warrant such products are error free. Douglas County provides
 these Products on an "as is" basis without warranties of any kind,
 either expressly stated or implied, including, but not limited to, scale,
 warranties of title, or warranties of merchantability or fitness for any
 particular purpose. Douglas County shall not be liable for any direct,
 indirect, incidental, special, or consequential damages arising out
 of the use of such products, or the inability to use such Products or
 out of any breach of warranty. The user acknowledges and agrees
 that the use of such Products is at the risk of the user.



R71W

R70W

R69W

R68W

R67W

R66W

R65W

16S

17S

18S

19S

20S