



# GATEWAY MESA

O P E N S P A C E



**This 1.8-mile, soft-surface Chuck's Loop Trail segment connects to the Mitchell Creek Canyon Trail system in the Founders area.**

The property is on a bluff, with steep, rock-capped cliffs on the eastern portion overlooking Franktown and the Cherry Creek Valley to the east. The property has expansive views of the Rocky Mountains extending from Pikes Peak on the south to Longs Peak on the northwest.

Parking for the trail is in a dirt lot on the east side of Colorado Highway 86.

Beware of steep cliffs and rattlesnakes while enjoying this trail.

Note: Due to permanent conservation use restrictions placed on the property, mountain bikes and horses are *not allowed* on the trail.

Trail usage is for hikers only. Mountain bikes, technical rock climbing and horses are prohibited on Gateway Mesa Open Space. Mountain biking and horses are allowed at the nearby Hidden Mesa Open Space (managed by Douglas County). That trailhead is on Colorado Highway 83 (Parker Road), 1 mile north of Franktown.

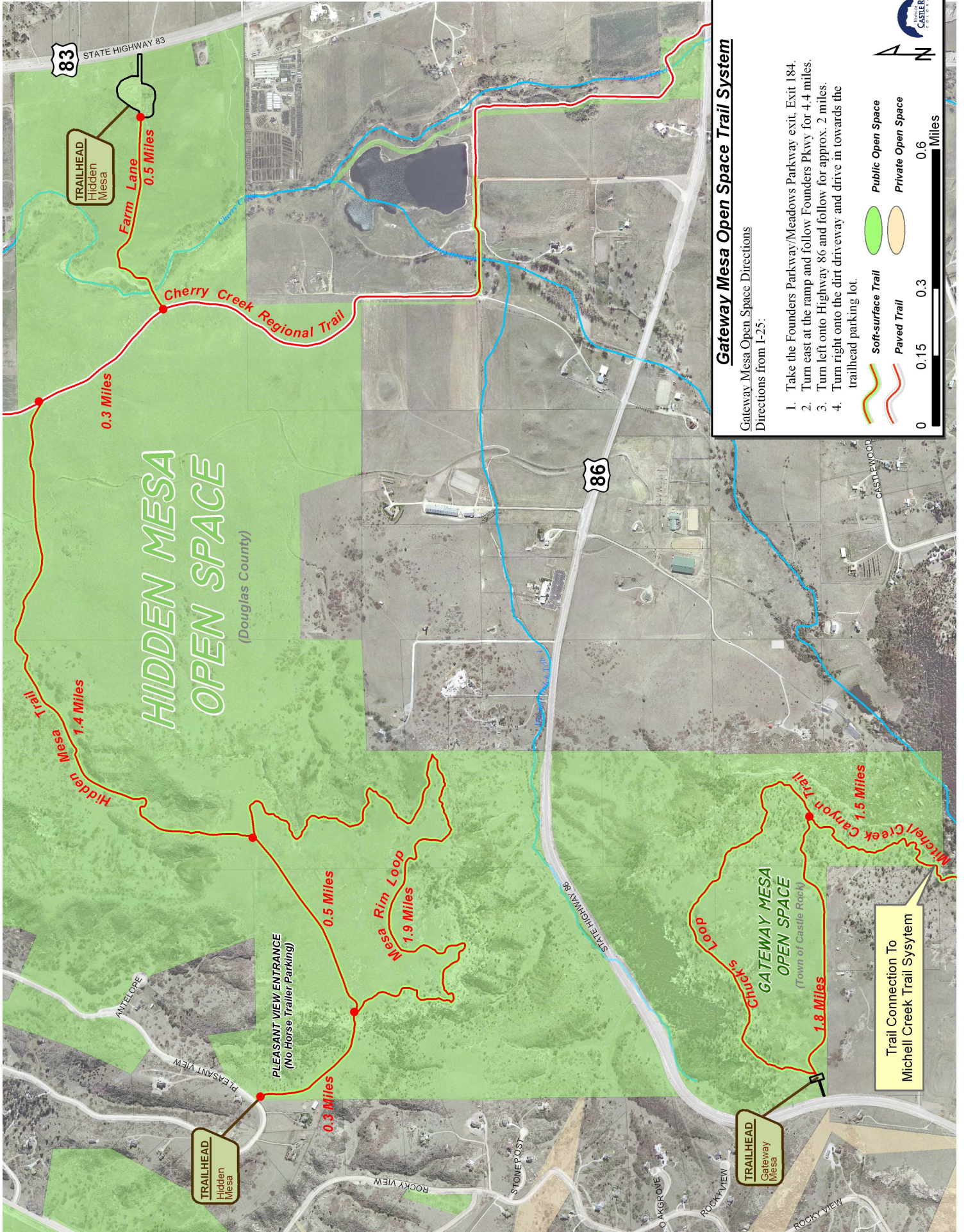
Gateway Mesa Open Space is available for adoption through the POST Partners volunteer program. Call the number to the left for details.

See the back for directions and a map.

[www.CRgov.com/parks](http://www.CRgov.com/parks)  
303-814-7444







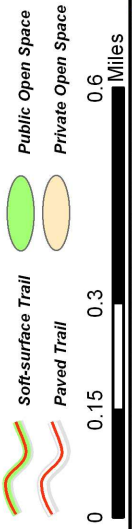
# HIDDEN MESA OPEN SPACE

(Douglas County)

## Gateway Mesa Open Space Trail System

Gateway Mesa Open Space Directions  
Directions from I-25:

1. Take the Founders Parkway/Meadows Parkway exit, Exit 184.
2. Turn east at the ramp and follow Founders Parkway for 4.4 miles.
3. Turn left onto Highway 86 and follow for approx. 2 miles.
4. Turn right onto the dirt driveway and drive in towards the trailhead parking lot.



Trail Connection To  
Mitchell Creek Trail System

