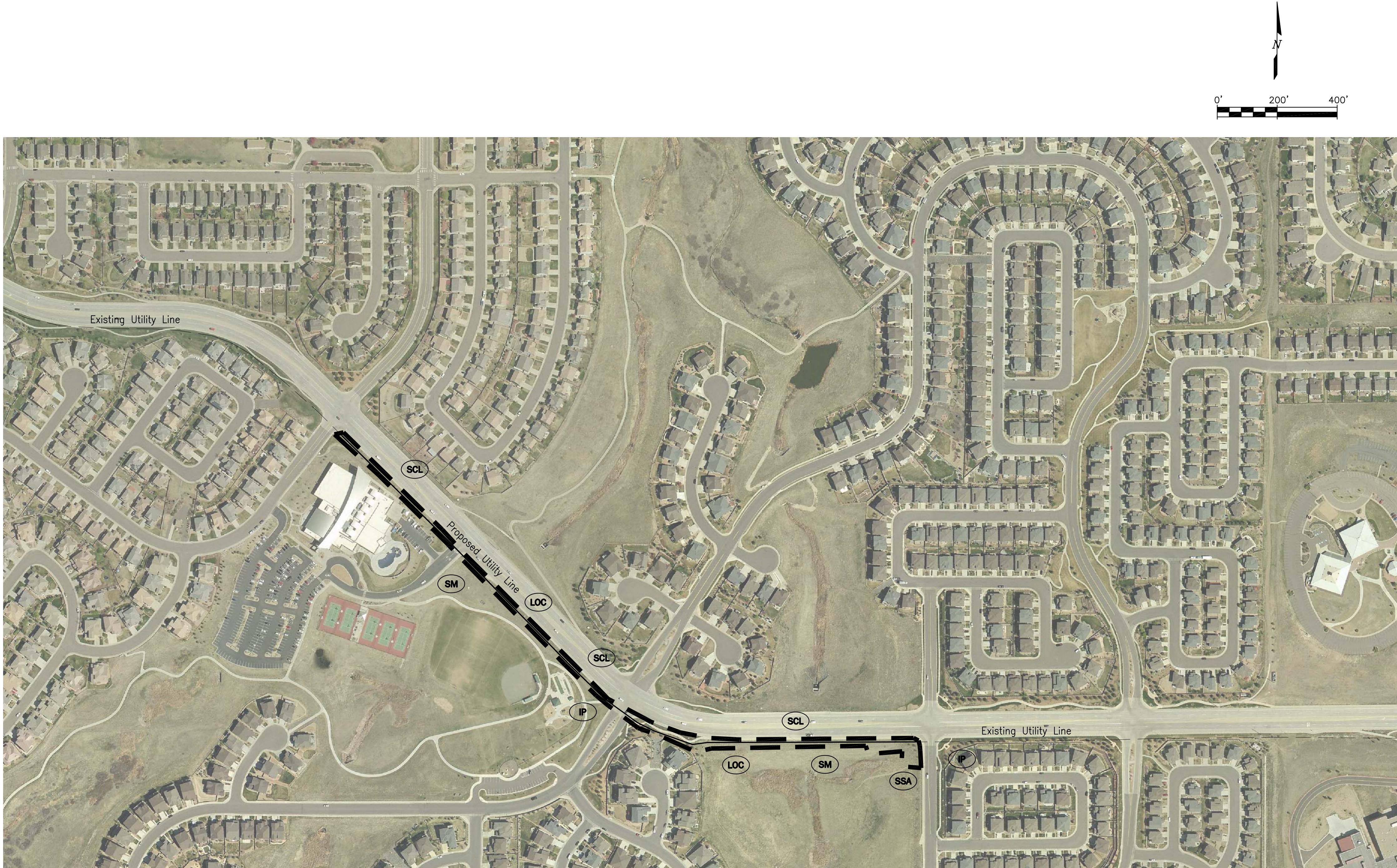


EXAMPLE SMALL UTILITY GESC DRAWING



BMP LEGEND

- CD** CHECK DAM
- CB** COMPOST BLANKET
- CFB** COMPOST FILTER BERM
- CWA** CONCRETE WASHOUT AREA
- CF** CONSTRUCTION FENCE
- CM** CONSTRUCTION MARKER
- DW** DEWATERING
- DD** DIVERSION DITCH
- ECB** EROSION CONTROL BLANKET
- IP** INLET PROTECTION
- RCD** REINFORCED CHECK DAM
- RRB** REINFORCED ROCK BERM
- RRC** RRB FOR CULVERT PROTECTION
- SB** SEDIMENT BASIN
- SCL** SEDIMENT CONTROL LOG
- ST** SEDIMENT TRAP
- SM** SEEDING AND MULCHING
- SF** SILT FENCE
- SSA** STABILIZED STAGING AREA
- SR** SURFACE ROUGHENING
- TSD** TEMPORARY SLOPE DRAIN
- TSC** TEMPORARY STREAM CROSSING
- TER** TERRACING
- VTC** VEHICLE TRACKING CONTROL
- WW** VTC WITH WHEEL WASH
- ROCK AND RIPRAP GRADATIONS
- LOC** LIMITS OF CONSTRUCTION

- EXISTING 2' CONTOUR
- EXISTING 10' CONTOUR
- PROPOSED 2' CONTOUR
- PROPOSED 10' CONTOUR
- FLOW DIRECTION ARROW
- AREA OUTSIDE LIMITS OF CONSTRUCTION
- AREA TO BE DRILL SEEDED AND CRIMP MULCHED.

NOTES:
1.) CONTROL POINT NO. 1: 3" BRASS CAP ON SOUTH CORNER OF WEST HEADWALL, USGS ELEVATION 5628.23.
2.) SEE CONSTRUCTION PLANS FOR DETAILS OF PERMANENT DRAINAGE FACILITIES SUCH AS DETENTION FACILITIES, CULVERTS, STORM DRAINAGE AND INLET AND OUTLET PROTECTION.

ASSISTANT DIRECTOR OF DEVELOPMENT REVIEW
DATE
THESE CONSTRUCTION DRAWINGS HAVE BEEN REVIEWED BY DOUGLAS COUNTY FOR GRADING, EROSION AND SEDIMENT CONTROL IMPROVEMENTS ONLY.
ENGINEERING DIVISION ACCEPTANCE BLOCK

<div>000</div>	Sheet Revisions			AUSTIN ENGINEERING CO., INC. CONSULTING ENGINEERS 88 PLAZA DRIVE, SUITE 200 HIGHLANDS RANCH, COLORADO 80126 (303) 324-4897 FAX: (303) 324-4991	JAMESTOWN UTILITY COMPANY 7901 GRANT STREET DENVER, COLORADO 80229 (303) 287-1722 FAX: (303) 289-1084	UTILITY LINE	SMALL UTILITY GESC DRAWING	DRAWING E-1