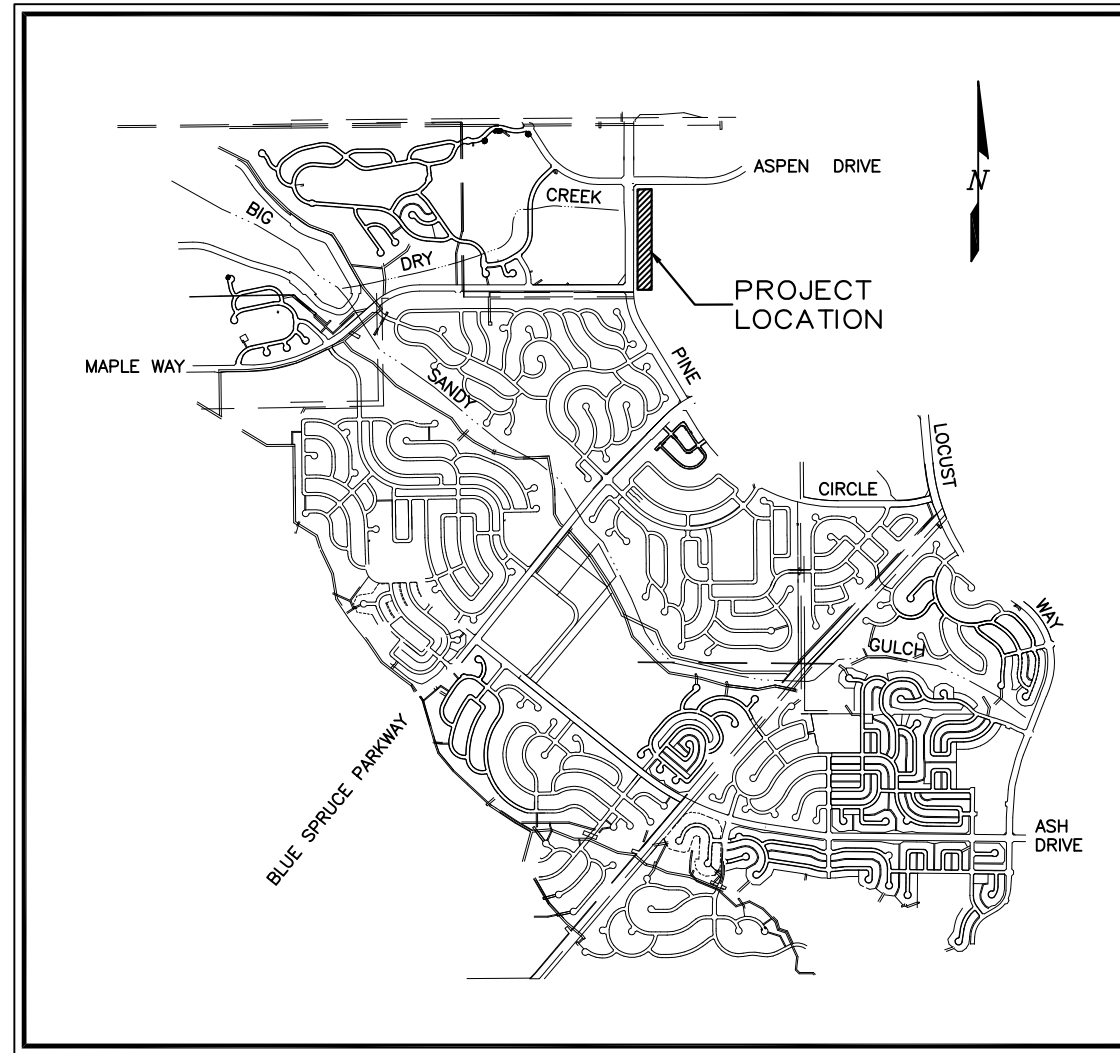


CONTRACT DRAWINGS FOR CONSTRUCTION OF
**UTILITY
 GRADING, EROSION AND SEDIMENT CONTROL PLAN**

EXAMPLE
DOUGLAS COUNTY
UTILITY GESC DRAWINGS



PROJECT LOCATION: SOUTHWEST QUARTER OF SECTION 9
TOWNSHIP 6S, RANGE 68W

LOCATION MAP
SCALE 1"=1500'

**CALL UTILITY NOTIFICATION
CENTER OF COLORADO**

1-800-922-1987

CALL 2-BUSINESS DAYS IN ADVANCE
BEFORE YOU DIG, GRADE, OR EXCAVATE
FOR THE MARKING OF UNDERGROUND
MEMBER UTILITIES.

LIST OF DRAWINGS		
SHEET	DRAWING NO	TITLE
GENERAL DRAWINGS		
1	G-1	COVER SHEET
GESC DRAWINGS		
2	U-1	UTILITY GESC PLAN
3	U-2	UTILITY GESC PLAN
GESC STANDARD NOTES AND DETAILS		
4	SHEET 1	GESC GENERAL NOTES AND LEGEND
5 - 16	SHEETS 2 - 13	GESC DETAILS AND INSTALLATION AND MAINTENANCE NOTES
17	SHEETS 14	ROCK AND RIPRAP GRADATIONS

THE GRADING, EROSION AND SEDIMENT CONTROL PLAN INCLUDED HEREIN HAS BEEN PLACED IN THE DOUGLAS COUNTY FILE FOR THIS PROJECT AND APPEARS TO FULFILL APPLICABLE DOUGLAS COUNTY GRADING, EROSION AND SEDIMENT CONTROL CRITERIA. ADDITIONAL GRADING, EROSION AND SEDIMENT CONTROL MEASURES MAY BE REQUIRED OF THE OWNER OR HIS OR HER AGENTS DUE TO UNFORESEEN EROSION PROBLEMS OR IF THE SUBMITTED PLAN DOES NOT FUNCTION AS INTENDED. THE REQUIREMENTS OF THIS PLAN SHALL RUN WITH THE LAND AND SHALL BE THE OBLIGATION OF THE LANDOWNER, OR HIS OR HER DESIGNATED REPRESENTATIVE, UNTIL SUCH TIME AS THE PLAN IS PROPERLY COMPLETED, MODIFIED OR VOIDED.

THE GRADING, EROSION AND SEDIMENT CONTROL PLAN INCLUDED HEREIN HAS BEEN PREPARED UNDER MY DIRECT SUPERVISION IN ACCORDANCE WITH THE REQUIREMENTS OF THE GRADING, EROSION, AND SEDIMENT CONTROL (GESC) MANUAL OF DOUGLAS COUNTY.

GESC PLANS PREPARED BY:

AUSTIN ENGINEERING COMPANY INC. DATE _____ PE NUMBER _____

THE CONSTRUCTION PLANS INCLUDED HEREIN WERE PREPARED UNDER MY DIRECT SUPERVISION IN ACCORDANCE WITH THE REQUIREMENTS OF THE ROADWAY DESIGN AND CONSTRUCTION STANDARDS AND THE STORM DRAINAGE DESIGN AND TECHNICAL CRITERIA OF DOUGLAS COUNTY.

CONSTRUCTION PLANS PREPARED BY:

AUSTIN ENGINEERING COMPANY INC. DATE _____ PE NUMBER _____

ASSISTANT DIRECTOR OF DEVELOPMENT REVIEW

DATE _____

THESE CONSTRUCTION DRAWINGS HAVE BEEN REVIEWED BY DOUGLAS COUNTY FOR GRADING, EROSION AND SEDIMENT CONTROL IMPROVEMENTS ONLY.

ENGINEERING DIVISION ACCEPTANCE BLOCK

Sheet Revisions	

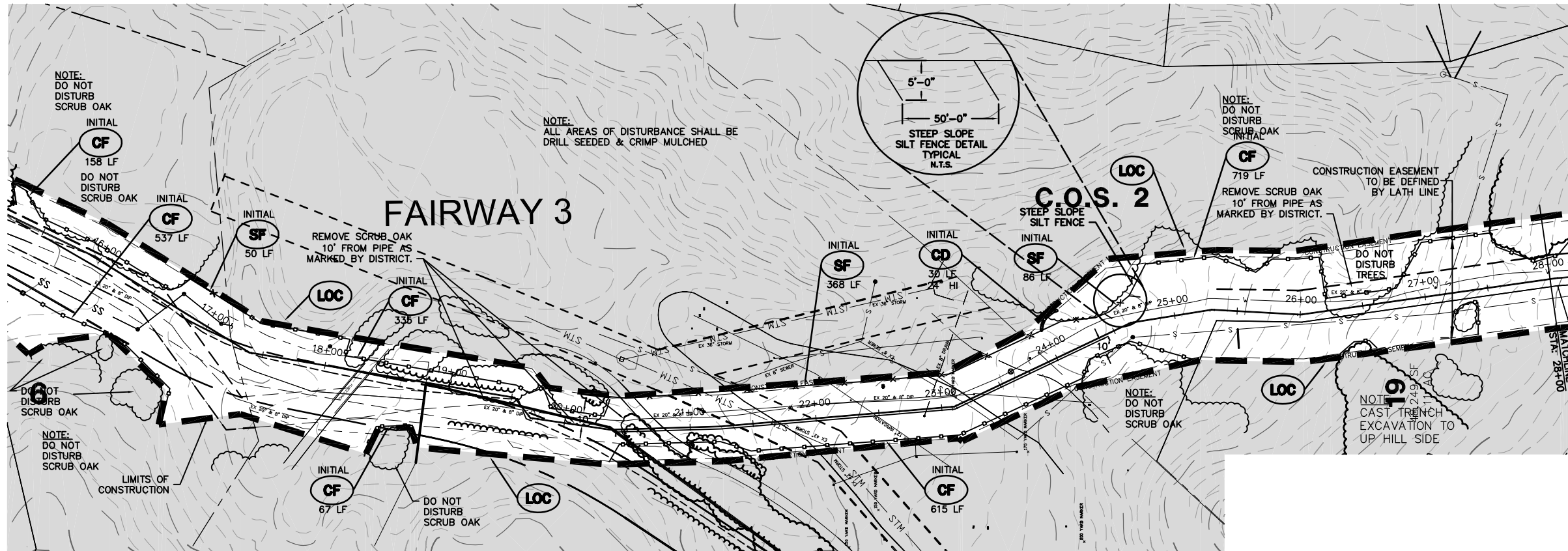
AUSTIN ENGINEERING CO., INC.
CONSULTING ENGINEERS
88 PLAZA DRIVE, SUITE 200
HIGHLANDS RANCH, COLORADO 80126
(303) 324-4897
FAX: (303) 324-4991

JAMESTOWN DEVELOPMENT CO., INC.
7901 GRANT STREET
DENVER, COLORADO 80229
(303) 287-1722
FAX: (303) 289-1084

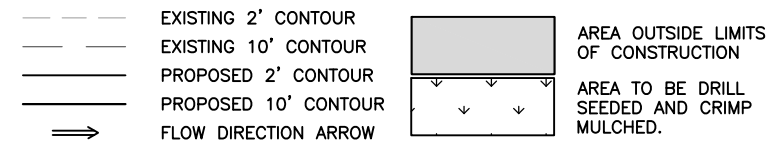
**UTILITY
GESC PLAN**

COVER SHEET

DRAWING
G-1



EXAMPLE
DOUGLAS COUNTY
UTILITY GESC DRAWINGS



- NOTES:**
- 1.) SEE COVER SHEET OF DOUGLAS COUNTY STANDARD NOTES AND DETAILS (SHEET 1 OF 14) FOR LEGEND OF BMP NAMES AND SYMBOLS.
 - 2.) CONTROL POINT NO. 1: 3" BRASS CAP ON SOUTH CORNER OF WEST HEADWALL, USGS ELEVATION 5628.23.
 - 3.) SEE CONSTRUCTION PLANS FOR DETAILS OF PERMANENT DRAINAGE FACILITIES SUCH AS DETENTION FACILITIES, CULVERTS, STORM DRAINAGE AND INLET AND OUTLET PROTECTION.

**CALL UTILITY NOTIFICATION
CENTER OF COLORADO
1-800-922-1987**

CALL 2-BUSINESS DAYS IN ADVANCE BEFORE YOU DIG, GRADE, OR EXCAVATE FOR THE MARKING OF UNDERGROUND MEMBER UTILITIES.

ASSISTANT DIRECTOR OF DEVELOPMENT REVIEW
DATE
THESE CONSTRUCTION DRAWINGS HAVE BEEN REVIEWED BY DOUGLAS COUNTY FOR GRADING, EROSION AND SEDIMENT CONTROL IMPROVEMENTS ONLY.
ENGINEERING DIVISION ACCEPTANCE BLOCK

Sheet Revisions	

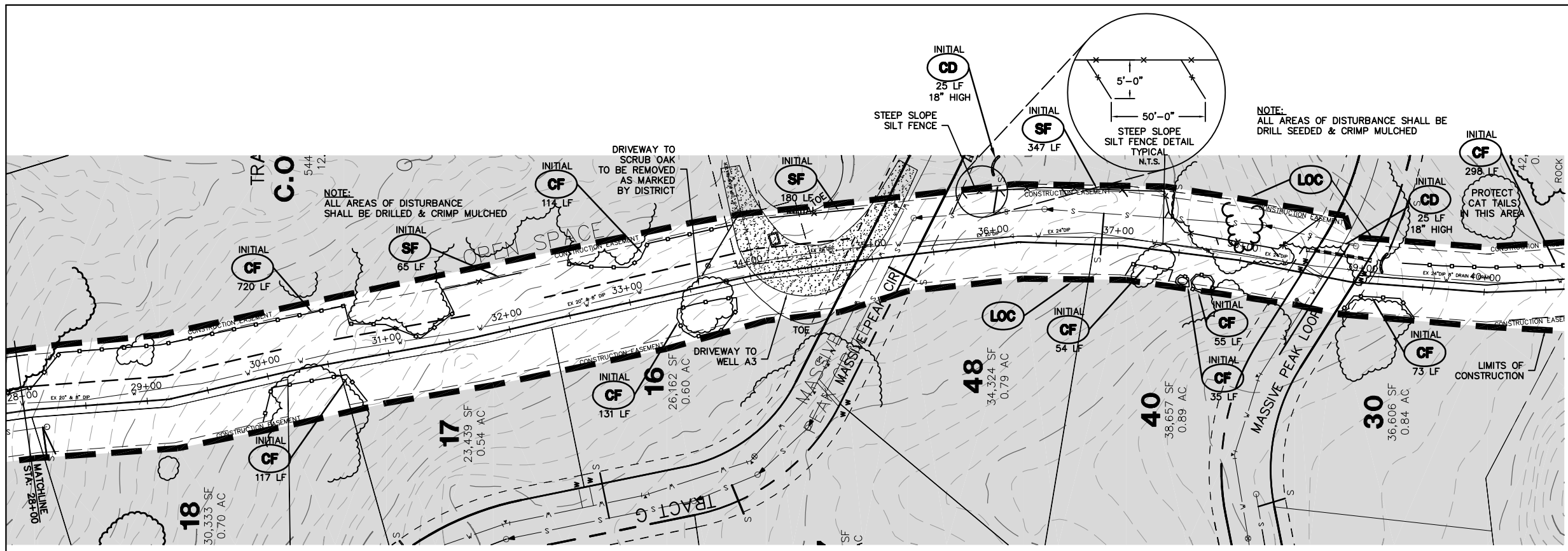
AUSTIN ENGINEERING CO., INC.
CONSULTING ENGINEERS
88 PLAZA DRIVE, SUITE 200
HIGHLANDS RANCH, COLORADO 80126
(303) 324-4897
FAX: (303) 324-4991

JAMESTOWN DEVELOPMENT CO., INC.
7901 GRANT STREET
DENVER, COLORADO 80229
(303) 287-1722
FAX: (303) 289-1084

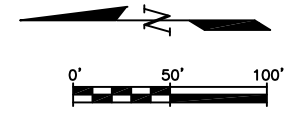
**UTILITY
GESC PLAN**

**WATERLINE
PLAN**

DRAWING
U-1

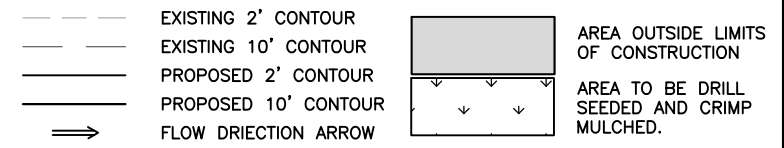


NOTE
CAST TRENCH
EXCAVATION TO
UP HILL SIDE



NOTE
CAST TRENCH
EXCAVATION TO
UP HILL SIDE

EXAMPLE
DOUGLAS COUNTY
UTILITY GESC DRAWINGS



- NOTES:**
- SEE COVER SHEET OF DOUGLAS COUNTY STANDARD NOTES AND DETAILS (SHEET 1 OF 14) FOR LEGEND OF BMP NAMES AND SYMBOLS.
 - CONTROL POINT NO. 1: 3" BRASS CAP ON SOUTH CORNER OF WEST HEADWALL, USGS ELEVATION 5628.23.
 - SEE CONSTRUCTION PLANS FOR DETAILS OF PERMANENT DRAINAGE FACILITIES SUCH AS DETENTION FACILITIES, CULVERTS, STORM DRAINAGE AND INLET AND OUTLET PROTECTION.

**CALL UTILITY NOTIFICATION
CENTER OF COLORADO
1-800-922-1987**

CALL 2-BUSINESS DAYS IN ADVANCE BEFORE YOU DIG, GRADE, OR EXCAVATE FOR THE MARKING OF UNDERGROUND MEMBER UTILITIES.

ASSISTANT DIRECTOR OF DEVELOPMENT REVIEW
DATE
THESE CONSTRUCTION DRAWINGS HAVE BEEN REVIEWED BY DOUGLAS COUNTY FOR GRADING, EROSION AND SEDIMENT CONTROL IMPROVEMENTS ONLY.
ENGINEERING DIVISION ACCEPTANCE BLOCK

Sheet Revisions	

AUSTIN ENGINEERING CO., INC.
CONSULTING ENGINEERS
88 PLAZA DRIVE, SUITE 200
HIGHLANDS RANCH, COLORADO 80126
(303) 324-4897
FAX: (303) 324-4991

JAMESTOWN DEVELOPMENT CO., INC.
7901 GRANT STREET
DENVER, COLORADO 80229
(303) 287-1722
FAX: (303) 289-1084

**UTILITY
GESC PLAN**

**WATERLINE
PLAN**

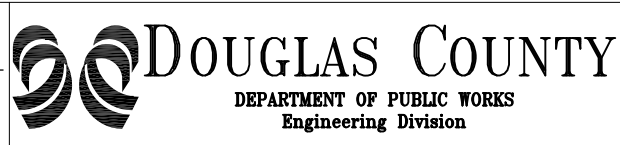
DRAWING
U-2

DOUGLAS COUNTY STANDARD GESC NOTES AND DETAILS TO GO HERE

C:\Land Projects 2009\GESC_Manual.dwg\UTIL-NOTES.dwg, 1/10/2013 3:54:43 PM, 1:1.98233

Sheet Revisions	
00	
00	
00	
00	

NOTE: SCALES SHOWN ARE FOR 22"x34" SHEETS; ADJUST ACCORDINGLY FOR 11"x17" SHEETS.



GESC GRADING, EROSION, AND SEDIMENT CONTROL

GESC PLAN STANDARD NOTES AND DETAILS

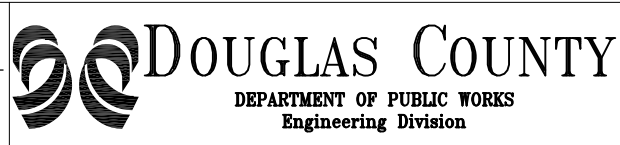
SHEET 1 OF 3

DOUGLAS COUNTY STANDARD GESC NOTES AND DETAILS TO GO HERE

C:\Land Projects 2009\GESC_Manual.dwg UTIL-NOTES.dwg, 1/10/2013 3:54:43 PM, 1:1.98233

Sheet Revisions	
00	
00	
00	

NOTE: SCALES SHOWN ARE FOR 22"x34" SHEETS; ADJUST ACCORDINGLY FOR 11"x17" SHEETS.



GESC GRADING, EROSION, AND SEDIMENT CONTROL

GESC PLAN STANDARD NOTES AND DETAILS

SHEET 1 OF 3