

I-25 Happy Canyon Wildlife Improvements

Milepost 192.0-184.4

Wildlife Fence Alignment Alternatives

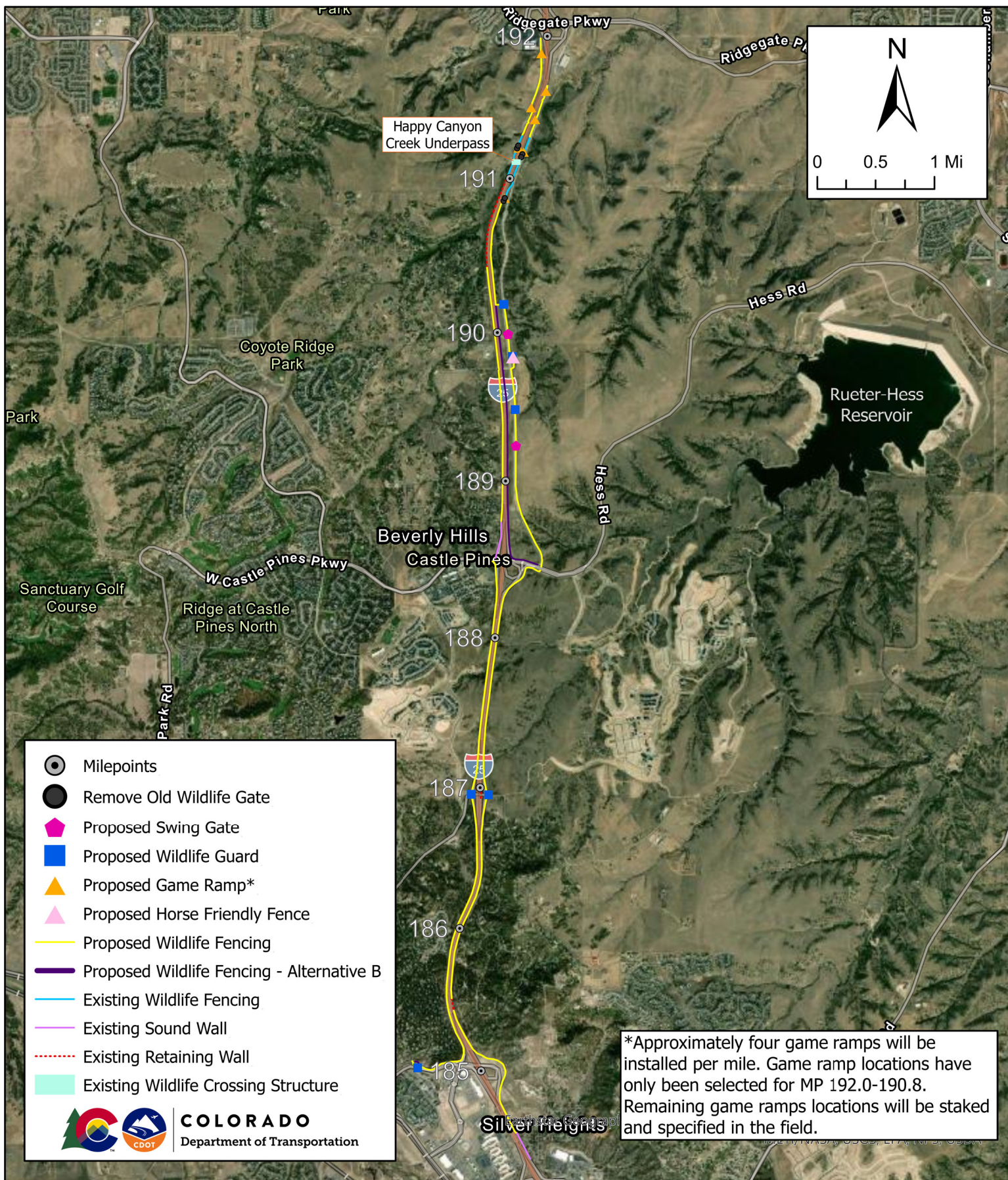


Prepared by:
Colorado Department of Transportation Region 1



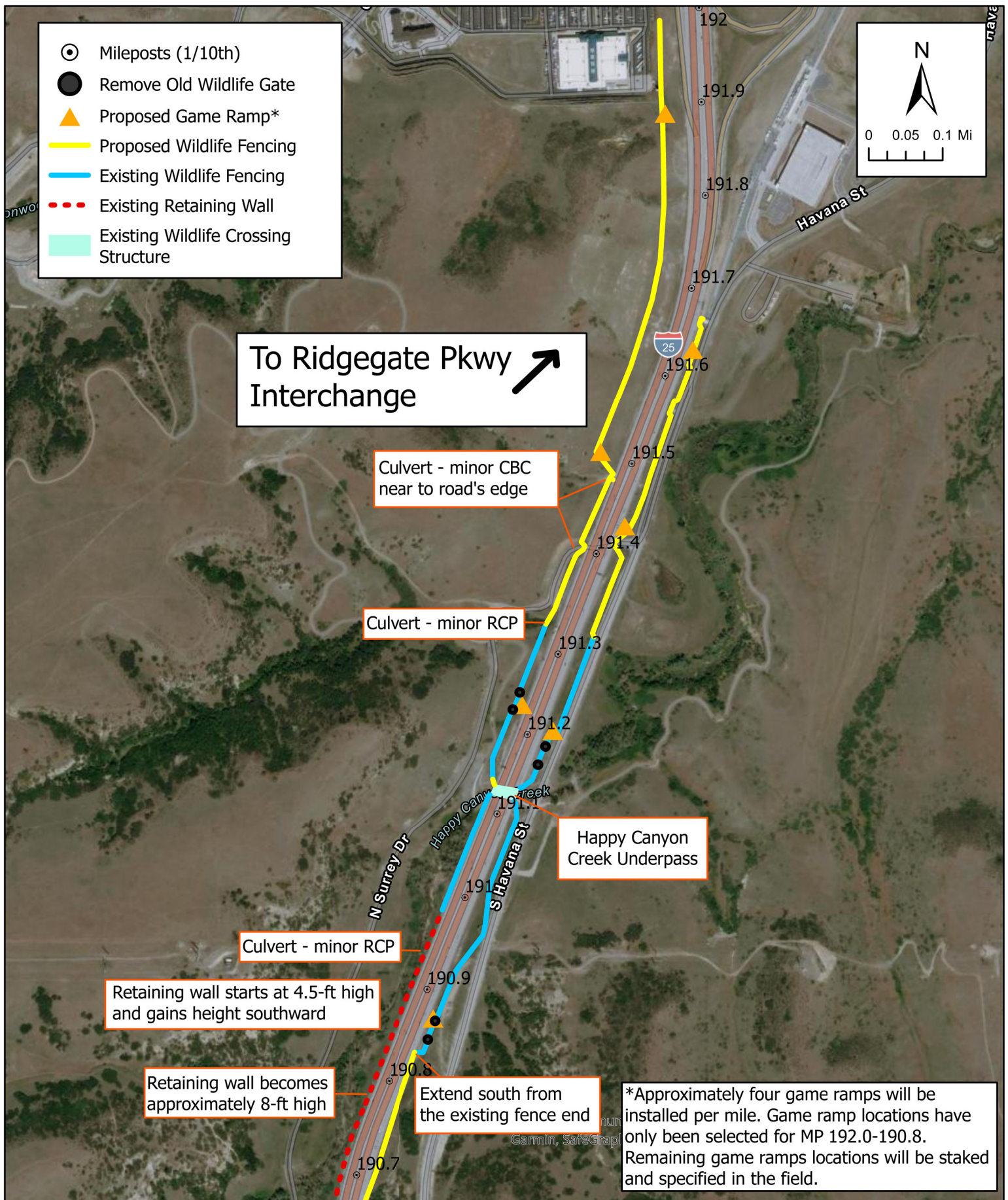
COLORADO
Department of Transportation

Prepared September 1, 2021



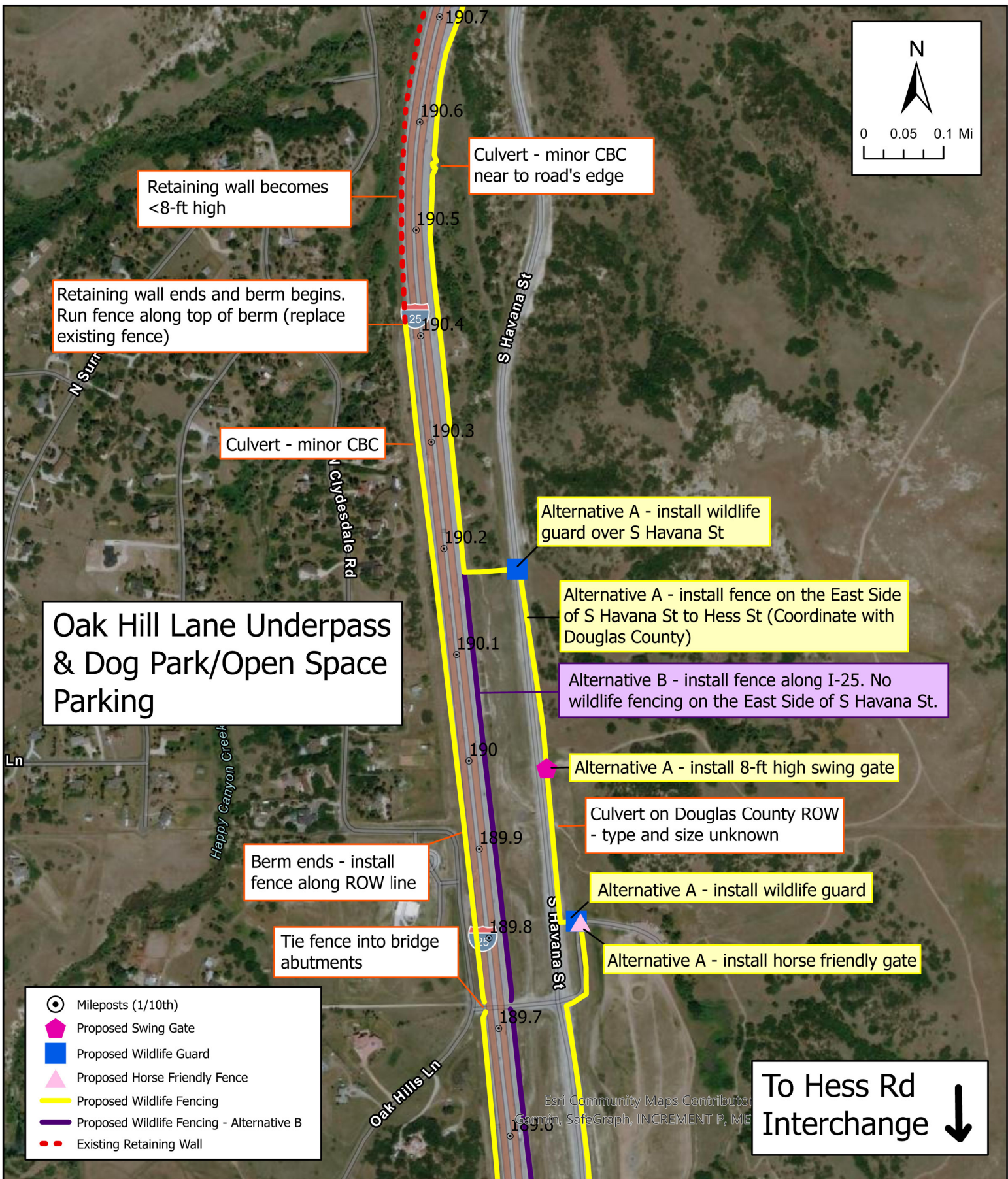
I-25 Happy Canyon Wildlife Improvements
Figure 1. Project Overview

Note: Wildlife fence configuration may be subject to field modifications to aid in efficiency of overall design.



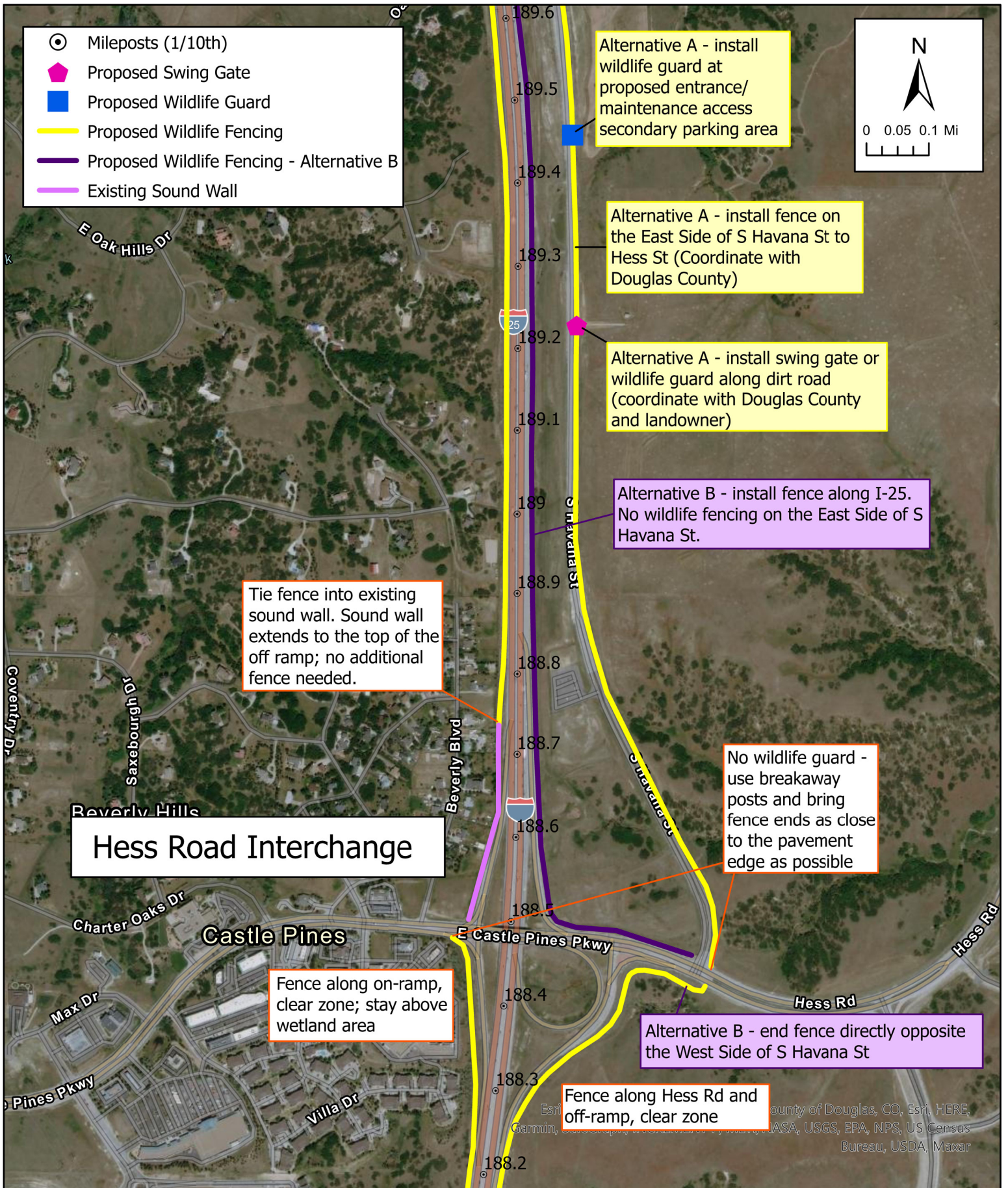
I-25 Happy Canyon Wildlife Improvements
 Figure 2. Milepost 192.0-190.7

Note: Wildlife fence configuration may be subject to field modifications to aid in efficiency of overall design.



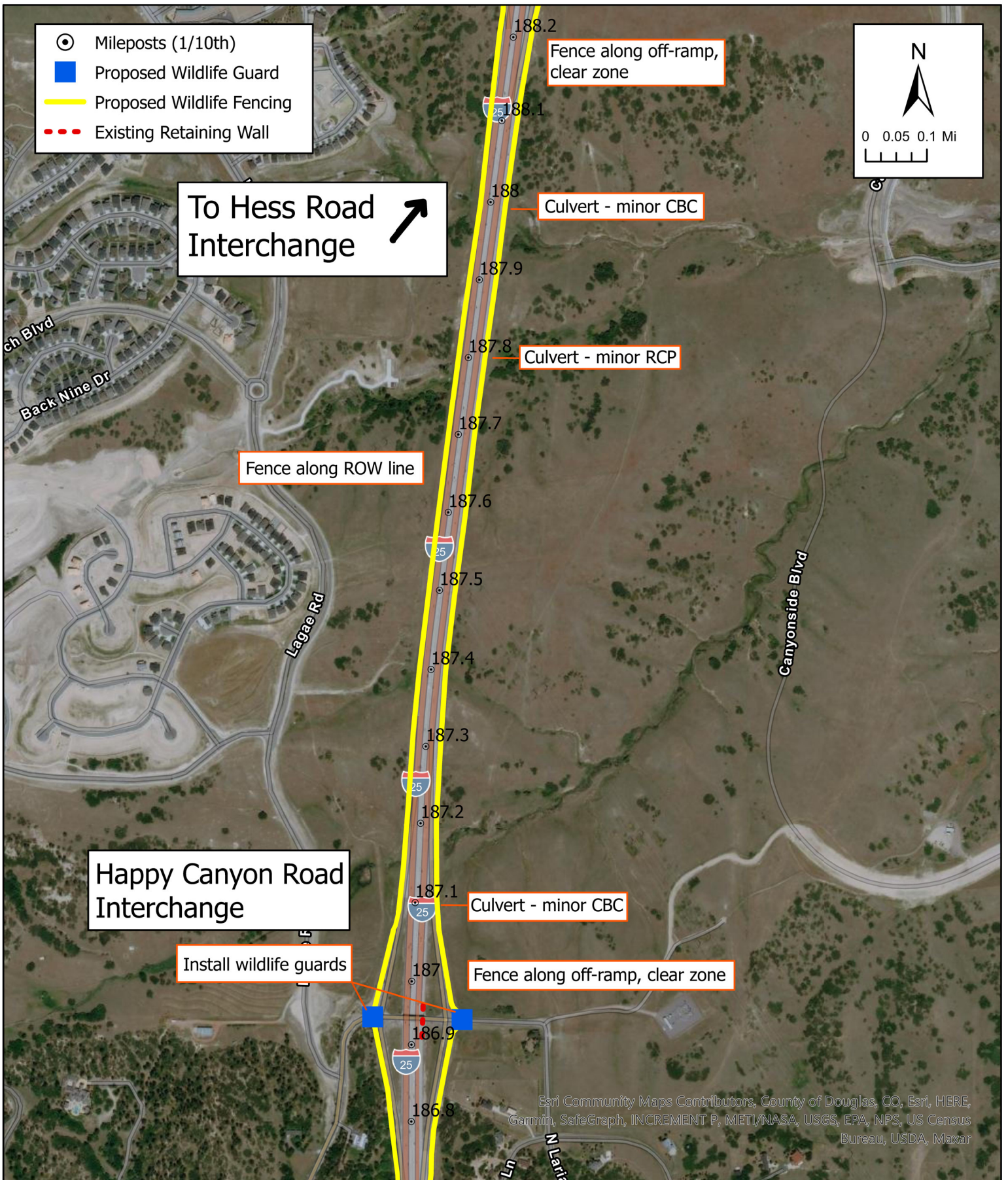
**I-25 Happy Canyon Wildlife Improvements
Figure 3. Milepost 190.7-189.6**

Note: Wildlife fencing configuration may be subject to field modifications to aid in efficiency of overall design.



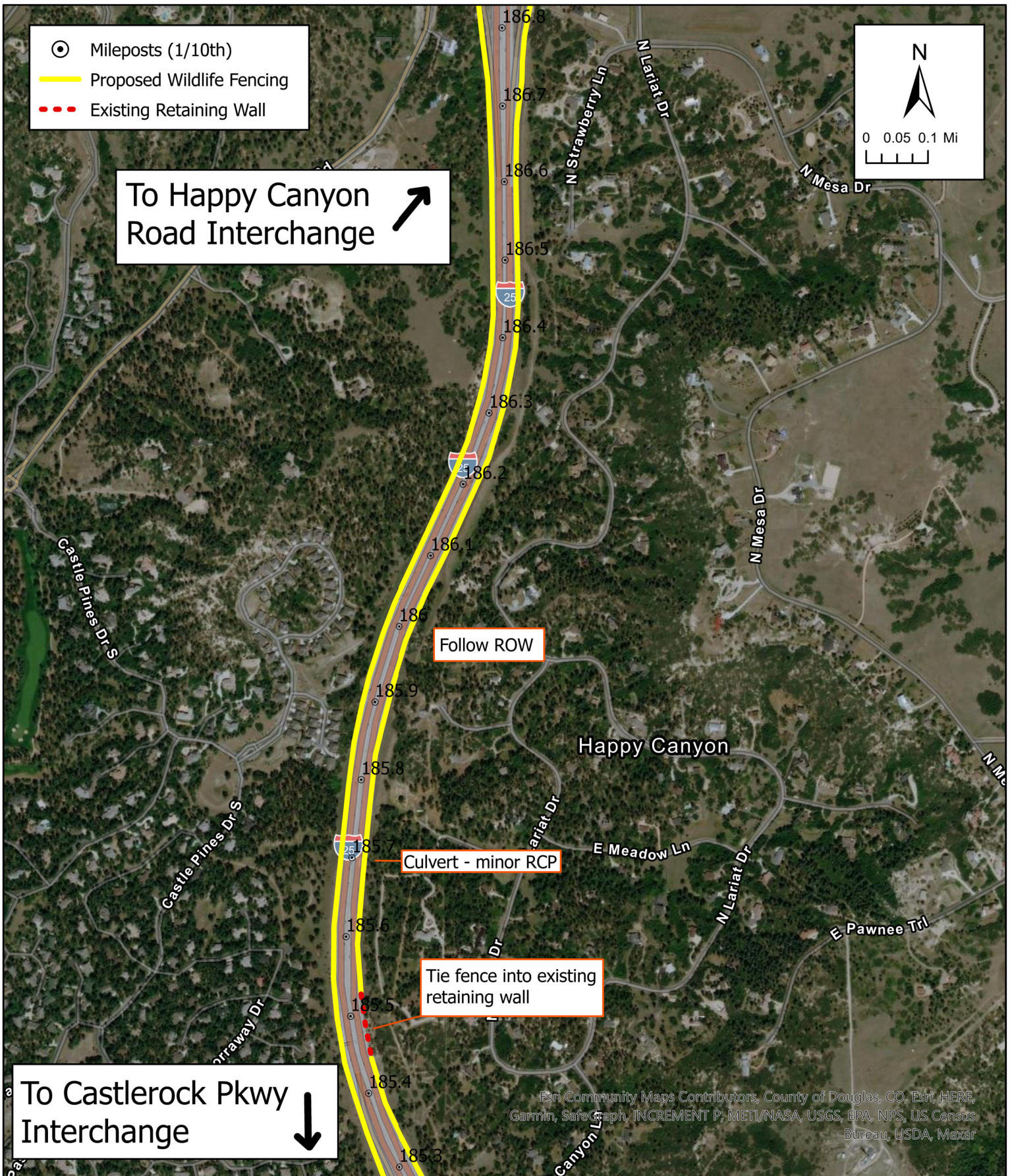
I-25 Happy Canyon Wildlife Improvements
Figure 4. Milepost 189.6-188.2

Note: Wildlife fence configuration may be subject to field modifications to aid in efficiency of overall design.



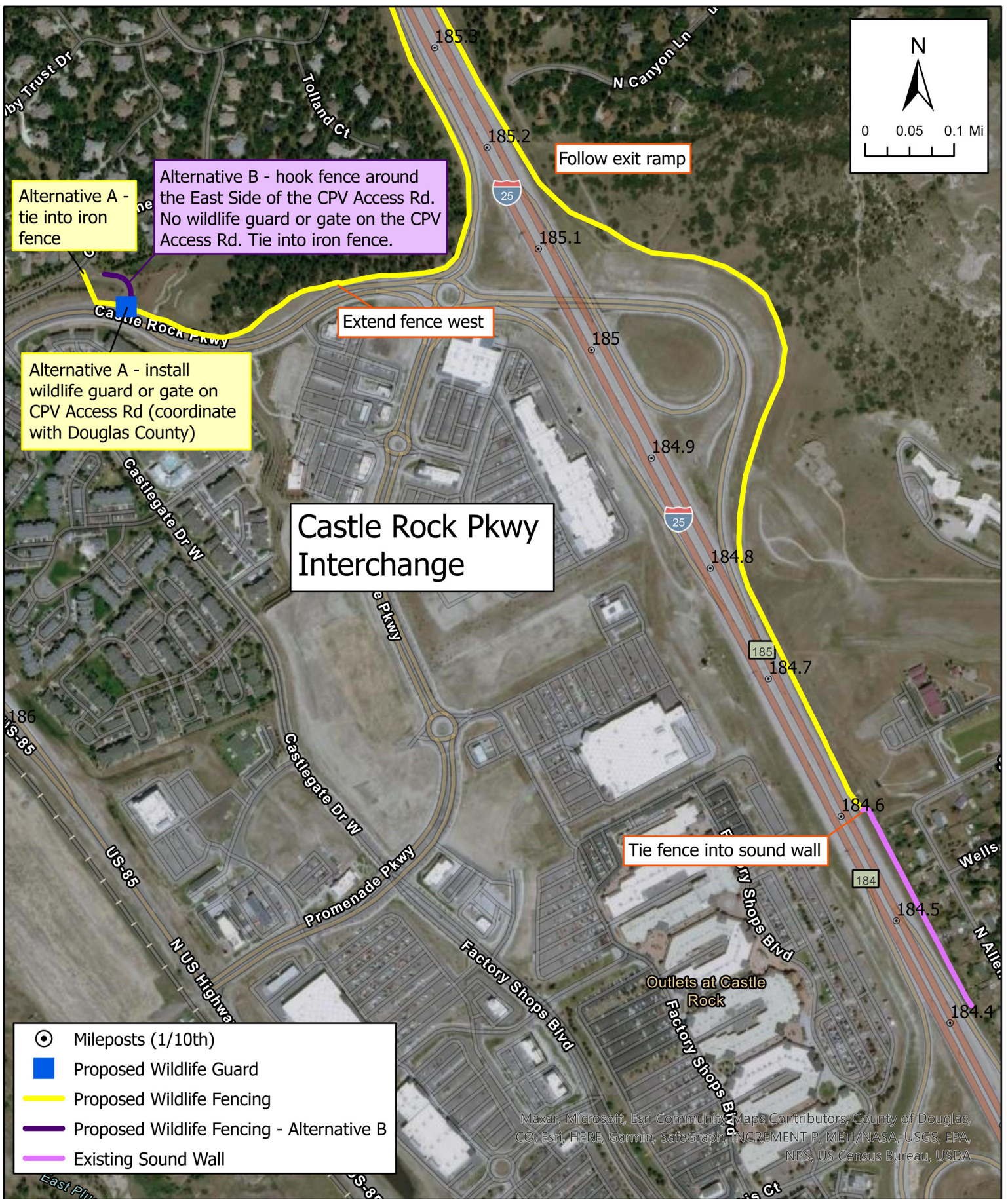
I-25 Happy Canyon Wildlife Improvements
 Figure 5. Milepost 188.2-186.8

Note: Wildlife fence configuration may be subject to field modifications to aid in efficiency of overall design.



I-25 Happy Canyon Wildlife Improvements
 Figure 6. Milepost 186.8-185.3

Note: Wildlife fence configuration may be subject to field modifications to aid in efficiency of overall design.



I-25 Happy Canyon Wildlife Improvements
 Figure 7. Milepost 185.3-184.4

Note: Wildlife fence configuration may be subject to field modifications to aid in efficiency of overall design.