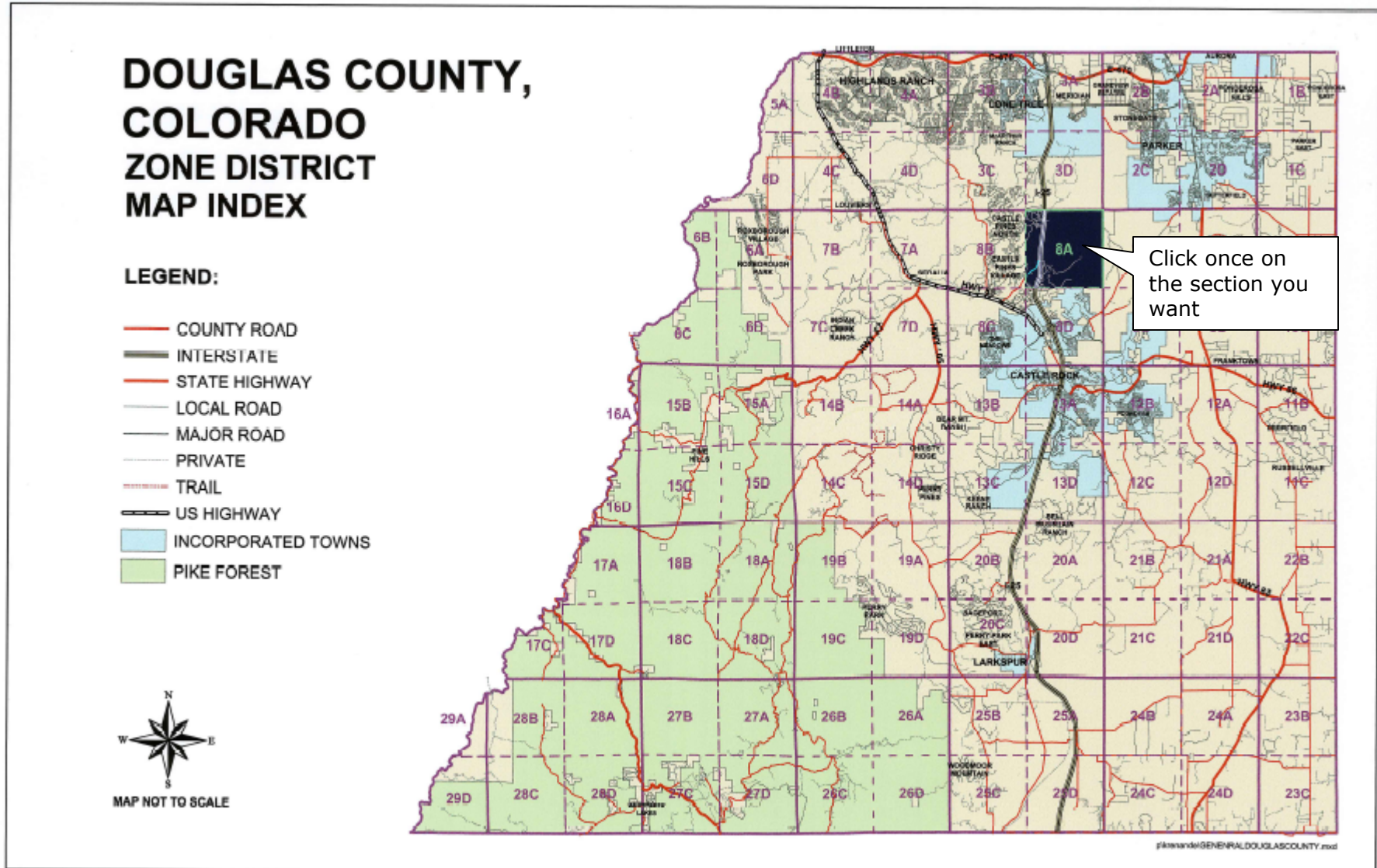
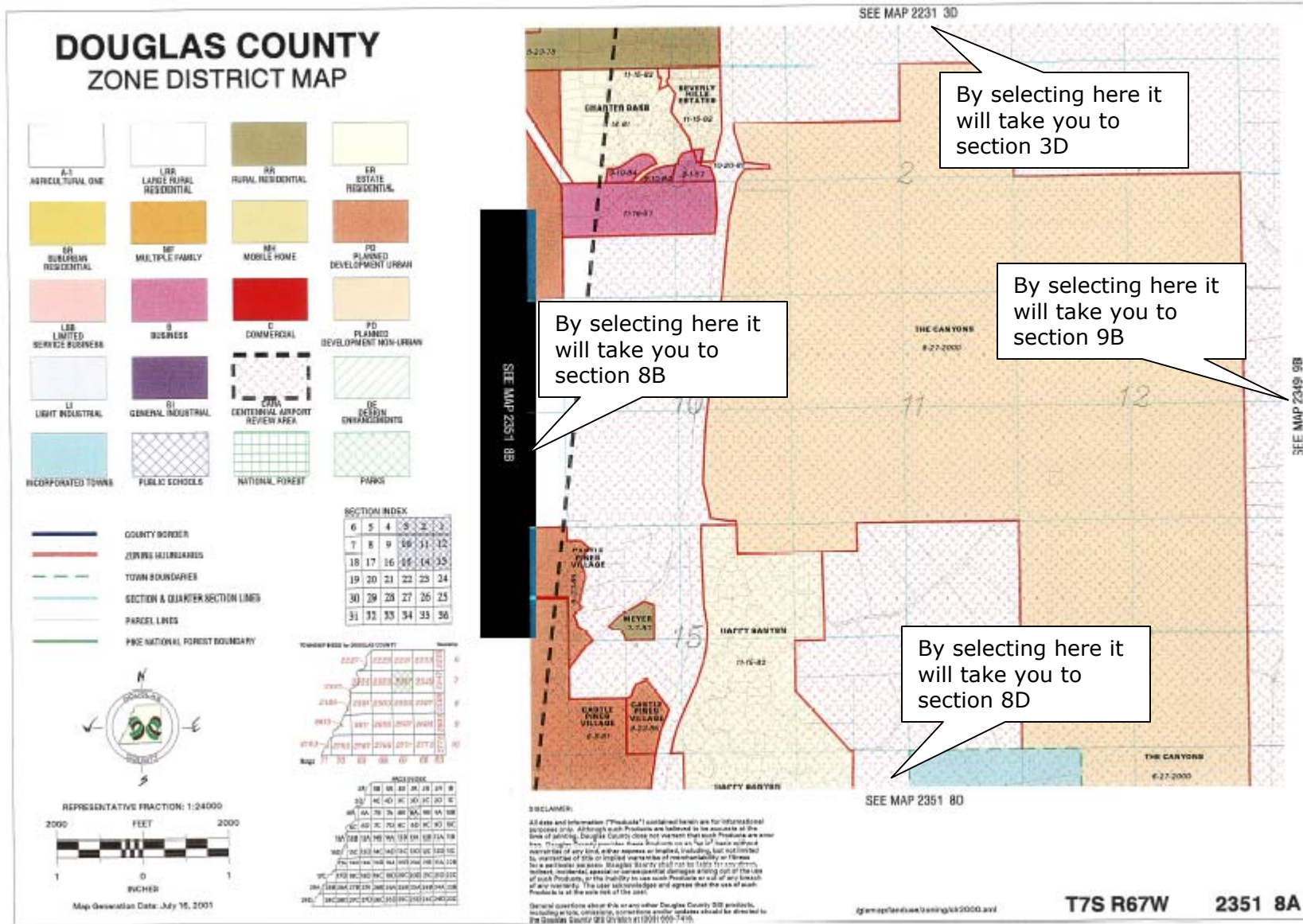


Basic instructions for using the digital Zone District Map

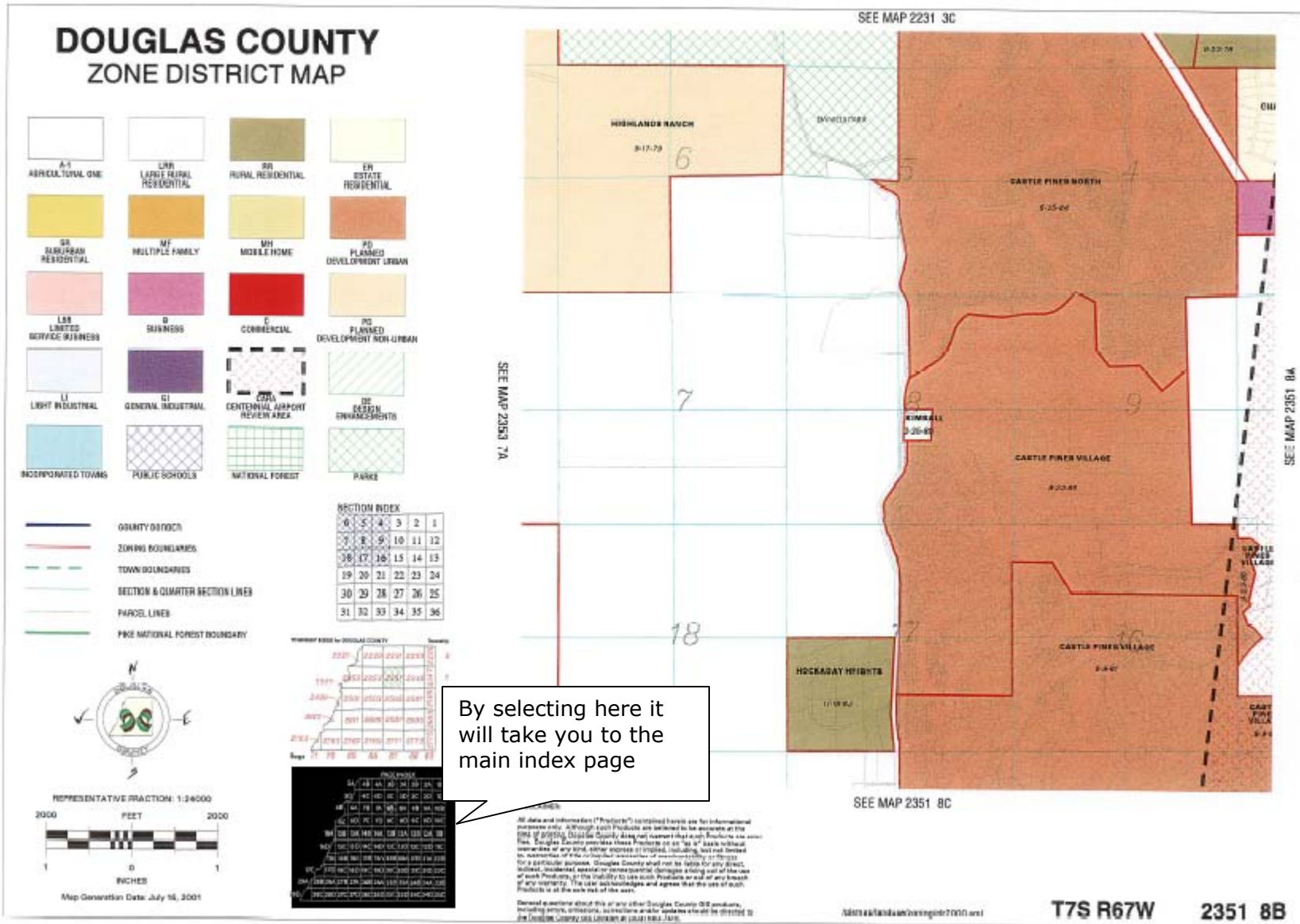
- 1) Select the Zone District Map file.
- 2) Find the area you want and click on that area. Example here is section 8A. You will see the section change colors when selected.



- 3) Next you will notice that section map comes up. From there you can use the legend on the side to find what that area is zoned for.
- 4) If you would like to see the section map next to the one you are on, you can click on the map number and it will take you there. Example here is section 8B. You will see the section change colors when selected.



5) If you want to go back to the main index page just select the map image at the bottom of each map and it will take you back to the home page.


T7S R67W
2351 8B