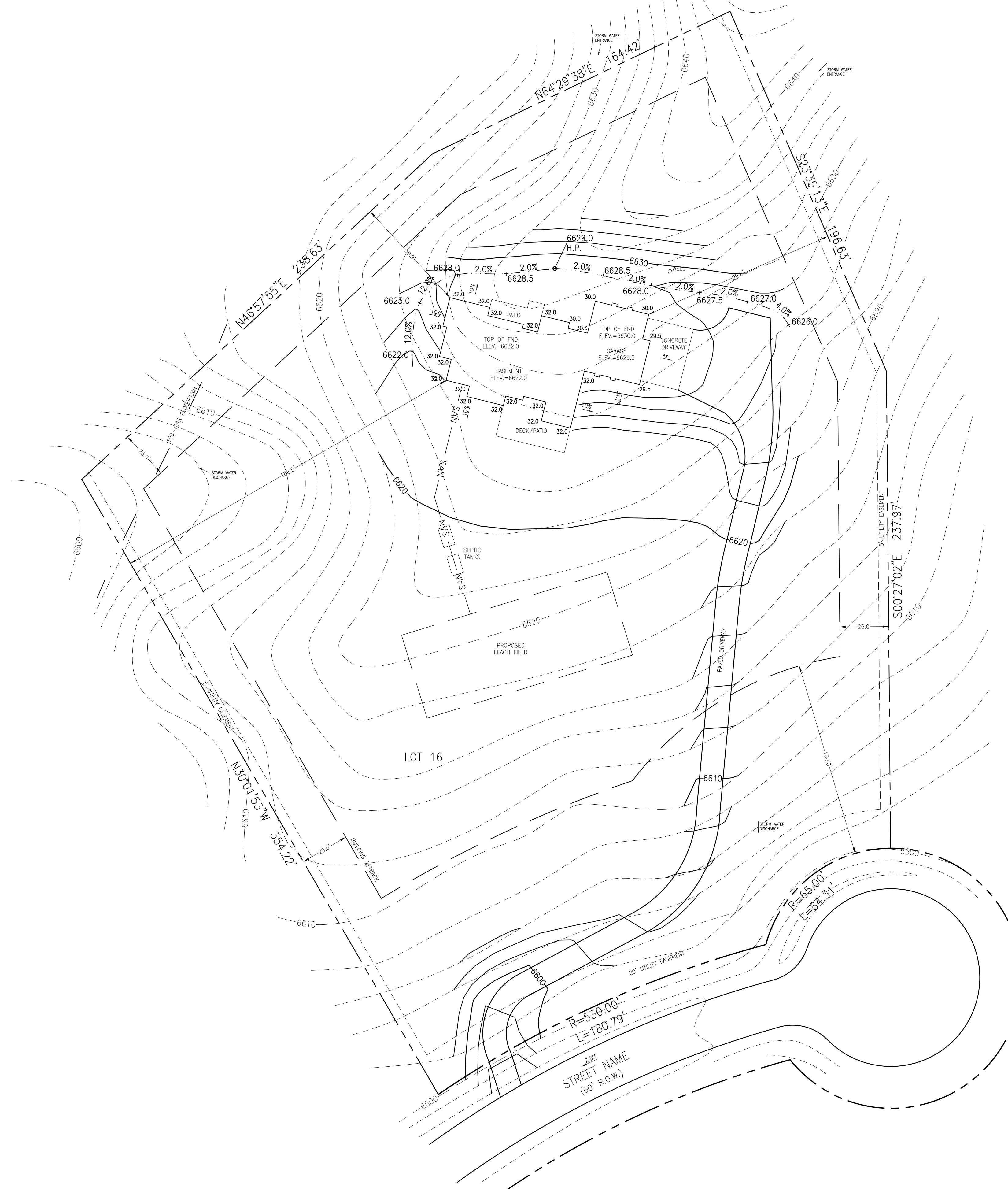
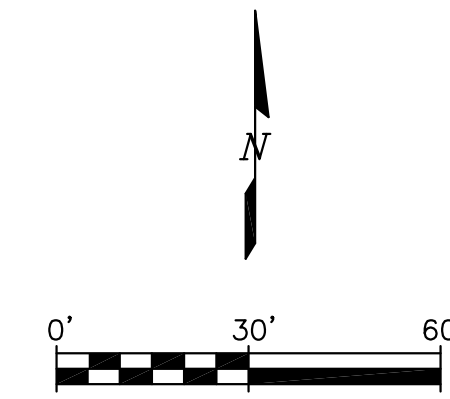


EXAMPLE DRAINAGE PLAN - LARGE LOT



THE DRAINAGE, EROSION AND SEDIMENT CONTROL PLAN INCLUDED HEREIN HAS BEEN PREPARED UNDER MY DIRECT SUPERVISION IN ACCORDANCE WITH THE REQUIREMENTS OF THE GRADING EROSION AND SEDIMENT CONTROL (GESC) MANUAL OF DOUGLAS COUNTY, AS AMENDED.

DESC PLANS PREPARED BY:

AUSTIN ENGINEERING COMPANY INC.

DATE

PROFESSIONAL LICENSE NO.

- NOTE:
1. LOT PERCENT IMPERVIOUS: 7%
(for lots 2.5 acres and larger, provide percent impervious)

DEVELOPMENT REVIEW ENGINEER
DATE
THIS DESC PLAN HAS BEEN REVIEWED BY DOUGLAS COUNTY FOR DRAINAGE, EROSION AND SEDIMENT CONTROL IMPROVEMENTS ONLY.
ENGINEERING DIVISION ACCEPTANCE BLOCK

AUSTIN ENGINEERING CO., INC.
 CONSULTING ENGINEERS
 88 PLAZA DRIVE, SUITE 200
 HIGHLANDS RANCH, COLORADO 80126
 (303) 324-4897
 FAX: (303) 324-4991

SCALE SHOWN IS FOR 24"x36" SHEET.

SUBDIVISION:	
FILING:	
ADDRESS:	COUNTY: DOUGLAS
LOT:	BLOCK:
MODEL OPTIONS:	