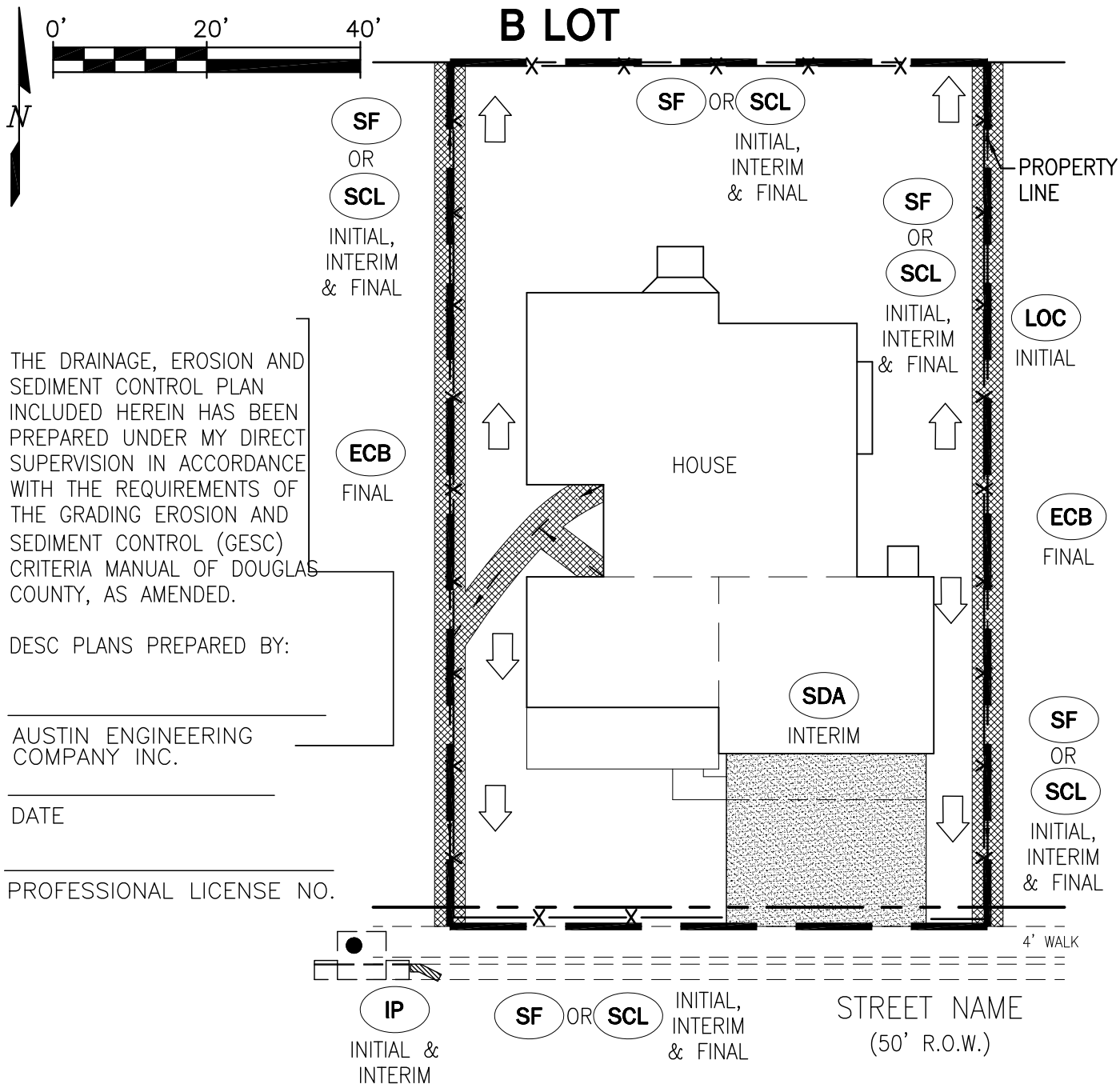


EXAMPLE EROSION AND SEDIMENT CONTROL DRAWING

B LOT



THE DRAINAGE, EROSION AND SEDIMENT CONTROL PLAN INCLUDED HEREIN HAS BEEN PREPARED UNDER MY DIRECT SUPERVISION IN ACCORDANCE WITH THE REQUIREMENTS OF THE GRADING EROSION AND SEDIMENT CONTROL (GESC) CRITERIA MANUAL OF DOUGLAS COUNTY, AS AMENDED.

DESC PLANS PREPARED BY:

AUSTIN ENGINEERING COMPANY INC.

DATE

PROFESSIONAL LICENSE NO.

AUSTIN ENGINEERING CO., INC.

CONSULTING ENGINEERS
 88 PLAZA DRIVE, SUITE 200
 HIGHLANDS RANCH, COLORADO 80126
 (303) 324-4897
 FAX: (303) 324-4991

SUBDIVISION:

FILING:

ADDRESS: COUNTY: DOUGLAS

LOT: BLOCK:

MODEL OPTIONS:

DEVELOPMENT REVIEW ENGINEER

DATE

THIS DESC PLAN HAS BEEN REVIEWED BY DOUGLAS COUNTY FOR DRAINAGE, EROSION AND SEDIMENT CONTROL IMPROVEMENTS ONLY.

ENGINEERING DIVISION ACCEPTANCE BLOCK