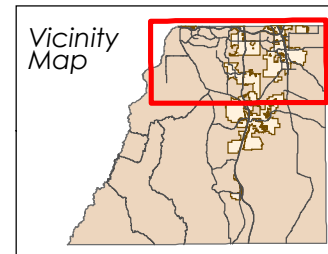


Parks And Trails Plan Map- Northern Tier - B.2

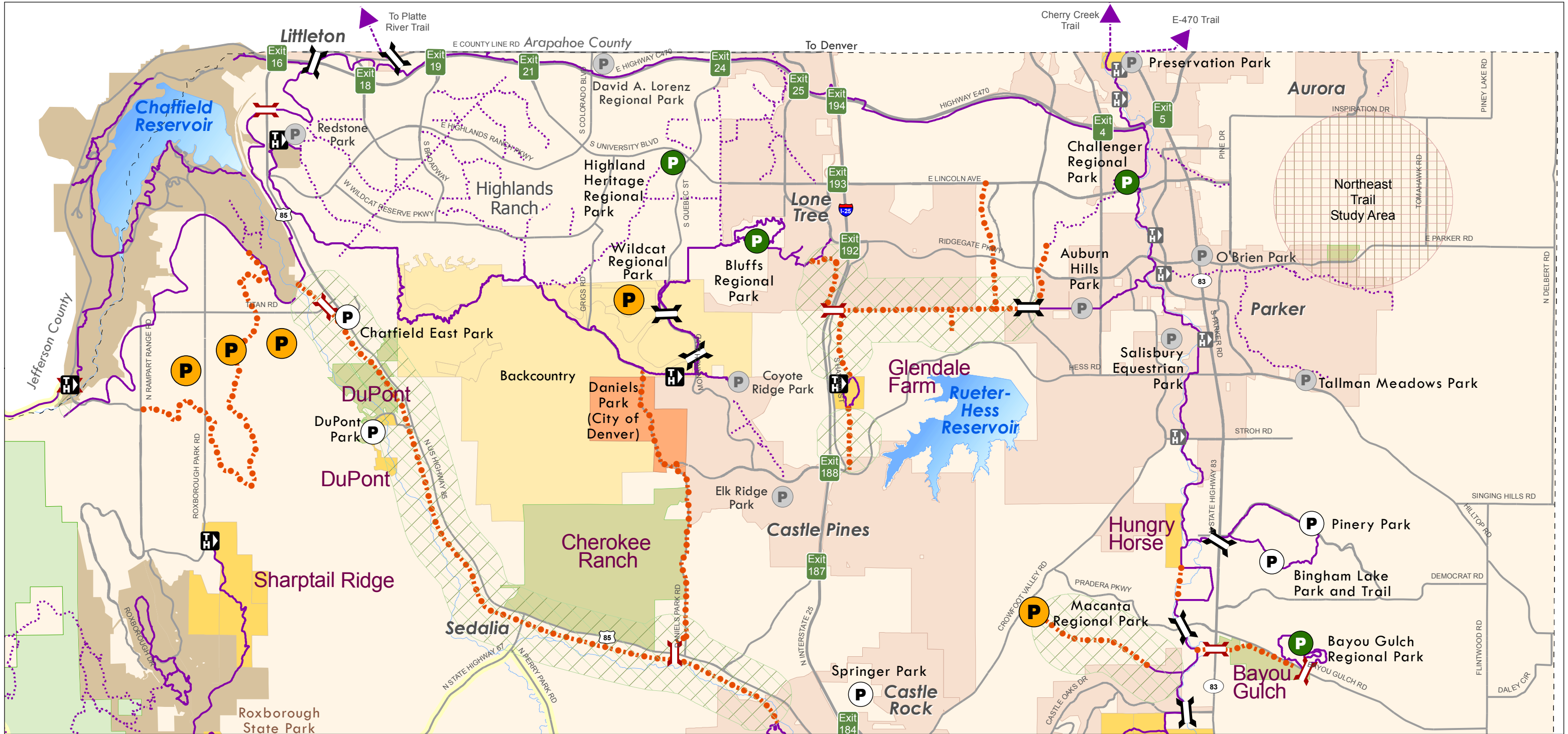
2030 Parks, Trails and Open Space Master Plan

November 5, 2012



DISCLAIMER:
All data and information ("Products") contained herein are for informational purposes only. Although such Products are believed to be accurate at the time of printing, Douglas County does not warrant that such Products are error free. Douglas County provides these Products on an "as is" basis without warranties of any kind, either express or implied, including, but not limited to, warranties of title or implied warranties of merchantability or fitness for a particular purpose. Douglas County shall not be liable for any direct, indirect, incidental, special or consequential damages arising out of the use of such Products, or the inability to use such Products or out of any breach of any warranty. The user acknowledges and agrees that the use of such Products is at the sole risk of the user.

General questions about this or any other Douglas County GIS products, including errors, omissions, corrections and/or updates should be directed to the Douglas County GIS Division at (303) 660-7416.



- | | | | | |
|---|--|-------------------------------|----------------------------|--|
| Trailhead Along Major Trail And Within Municipality | Future Douglas County Regional Park | Proposed Regional Trail | Stream | Protected Land with Public Trails |
| Douglas County Trailhead | Douglas County Regional Park | Existing Major Trail | Trail Alignment Study Area | Protected Land with Access by Special Arrangement |
| Proposed Trail Underpass | Douglas County Local Park | Existing Other Trail | Northeast Trail Study Area | Backcountry Area Highlands Ranch Limited Public Access |
| Trail Underpass | Other Regional or Local Park (City, Town, Metropolitan District) | Motorized Vehicle Trail (OHV) | Denver Mountain Park | Municipality |
| | | American Discovery Trail | Colorado State Park | Douglas County |
| | | Major Road | Pike National Forest | |

1:95,040
1 inch equals 1.5 miles
0 1.5 Miles

2030 PARKS, TRAILS, AND OPEN SPACE MASTER PLAN

A SUB-ELEMENT OF THE COMPREHENSIVE MASTER PLAN