

INVESTMENT & PUBLIC ENGAGEMENT STRATEGY *for*



**PARKS
TRAILS
HISTORIC RESOURCES &
OPEN SPACE
FUND**



HISTORY OF PARKS, TRAILS, HISTORIC RESOURCES & OPEN SPACE SALES AND USE TAX



VOTER APPROVAL:

➤	1994	58%
➤	1998	53.5%
➤	2022	87.6%

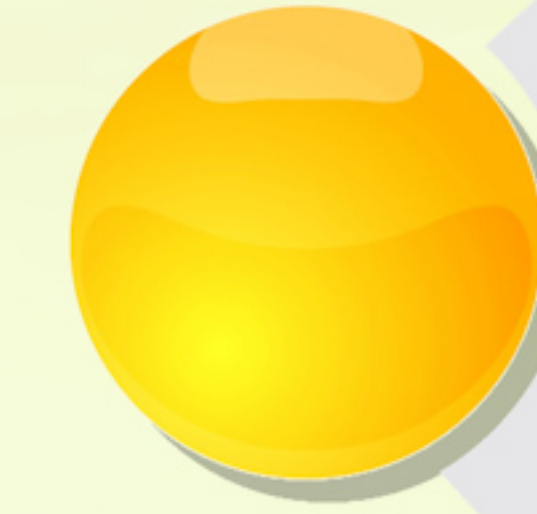


PARKS AND TRAILS

ACCOMPLISHMENTS



Six new fields



Three conversions from bluegrass
to synthetic fields



Reuter Hess Reservoir
•\$1,750,000 contributed



Bayou Gulch Regional Park
•4.68 miles of trails



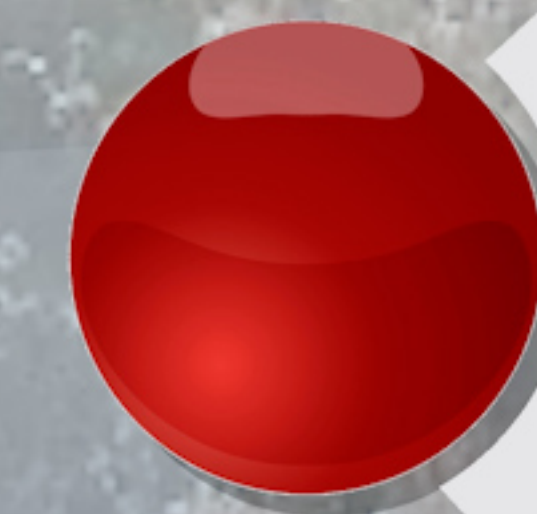
Cherry Creek Regional Trail
•3 miles added for 11.3 miles total



East/West Regional Trail
•27 miles



Pinery Loop Trail
•4 miles



Bayou Gulch
•Bike Skills Park Trail-7 miles



HISTORIC RESOURCES

ACCOMPLISHMENTS



Initial Tax Funding

- Purchase of Spring Valley School site and other historic resources located on Open Space properties




Leveraged approximately \$1.1 Million in State Historical Fund grants since 2019



Funding to support iconic County historic properties such as Schweiger Ranch and statewide public events such as International Archaeology Day



Management of 18 county-owned historic and cultural resource sites



2024 investments include restoration work on Miksch-Helmer Cabin, Evans Homestead, and Columbine Barn, properties that will allow for public access and education



ACCOMPLISHMENTS

Open Space Acquisitions include:

- Greenland Ranch, Sandstone Ranch, Lost Canyon Ranch, and most of the scenic view sheds along I-25

Protected 66,000 acres of wildlife habitat/movement corridors, agriculture watershed quality, scenic viewsheds, and community buffers

Manage and maintain 110 miles of multiple use, non-motorized trails, accessible from 11 unique trailheads on 17,000 acres

Significant forest management, accessibility, noxious weed control projects

Attracting 650,000 visitors annually and 460 active community volunteers

The PARKS, TRAILS, HISTORIC RESOURCES & OPEN SPACE FUND **consistent with ballot measure 1A, must:**

- ➔ **Protect, maintain, and add parks, trails historic resources and open spaces, wildlife habitats**
- ➔ **Buffers between communities**
- ➔ **Conserve lands along streams and lakes that also protect water quality**
- ➔ **Conserve working farms and ranches**
- ➔ **Preserve scenic views and landmarks**
- ➔ **Create and maintain recreational amenities**
- ➔ **Maintain and conserve historic preservation sites**

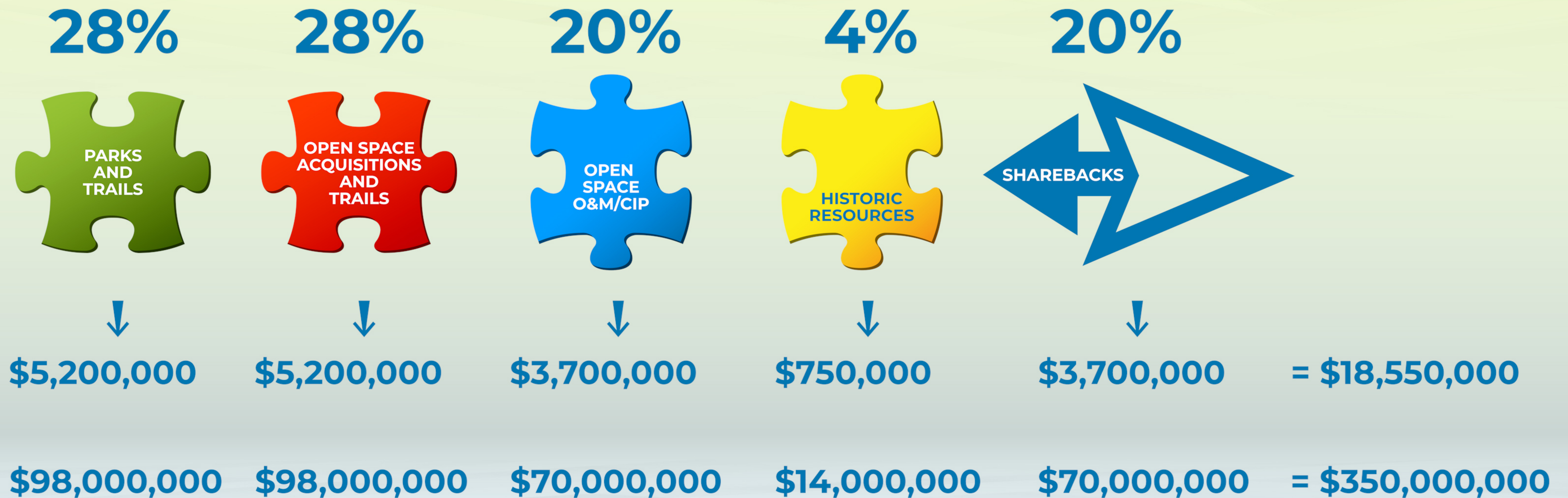
The Board of County Commissioners has Fund distribution authority, as defined in the Resolution



- ➔ Up to 28% Parks and Trails
- ➔ Up to 4% Historic Resources
- ➔ 28% Open Space Acquisitions and Trails

- ➔ Up to 20% Open Space Operations and Maintenance/CIP
- ➔ 20% Municipal Shareback

Annual and Aggregate Sales Tax Collection



Annual Collection ➔

Collected over 15 Years ➔

20%

is set aside for
Sharebacks
given to eligible municipalities
in Douglas County.

Sharebacks
are available upon request,
after review by advisory boards &
the Board of County Commissioners.



CITY OF
LONE TREE



BOARD SHARED PRIORITIES

1. Zebulon, a mega-sports event complex


2. High Note Regional Park

3. Wildcat Regional Park

4. 65% to major regional projects and 35% to local projects

BOARD OF COUNTY COMMISSIONERS STRATEGIC PRIORITIES





**CITIZEN ENGAGEMENT IS THE
HEARTBEAT OF EFFECTIVE
LOCAL GOVERNMENT**

PUBLIC ENGAGEMENT OPPORTUNITIES INCLUDE:



Live Town Halls

1

2

Board of County
Commissioners
Work Sessions



3



Advisory Board
Meetings and
Recommendations

4

Social Media



5



Community
Survey

6

Affinity or
Subscription
Groups



7



Citizen
Comments



01



**BOCC Input &
Public Input**

02

Parks Advisory Board (PAB)

PURPOSE:

- ➔ Make recommendations to the BOCC regarding disbursement of funds from the Open Space Land, Trails and Sales Tax Fund
- ➔ Review and recommend projects including all forms of recreation from the BCC and potential external partners based on BOCC priorities
- ➔ Members are appointed by the Board of County Commissioners by District

03



Vision

- ➔ More Parks and Trails to meet expanding demands & population
- ➔ Regional Parks and Trails to serve the whole county
- ➔ Parks and Trails for all
- ➔ Parks and Trails that do most good for the most amount of people
- ➔ Parks or Trail amenity within a 10-minute drive from every county resident
- ➔ Promote partnerships and expand funding resources



04

Strategy



IMPROVE AND MAINTAIN
SAFE AND CLEAN
PARKS AND TRAILS
(PROTECT THE INVESTMENT)

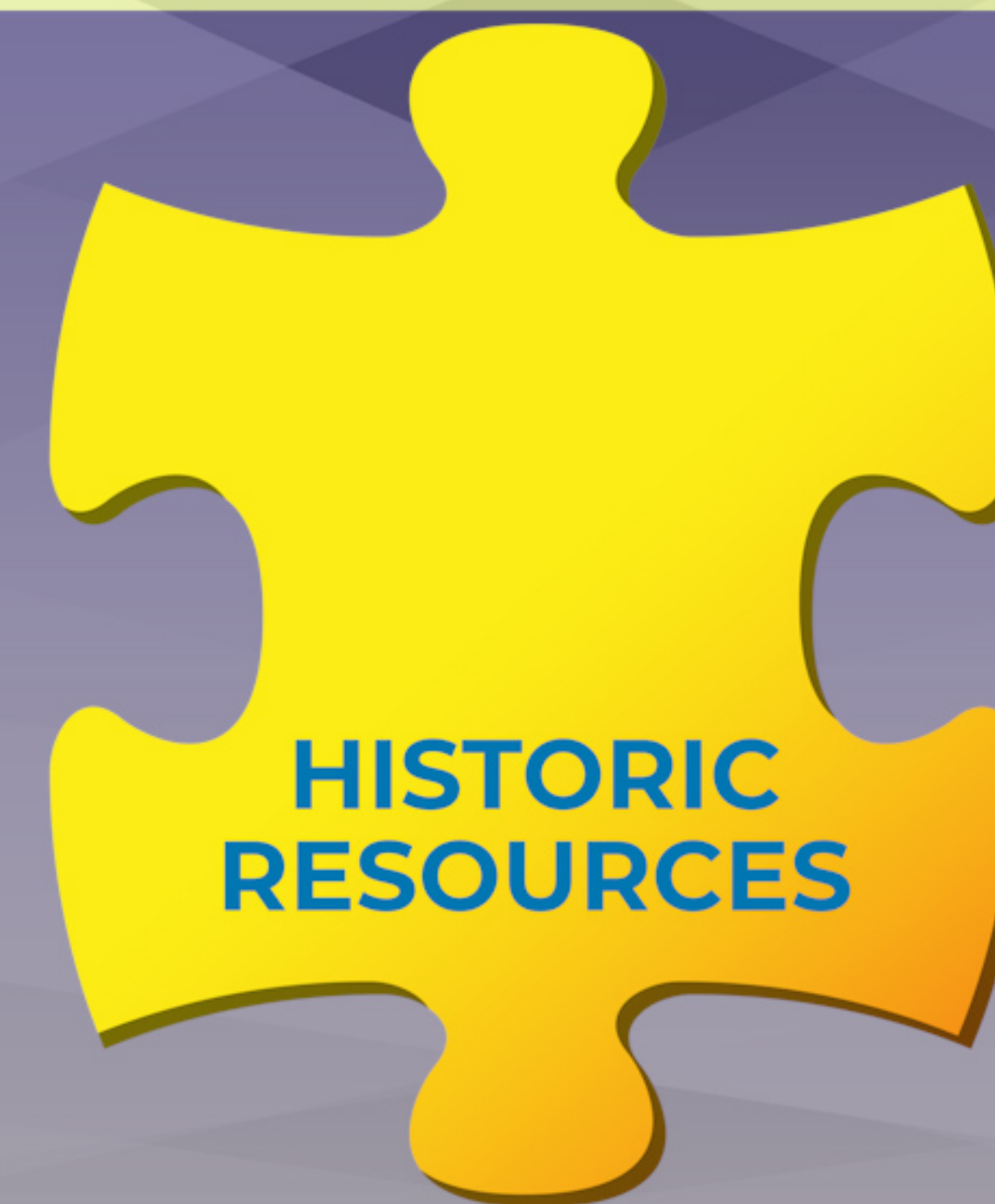
PARTNERSHIPS

INNOVATION

EXPAND PARK AND TRAIL
OPPORTUNITIES WHILE
LOWERING MAINTENANCE
COSTS

PARK AND TRAIL INPUT





01



**BOCC Input &
Public Input**

02

**Historic Preservation Board
(HPB)**

PURPOSE:

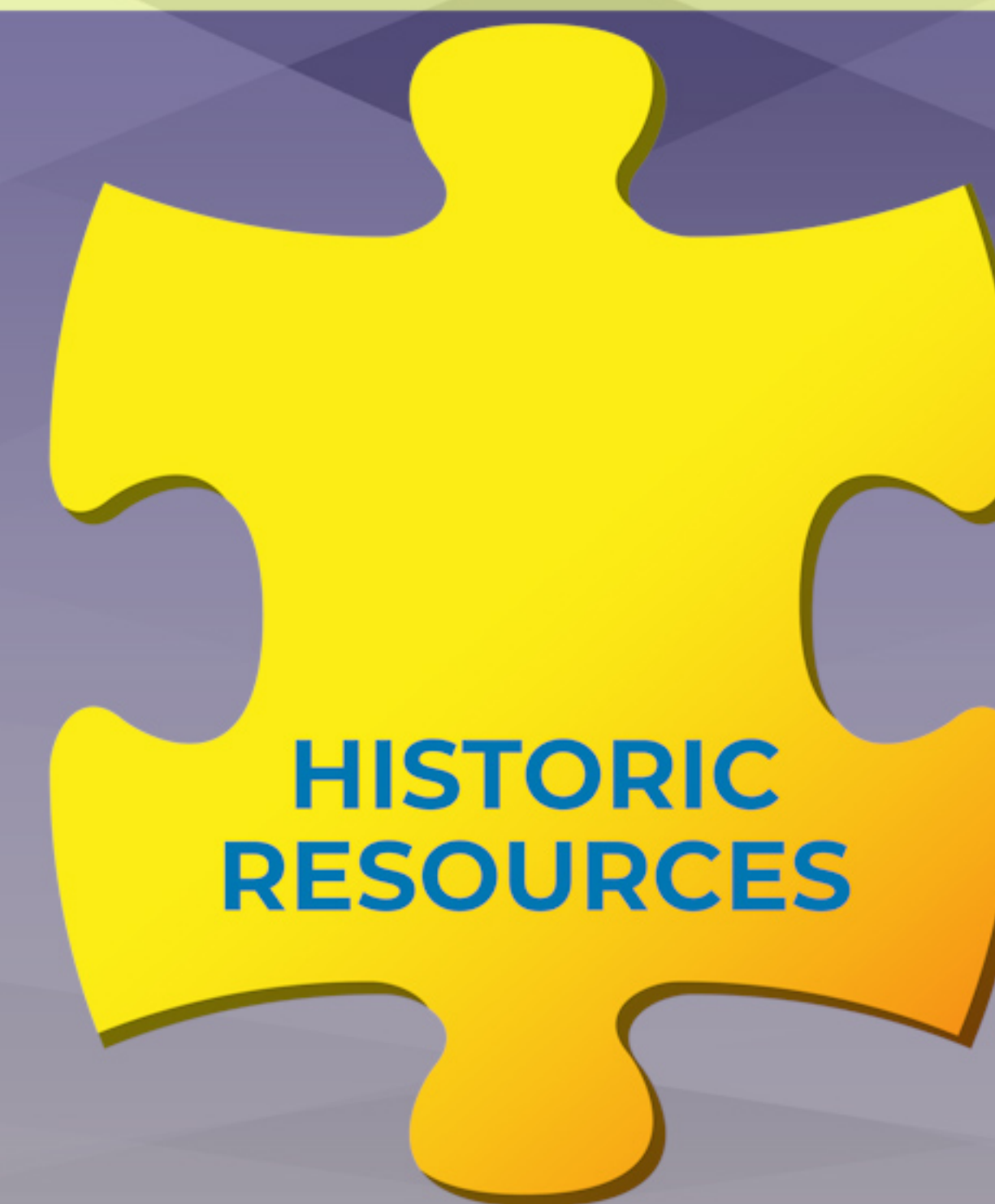
- ➔ Make recommendations to the BOCC regarding designation of historic landmarks or historic districts in unincorporated Douglas County
- ➔ Assist in oversight of historic resource allocations from the Parks, Trails, Historic Resources and Open Space (PTHROS) Sales and Use Tax fund
- ➔ Members are appointed by the Board of County Commissioners

03



Vision

- ➔ **Preserve cultural resources**
- ➔ **Increase public access to cultural resources**



04

Strategy



ACQUIRE SIGNIFICANT
CULTURAL RESOURCES

IDENTIFY AND ASSESS
THE VIABILITY OF
CULTURAL RESOURCES

INTEGRATE CULTURAL
RESOURCES INTO NEW
DEVELOPMENT
PROJECTS

CURATE CULTURAL
RESOURCES IN
DOUGLAS COUNTY
REPOSITORY

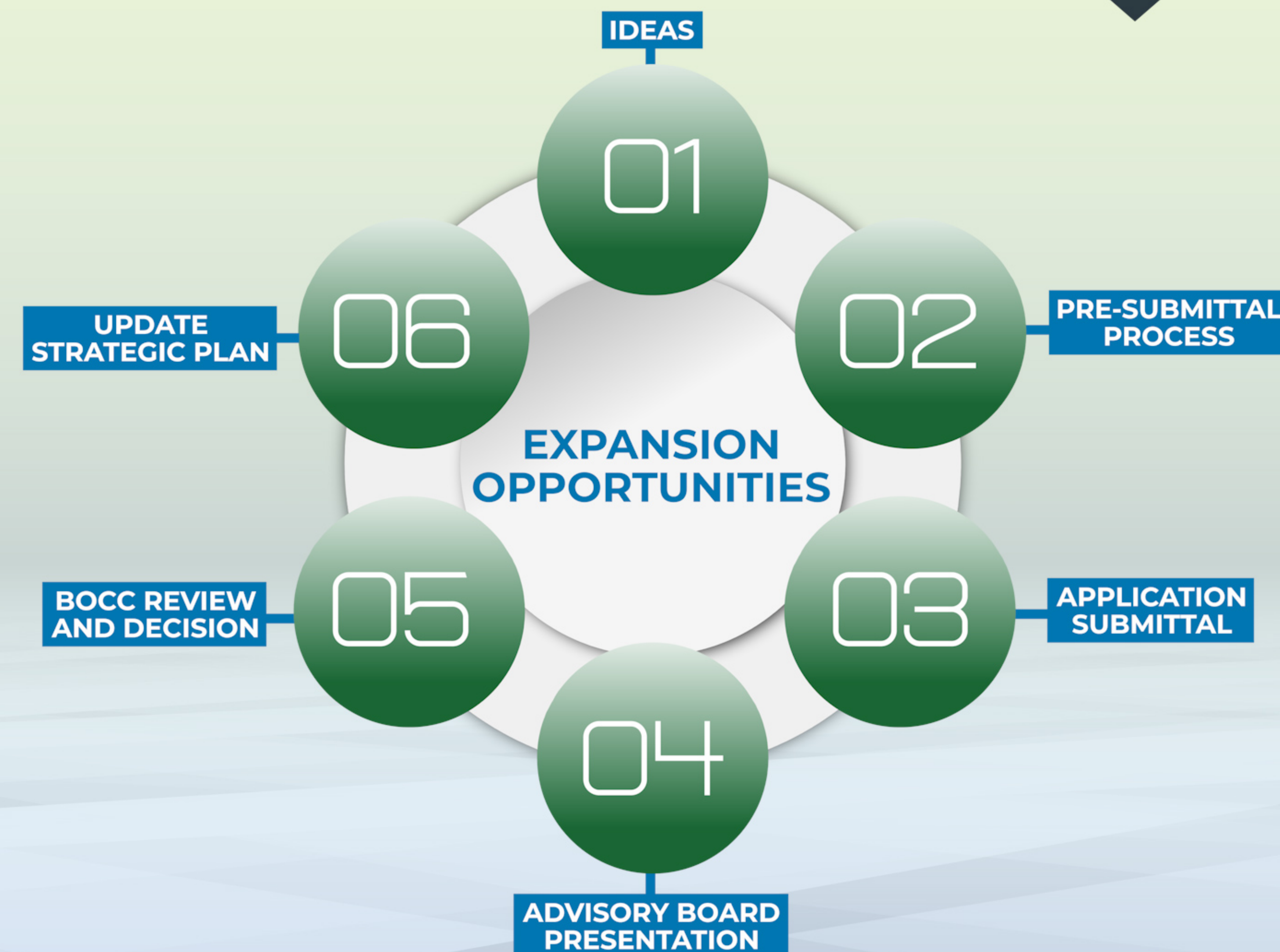
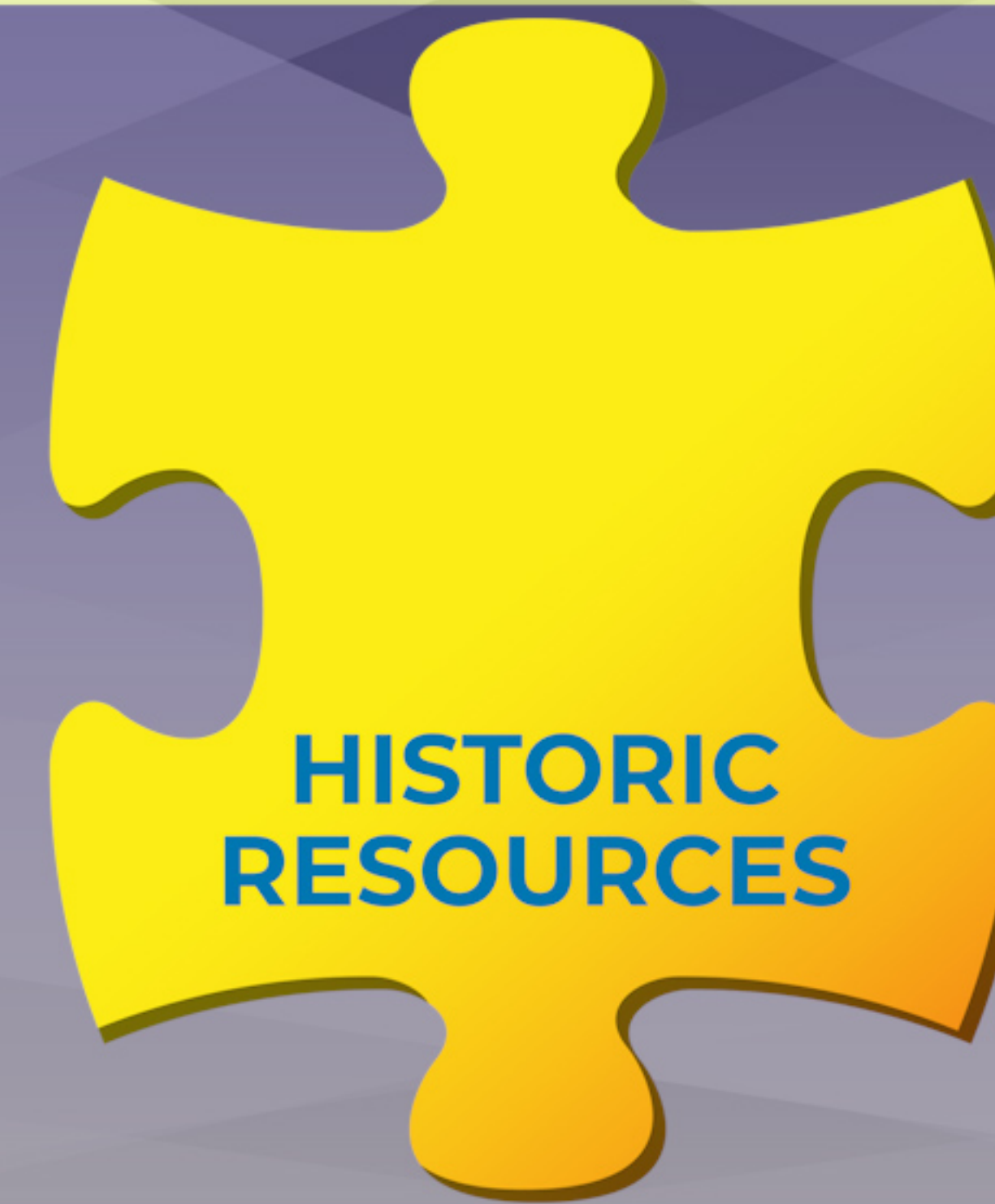
PROTECT SIGNIFICANT
CULTURAL RESOURCES

INTEGRATE CULTURAL
RESOURCES INTO PARKS,
TRAILS, AND OPEN SPACE
PROJECT WHENEVER
FEASIBLE

PROVIDE RESOURCES FOR
EMERGENCY MAINTENANCE
OF THREATENED
CULTURAL RESOURCES

USE GRANTS TO
STRETCH TAX
REVENUES

PARTNERSHIPS WITH
HISTORIC SOCIETIES,
UNIVERSITIES,
VOLUNTEERS



OPEN SPACE ACQUISITIONS AND TRAILS

01



**BOCC Input &
Public Input**

02

**County Open Space
Advisory Committee
(COSAC)**

PURPOSE:

- ➔ Make recommendations to the BOCC and municipal officials regarding disbursement of funds
- ➔ Select open space land to be proposed for acquisition, maintenance, or preservation
- ➔ Establish priorities
- ➔ Recommendations to BOCC on lands involving conservation easements acquired with such funds

03



**Acquisition
Vision**

- ➔ Partner to provide opportunities to maximize spending power
- ➔ Provide public access for all on public lands where appropriate
- ➔ Open spaces to serve the whole county and provide a regional and statewide draw
- ➔ Purchase land that provides opportunities to protect natural and cultural resources
- ➔ Open space amenities within every commissioner district



04

Acquisition Strategy



PURCHASE LANDS TO MEET THE COMMUNITY'S NEEDS AND DESIRES

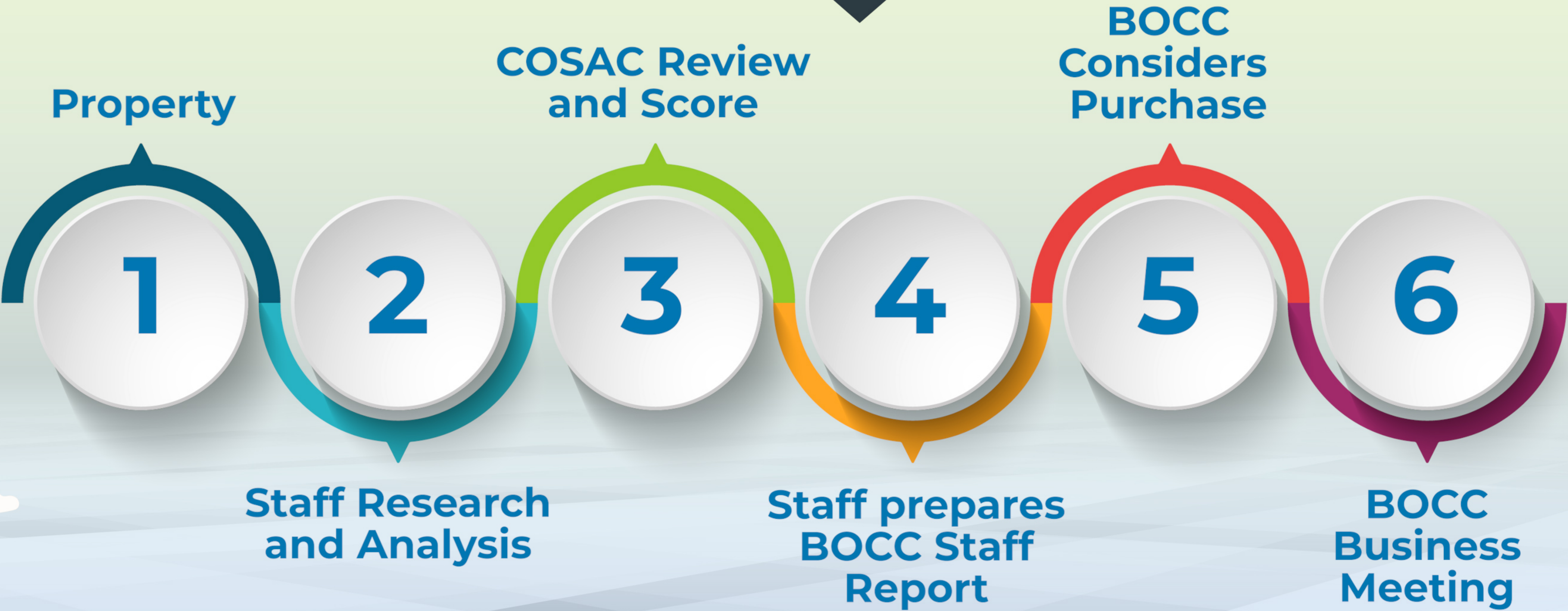
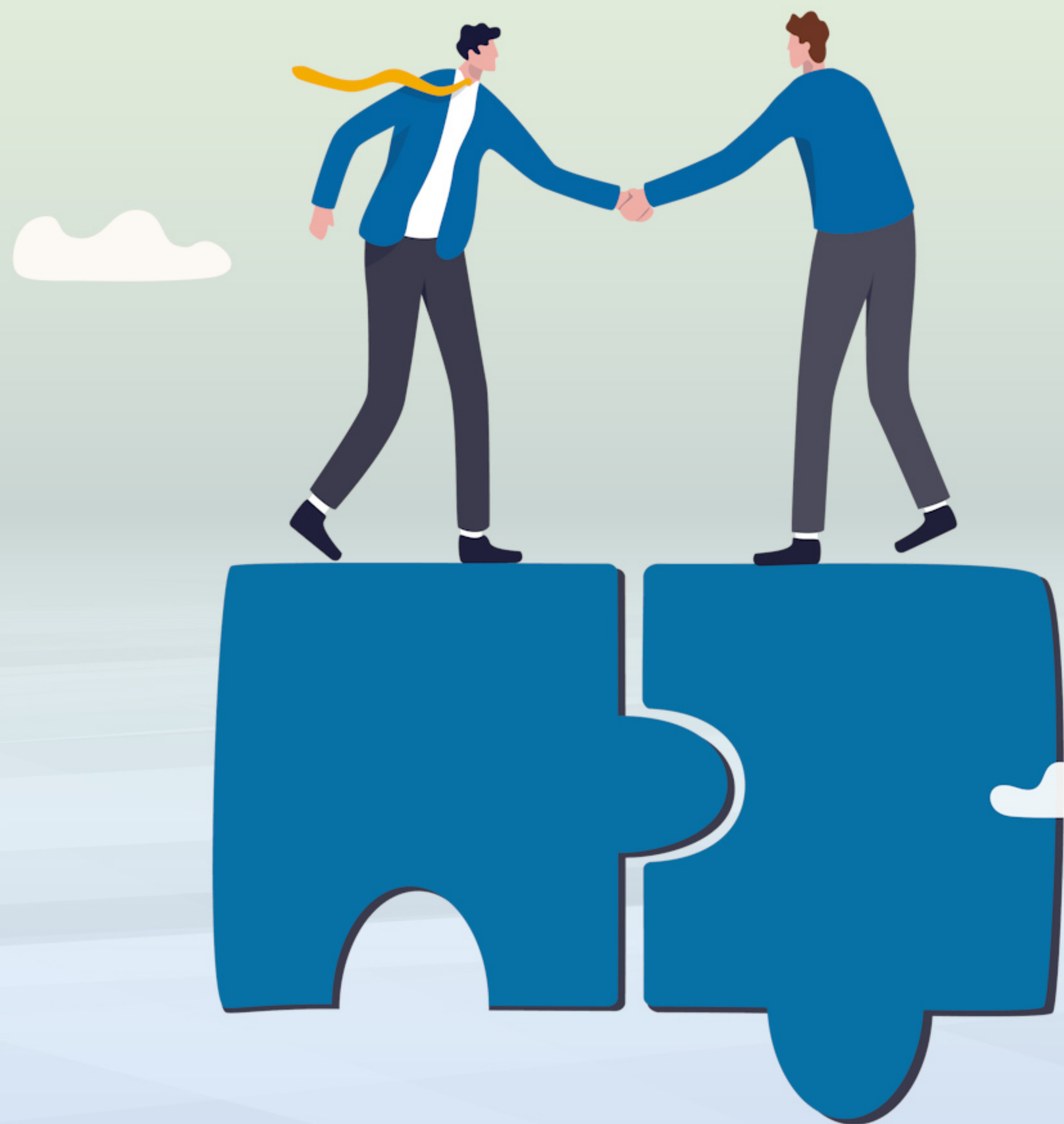
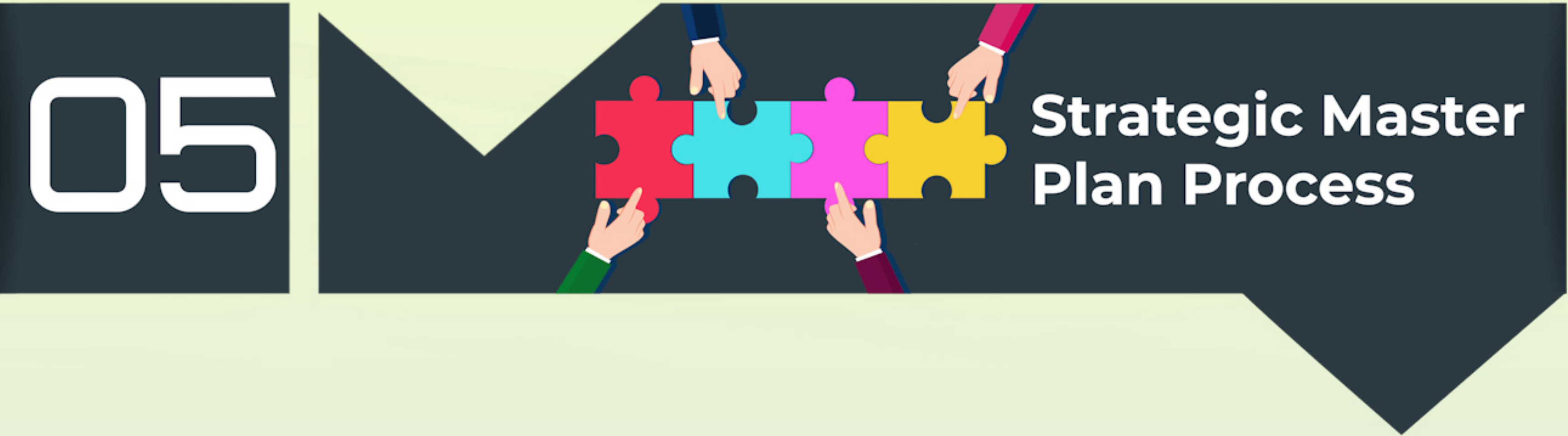
USE CRITERIA TO GUIDE INFORMED DECISIONS

MAXIMIZE INVESTMENTS THROUGH PARTNERSHIPS

RESERVE \$10 MILLION TO BE USED FOR POTENTIAL LEGACY ACQUISITION

CONNECT REGIONAL AND STATEWIDE TRAILS

CONNECT LAND AND TRAILS





01



**BOCC Input &
Public Input**

02

**County Open Space
Advisory Committee
(COSAC)**

PURPOSE:

- ➔ Make recommendations to the BOCC and municipal officials regarding disbursement of funds
- ➔ Select open space land to be proposed for acquisition, maintenance, or preservation
- ➔ Establish priorities
- ➔ Recommendations to BOCC on lands involving conservation easements acquired with such funds

03



Vision

- ➔ Maximize the use of funds
- ➔ Balance maintenance and improvements to protect natural and cultural resources
- ➔ Develop open space properties for all
- ➔ Expand recreational and educational opportunities and wildlife corridors
- ➔ Preserve the cultural history on Open Space lands
- ➔ Complete Douglas County's portion of the Colorado Front Range Trail



04 Strategy

A teal banner with the number "04" in a purple box and the word "Strategy" in white. To the right of the text is an illustration of a person in a suit climbing a large white arrow pointing upwards, symbolizing strategy and progress.

USE PUBLIC INPUT
TO DETERMINE
COMMUNITY DESIRES

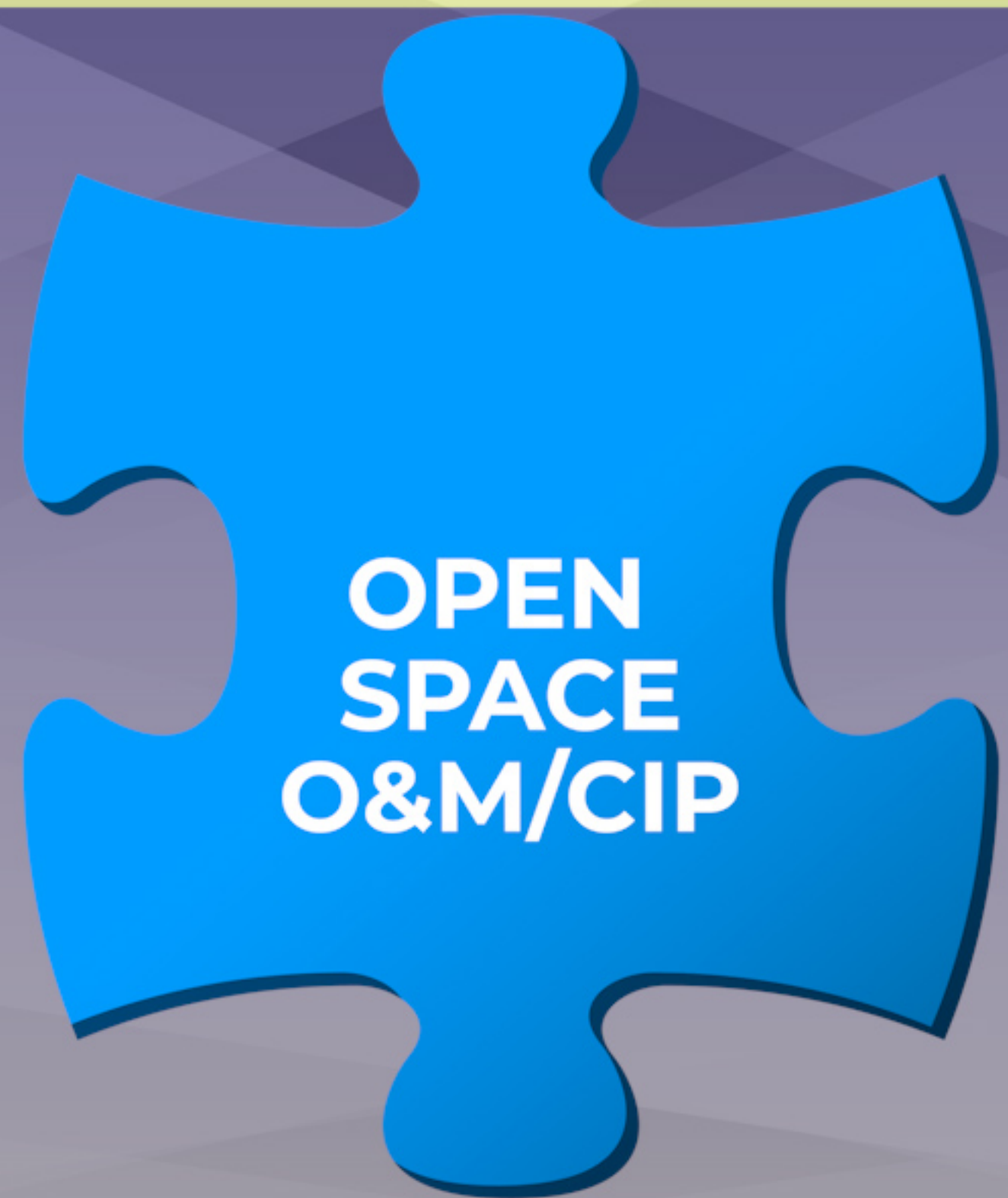
CREATE SUSTAINABLE
TRAILS AND
TRAILHEADS

MAINTAIN WHAT WE
HAVE TO THE HIGHEST
STANDARDS POSSIBLE

PARTNER WITH HISTORIC
RESOURCES TO PRESERVE
CULTURAL RESOURCES
ON OPEN SPACE LANDS

PROVIDE PUBLIC ACCESS
IN AREAS THAT PROTECT
NATURAL AND CULTURAL
RESOURCES

USE CRITERIA TO GUIDE
INFORMED DECISIONS



The background is a collage of four distinct images. The top-left image shows a weathered, two-story wooden barn with a brown roof, situated in a grassy field. The top-right image depicts a vast, open landscape with rolling hills and distant mountains under a clear sky. The bottom-left image features a modern building with a white, angular, and stepped roofline, set against a clear sky. The bottom-right image shows a person wearing a black helmet and sunglasses, climbing a large, light-colored rock formation. The text 'THIS is your COUNTY' is overlaid on the barn and rocky landscape images. The text 'Your OUTDOOR and HERITAGE SPACES' is overlaid on the rock climbing image. The text 'Join us and be a part of the investment and public engagement strategy.' is overlaid on the bottom of the collage.

THIS
is your
COUNTY

Your
OUTDOOR
and
**HERITAGE
SPACES**

Join us and be a part
of the investment and
public engagement strategy.