

# Protected Lands Map - B.3

## 2030 Parks, Trails and Open Space Master Plan

November 5, 2012

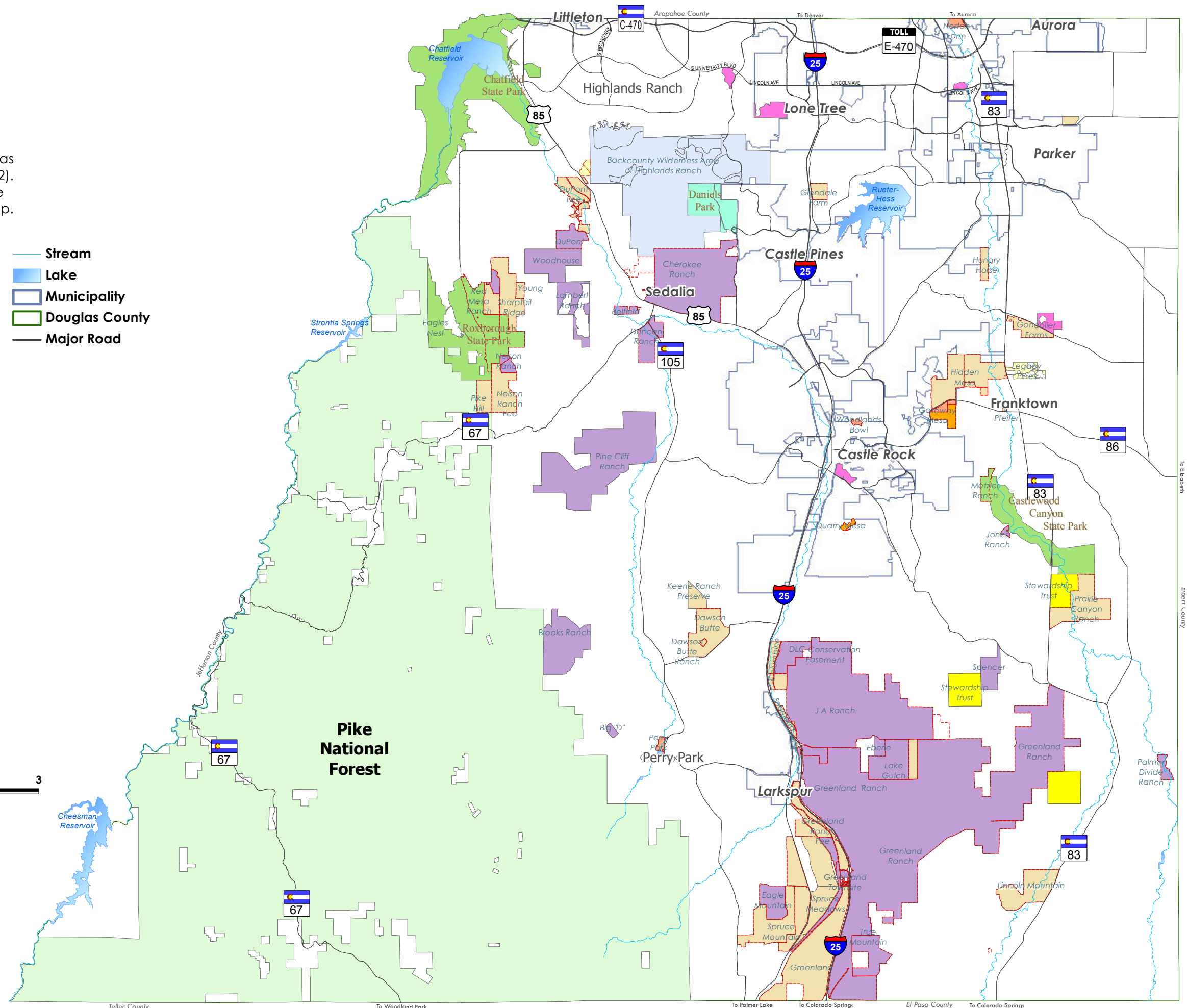
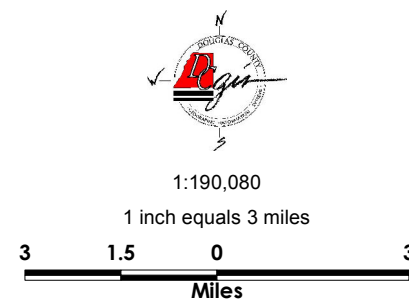
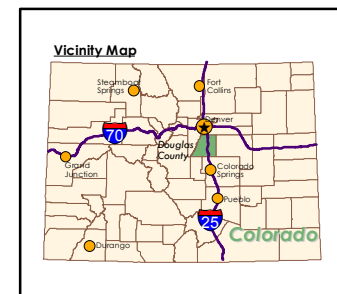
Public access within Douglas County Open Space areas is shown on the Parks and Trails Plan maps (B.1 and B.2). More detailed information is also available on the Douglas County Guide to Recreation map.

-  Douglas County Open Space Funds Used
  -  Backcountry Wilderness Area of Highlands Ranch
  -  Conservation Easement (No Public Access)
  -  Douglas County Fee Title
  -  Town/Metro District Open Space
  -  State Land Board
  -  Pike National Forest
  -  Douglas County Regional Park
  -  Daniels Park
  -  State Park
-  Stream
  -  Lake
  -  Municipality
  -  Douglas County
  -  Major Road

**\* Note:**

Several private properties protected with a conservation easement are not shown on this map.

Please call Douglas County Division of Open Space and Natural Resources for more information. (303-660-7495)



2030 PARKS, TRAILS, AND OPEN SPACE MASTER PLAN



A SUB-ELEMENT OF THE COMPREHENSIVE MASTER PLAN