

SCIENTIFIC AND CULTURAL FACILITIES DISTRICT

Douglas County, Colorado

Legend

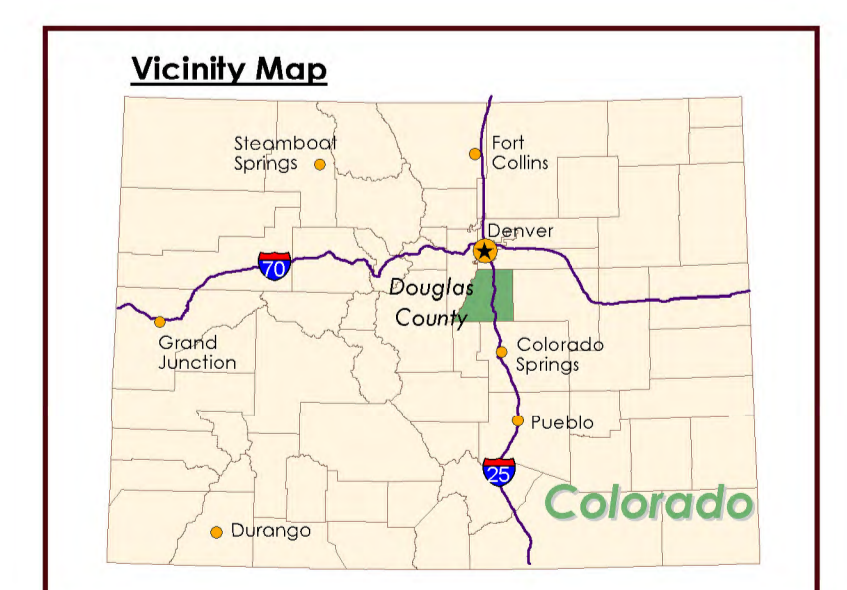
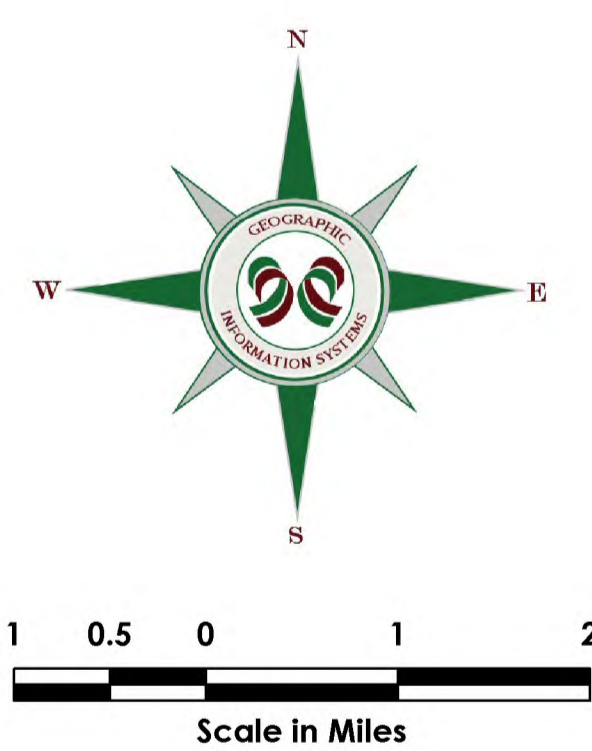
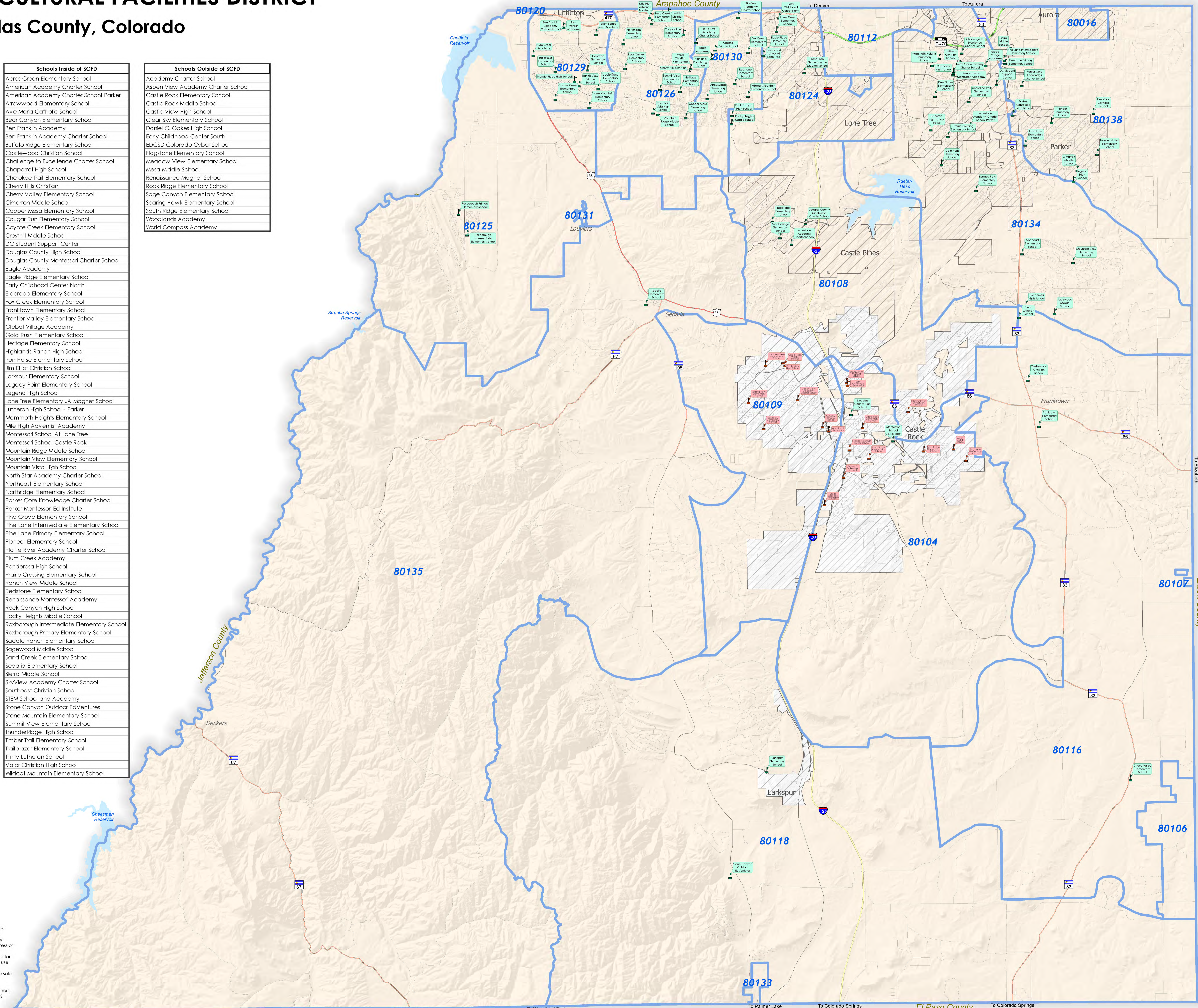
- Scientific and Cultural Facilities District
- Zip Code Boundary
- County Boundary
- Municipalities
- Lakes
- Intermittent Lakes
- Roads
- Interstate
- US Highway
- State Highway
- Toll Highway
- Major Road
- Local Road
- Gated Community
- Entrance/Exit Ramp

Schools Inside of SCFD

- Acres Green Elementary School
- American Academy Charter School
- American Academy Charter School Parker
- Arrowwood Elementary School
- Ave Maria Catholic School
- Bear Canyon Elementary School
- Ben Franklin Academy
- Ben Franklin Academy Charter School
- Buffalo Ridge Elementary School
- Castlewood Christian School
- Challenge to Excellence Charter School
- Chaparral High School
- Cherokee Trail Elementary School
- Cherry Hills Christian
- Cherry Valley Elementary School
- Cimarron Middle School
- Copper Mesa Elementary School
- Cougar Run Elementary School
- Coyote Creek Elementary School
- Cresthill Middle School
- DC Student Support Center
- Douglas County High School
- Douglas County Montessori Charter School
- Eagle Academy
- Eagle Ridge Elementary School
- Early Childhood Center North
- Eldorado Elementary School
- Fox Creek Elementary School
- Franktown Elementary School
- Frontier Valley Elementary School
- Global Village Academy
- Gold Rush Elementary School
- Heritage Elementary School
- Highlands Ranch High School
- Iron Horse Elementary School
- Jim Elliot Christian School
- Larkspur Elementary School
- Legacy Point Elementary School
- Legend High School
- Lone Tree Elementary...A Magnet School
- Lutheran High School - Parker
- Mammoth Heights Elementary School
- Mile High Adventist Academy
- Montessori School At Lone Tree
- Montessori School Castle Rock
- Mountain Ridge Middle School
- Mountain View Elementary School
- Mountain Vista High School
- North Star Academy Charter School
- Northeast Elementary School
- Northridge Elementary School
- Parker Core Knowledge Charter School
- Parker Montessori Ed Institute
- Pine Grove Elementary School
- Pine Lane Intermediate Elementary School
- Pine Lane Primary Elementary School
- Pioneer Elementary School
- Platte River Academy Charter School
- Plum Creek Academy
- Ponderosa High School
- Prairie Crossing Elementary School
- Ranch View Middle School
- Redstone Elementary School
- Renaissance Montessori Academy
- Rock Canyon High School
- Rocky Heights Middle School
- Roxborough Intermediate Elementary School
- Roxborough Primary Elementary School
- Saddle Ranch Elementary School
- Sagewood Middle School
- Sand Creek Elementary School
- Sedalia Elementary School
- Sierra Middle School
- SkyView Academy Charter School
- Southeast Christian School
- STEM School and Academy
- Stone Canyon Outdoor EdVentures
- Stone Mountain Elementary School
- Summit View Elementary School
- ThunderRidge High School
- Timber Trail Elementary School
- Tribalblazer Elementary School
- Trinity Lutheran School
- Valor Christian High School
- Wildcat Mountain Elementary School

Schools Outside of SCFD

- Academy Charter School
- Aspen View Academy Charter School
- Castle Rock Elementary School
- Castle Rock Middle School
- Castle View High School
- Clear Sky Elementary School
- Daniel C. Oakes High School
- Early Childhood Center South
- EDCSD Colorado Cyber School
- Flagstone Elementary School
- Meadow View Elementary School
- Mesa Middle School
- Renaissance Magnet School
- Rock Ridge Elementary School
- Sage Canyon Elementary School
- Soaring Hawk Elementary School
- South Ridge Elementary School
- Woodlands Academy
- World Compass Academy



DISCLAIMER:
 All data and information ("Products") contained herein are for informational purposes only. Although such Products are believed to be accurate at the time of printing, Douglas County does not warrant that such Products are error free. Douglas County provides these Products on an "as is" basis without warranties of any kind, either express or implied, including, but not limited to, warranties of title or implied warranties of merchantability or fitness for a particular purpose. Douglas County shall not be liable for any direct, indirect, incidental, special or consequential damages arising out of the use of such Products, or the inability to use such Products or out of any breach of any warranty. The user acknowledges and agrees that the use of such Products is at the sole risk of the user.

General questions about this or any other Douglas County GIS products, including errors, omissions, corrections and/or updates should be directed to the Douglas County GIS Services at (303) 660-7416.

Douglas County GIS Services
 Philip S. Miller Bldg., 100 Third St.
 Castle Rock, Colorado 80104