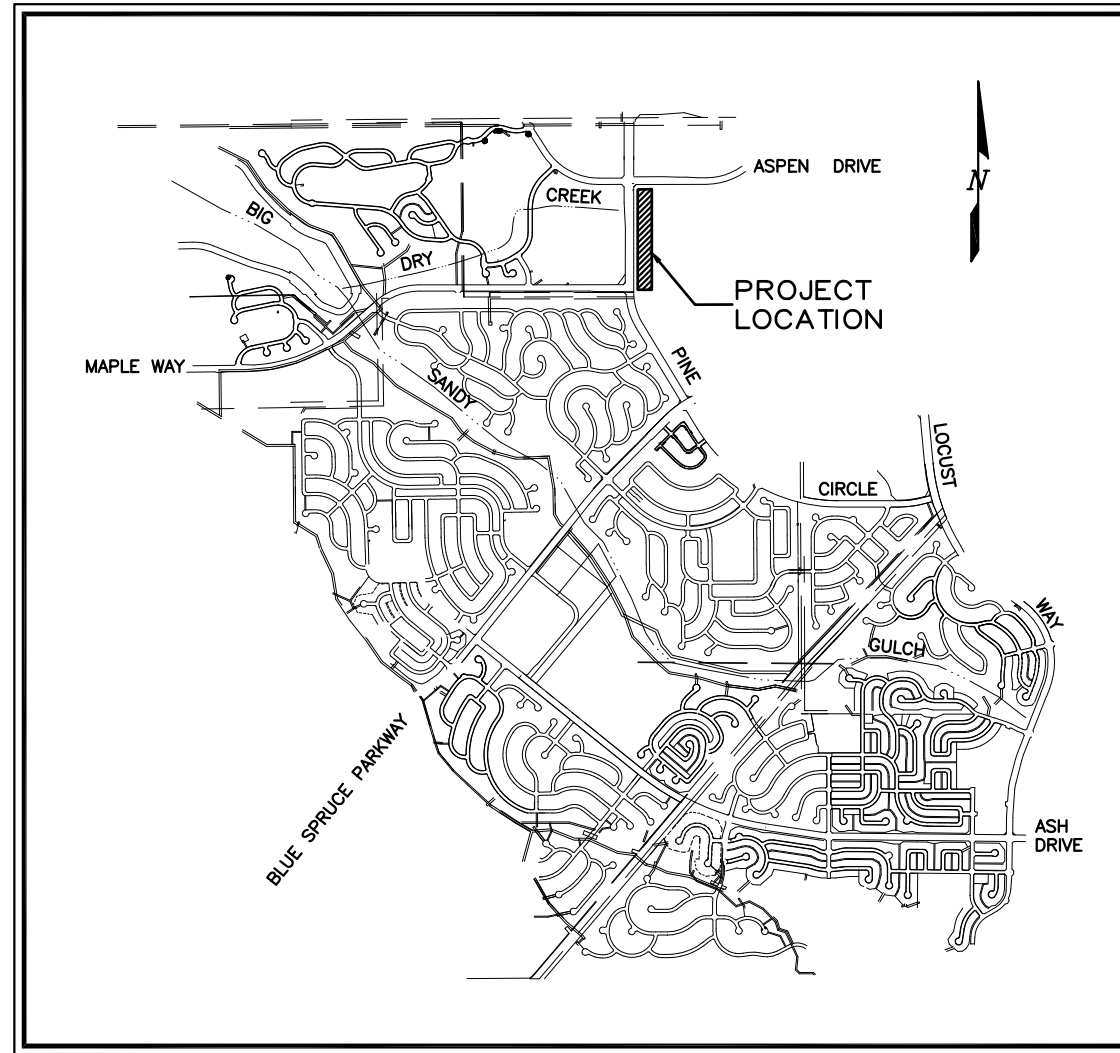


CONTRACT DRAWINGS FOR CONSTRUCTION OF  
**UTILITY  
 GRADING, EROSION AND SEDIMENT CONTROL PLAN**

EXAMPLE  
DOUGLAS COUNTY  
UTILITY GESC DRAWINGS



PROJECT LOCATION: SOUTHWEST QUARTER OF SECTION 9  
TOWNSHIP 6S, RANGE 68W

LOCATION MAP

SCALE 1"=1500'

THE GRADING, EROSION AND SEDIMENT CONTROL PLAN INCLUDED HEREIN HAS BEEN PLACED IN THE DOUGLAS COUNTY FILE FOR THIS PROJECT AND APPEARS TO FULFILL APPLICABLE DOUGLAS COUNTY GRADING, EROSION AND SEDIMENT CONTROL CRITERIA. ADDITIONAL GRADING, EROSION AND SEDIMENT CONTROL MEASURES MAY BE REQUIRED OF THE OWNER OR HIS OR HER AGENTS DUE TO UNFORESEEN EROSION PROBLEMS OR IF THE SUBMITTED PLAN DOES NOT FUNCTION AS INTENDED. THE REQUIREMENTS OF THIS PLAN SHALL RUN WITH THE LAND AND SHALL BE THE OBLIGATION OF THE LANDOWNER, OR HIS OR HER DESIGNATED REPRESENTATIVE, UNTIL SUCH TIME AS THE PLAN IS PROPERLY COMPLETED, MODIFIED OR VOIDED.

THE GRADING, EROSION AND SEDIMENT CONTROL PLAN INCLUDED HEREIN HAS BEEN PREPARED UNDER MY DIRECT SUPERVISION IN ACCORDANCE WITH THE REQUIREMENTS OF THE GRADING, EROSION, AND SEDIMENT CONTROL (GESC) MANUAL OF DOUGLAS COUNTY.

GESC PLANS PREPARED BY:

\_\_\_\_\_  
AUSTIN ENGINEERING COMPANY INC.      DATE \_\_\_\_\_      PE NUMBER \_\_\_\_\_

THE CONSTRUCTION PLANS INCLUDED HEREIN WERE PREPARED UNDER MY DIRECT SUPERVISION IN ACCORDANCE WITH THE REQUIREMENTS OF THE ROADWAY DESIGN AND CONSTRUCTION STANDARDS AND THE STORM DRAINAGE DESIGN AND TECHNICAL CRITERIA OF DOUGLAS COUNTY.

CONSTRUCTION PLANS PREPARED BY:

\_\_\_\_\_  
AUSTIN ENGINEERING COMPANY INC.      DATE \_\_\_\_\_      PE NUMBER \_\_\_\_\_

**CALL UTILITY NOTIFICATION  
CENTER OF COLORADO**  
**1-800-922-1987**  
 CALL 2-BUSINESS DAYS IN ADVANCE  
 BEFORE YOU DIG, GRADE, OR EXCAVATE  
 FOR THE MARKING OF UNDERGROUND  
 MEMBER UTILITIES.

LIST OF DRAWINGS		
SHEET	DRAWING NO	TITLE
GENERAL DRAWINGS		
1	G-1	COVER SHEET
GESC DRAWINGS		
2	U-1	UTILITY GESC PLAN
3	U-2	UTILITY GESC PLAN
GESC STANDARD NOTES AND DETAILS		
4	SHEET 1	GESC GENERAL NOTES AND LEGEND
5 - 16	SHEETS 2 - 13	GESC DETAILS AND INSTALLATION AND MAINTENANCE NOTES
17	SHEETS 14	ROCK AND RIPRAP GRADATIONS

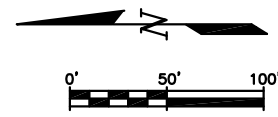
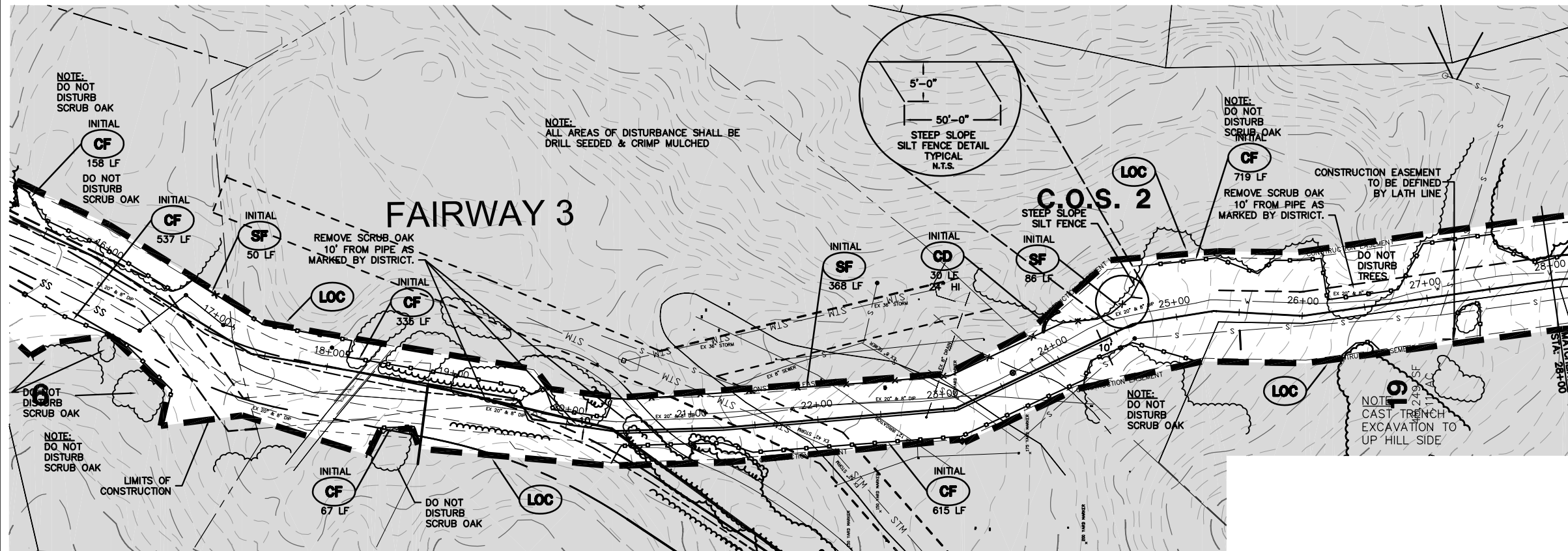
\_\_\_\_\_  
ASSISTANT DIRECTOR OF DEVELOPMENT REVIEW

\_\_\_\_\_  
DATE

THESE CONSTRUCTION DRAWINGS HAVE BEEN REVIEWED BY DOUGLAS COUNTY FOR GRADING, EROSION AND SEDIMENT CONTROL IMPROVEMENTS ONLY.

\_\_\_\_\_  
ENGINEERING DIVISION ACCEPTANCE BLOCK

<input type="checkbox"/> <input type="checkbox"/> <input type="checkbox"/> <input type="checkbox"/>	Sheet Revisions	<b>AUSTIN ENGINEERING CO., INC.</b> CONSULTING ENGINEERS 88 PLAZA DRIVE, SUITE 200 HIGHLANDS RANCH, COLORADO 80126 (303) 324-4897 FAX: (303) 324-4991	<b>JAMESTOWN DEVELOPMENT CO., INC.</b>  7901 GRANT STREET DENVER, COLORADO 80229 (303) 287-1722 FAX: (303) 289-1084	<b>UTILITY                  GESC PLAN</b>	<b>COVER SHEET</b>	DRAWING <b>G-1</b>
--	-----------------	--	--	---	--------------------	-----------------------



EXAMPLE DOUGLAS COUNTY UTILITY GESC DRAWINGS

- EXISTING 2' CONTOUR
  - EXISTING 10' CONTOUR
  - PROPOSED 2' CONTOUR
  - PROPOSED 10' CONTOUR
  - ⇒ FLOW DIRECTION ARROW
- AREA OUTSIDE LIMITS OF CONSTRUCTION
  - AREA TO BE DRILL SEEDED AND CRIMP MULCHED.

- NOTES:**
- SEE COVER SHEET OF DOUGLAS COUNTY STANDARD NOTES AND DETAILS (SHEET 1 OF 14) FOR LEGEND OF BMP NAMES AND SYMBOLS.
  - CONTROL POINT NO. 1: 3" BRASS CAP ON SOUTH CORNER OF WEST HEADWALL, USGS ELEVATION 5628.23.
  - SEE CONSTRUCTION PLANS FOR DETAILS OF PERMANENT DRAINAGE FACILITIES SUCH AS DETENTION FACILITIES, CULVERTS, STORM DRAINAGE AND INLET AND OUTLET PROTECTION.

**CALL UTILITY NOTIFICATION CENTER OF COLORADO**  
**1-800-922-1987**  
 CALL 2-BUSINESS DAYS IN ADVANCE BEFORE YOU DIG, GRADE, OR EXCAVATE FOR THE MARKING OF UNDERGROUND MEMBER UTILITIES.

ASSISTANT DIRECTOR OF DEVELOPMENT REVIEW

DATE

THESE CONSTRUCTION DRAWINGS HAVE BEEN REVIEWED BY DOUGLAS COUNTY FOR GRADING, EROSION AND SEDIMENT CONTROL IMPROVEMENTS ONLY.

ENGINEERING DIVISION ACCEPTANCE BLOCK

Sheet Revisions	

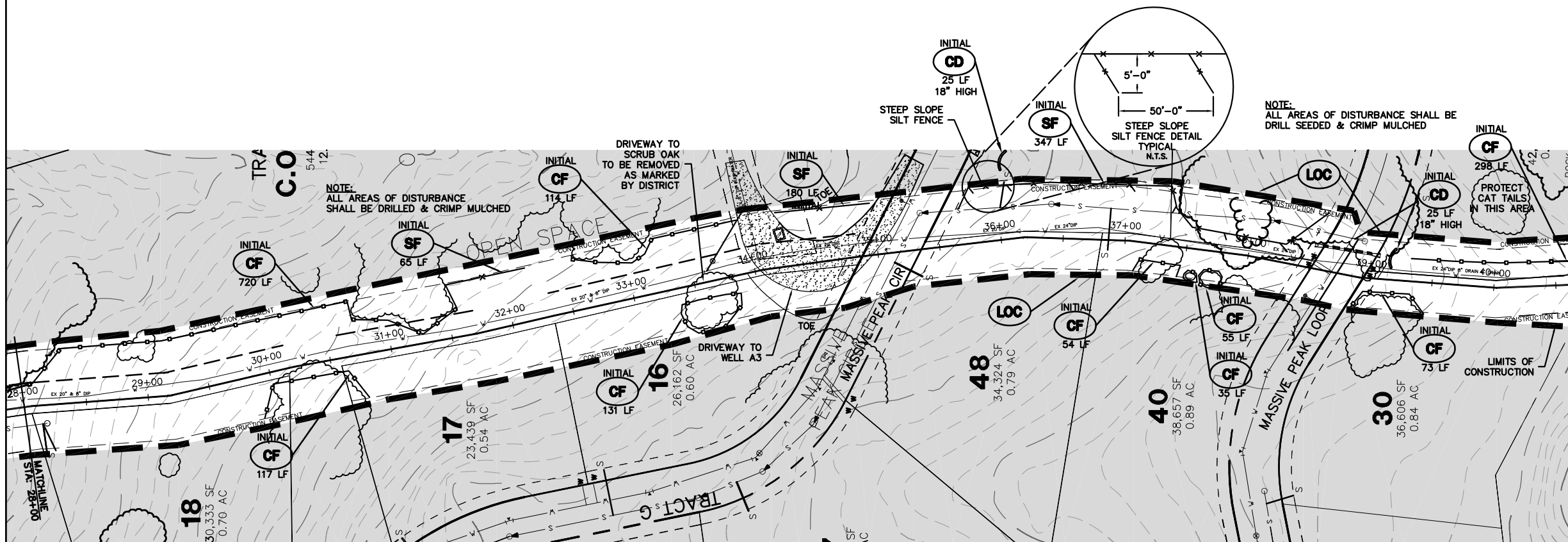
**AUSTIN ENGINEERING CO., INC.**  
 CONSULTING ENGINEERS  
 88 PLAZA DRIVE, SUITE 200  
 HIGHLANDS RANCH, COLORADO 80126  
 (303) 324-4897  
 FAX: (303) 324-4991

**JAMESTOWN DEVELOPMENT CO., INC.**  
 7901 GRANT STREET  
 DENVER, COLORADO 80229  
 (303) 287-1722  
 FAX: (303) 289-1084

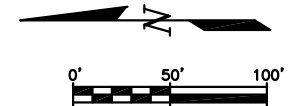
**UTILITY GESC PLAN**

**WATERLINE PLAN**

DRAWING  
**U-1**

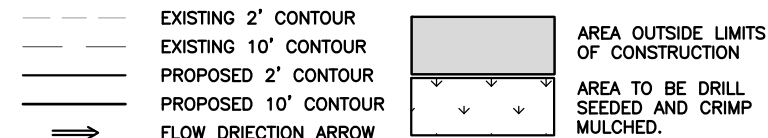


NOTE  
CAST TRENCH  
EXCAVATION TO  
UP HILL SIDE



NOTE  
CAST TRENCH  
EXCAVATION TO  
UP HILL SIDE

EXAMPLE  
DOUGLAS COUNTY  
UTILITY GESC DRAWINGS



- NOTES:**
- SEE COVER SHEET OF DOUGLAS COUNTY STANDARD NOTES AND DETAILS (SHEET 1 OF 14) FOR LEGEND OF BMP NAMES AND SYMBOLS.
  - CONTROL POINT NO. 1: 3" BRASS CAP ON SOUTH CORNER OF WEST HEADWALL, USGS ELEVATION 5628.23.
  - SEE CONSTRUCTION PLANS FOR DETAILS OF PERMANENT DRAINAGE FACILITIES SUCH AS DETENTION FACILITIES, CULVERTS, STORM DRAINAGE AND INLET AND OUTLET PROTECTION.

**CALL UTILITY NOTIFICATION  
CENTER OF COLORADO  
1-800-922-1987**

CALL 2-BUSINESS DAYS IN ADVANCE BEFORE YOU DIG, GRADE, OR EXCAVATE FOR THE MARKING OF UNDERGROUND MEMBER UTILITIES.

ASSISTANT DIRECTOR OF DEVELOPMENT REVIEW

DATE

THESE CONSTRUCTION DRAWINGS HAVE BEEN REVIEWED BY DOUGLAS COUNTY FOR GRADING, EROSION AND SEDIMENT CONTROL IMPROVEMENTS ONLY.

ENGINEERING DIVISION ACCEPTANCE BLOCK

Sheet Revisions	

**AUSTIN ENGINEERING CO., INC.**  
CONSULTING ENGINEERS  
88 PLAZA DRIVE, SUITE 200  
HIGHLANDS RANCH, COLORADO 80126  
(303) 324-4897  
FAX: (303) 324-4991

**JAMESTOWN DEVELOPMENT CO., INC.**

7901 GRANT STREET  
DENVER, COLORADO 80229  
(303) 287-1722  
FAX: (303) 289-1084

**UTILITY  
GESC PLAN**

**WATERLINE  
PLAN**

DRAWING  
**U-2**

# DOUGLAS COUNTY STANDARD GESc NOTES AND DETAILS TO GO HERE

Sheet Revisions	
000	
000	
000	

NOTE: SCALES SHOWN ARE FOR 22"x34" SHEETS; ADJUST ACCORDINGLY FOR 11"x17" SHEETS.



**GESc** GRADING, EROSION, AND SEDIMENT CONTROL

**GESc PLAN  
STANDARD NOTES  
AND DETAILS**

**SHEET  
1 OF 3**