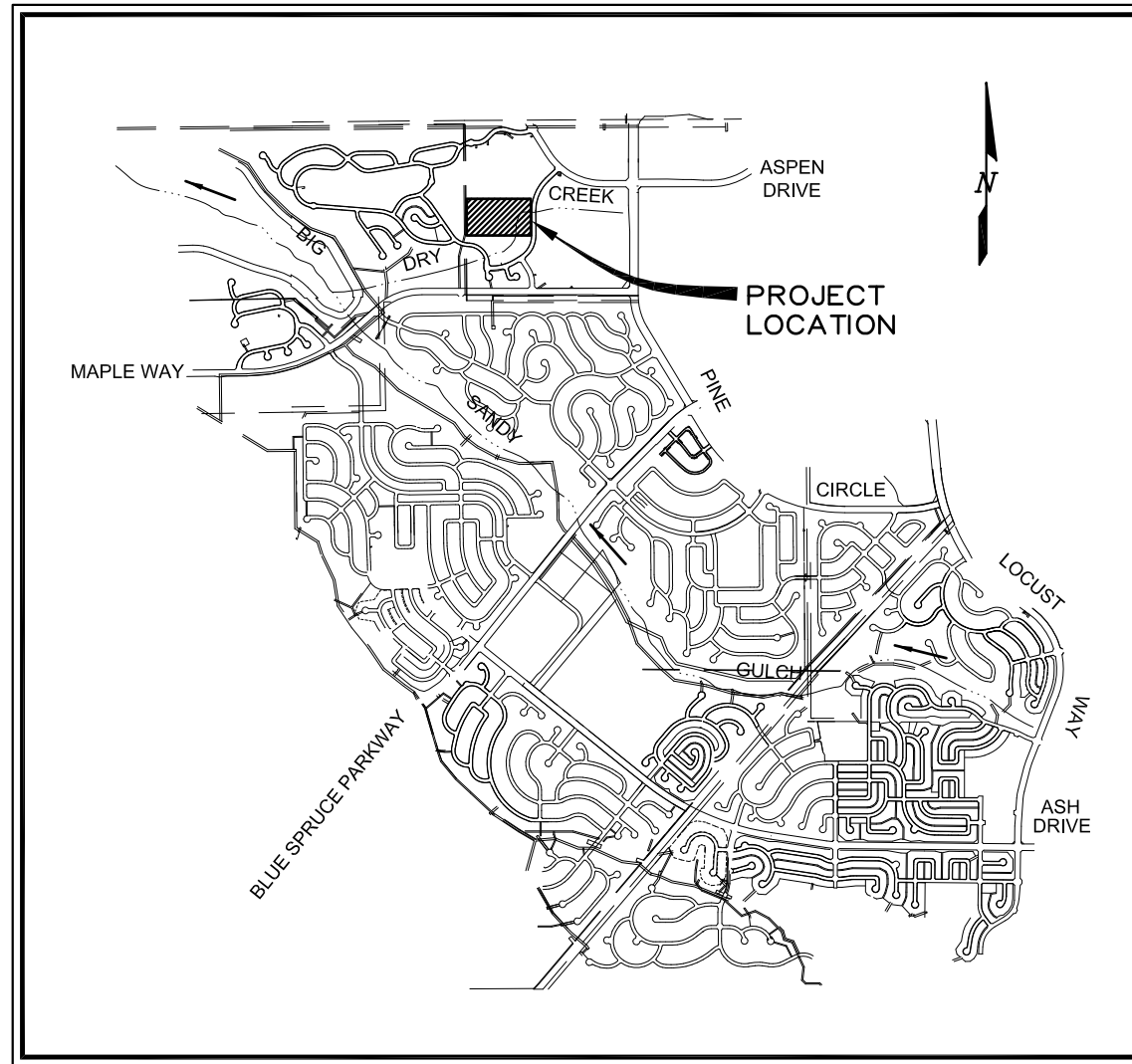


CONTRACT DRAWINGS FOR CONSTRUCTION OF  
**DRY CREEK BUSINESS PARK**  
**FILING NO. 1**  
**GRADING, EROSION AND SEDIMENT CONTROL PLAN**

EXAMPLE  
 DOUGLAS COUNTY  
 STAGED GESC DRAWINGS  
 (ONE GRADING PHASE)



PROJECT LOCATION: SOUTHWEST QUARTER OF SECTION 9  
 TOWNSHIP 6S, RANGE 68W

**LOCATION MAP**

SCALE 1"=1500'

**CALL UTILITY NOTIFICATION  
 CENTER OF COLORADO**  
**1-800-922-1987**  
 CALL 2-BUSINESS DAYS IN ADVANCE  
 BEFORE YOU DIG, GRADE, OR EXCAVATE  
 FOR THE MARKING OF UNDERGROUND  
 MEMBER UTILITIES.

LIST OF DRAWINGS		
SHEET	DRAWING NO	TITLE
GENERAL DRAWINGS		
1	G-1	COVER SHEET
GESC DRAWINGS		
2	E-1	INITIAL GESC PLAN
3	E-2	INTERIM GESC PLAN
4	E-3	FINAL GESC PLAN
GESC STANDARD NOTES AND DETAILS		
5	SHEET 1	GESC GENERAL NOTES AND LEGEND
6 - 17	SHEETS 2 - 13	GESC DETAILS AND INSTALLATION AND MAINTENANCE NOTES
18	SHEET 14	ROCK AND RIPRAP GRADATIONS

THE GRADING, EROSION AND SEDIMENT CONTROL PLAN INCLUDED HEREIN HAS BEEN PLACED IN THE DOUGLAS COUNTY FILE FOR THIS PROJECT AND APPEARS TO FULFILL APPLICABLE DOUGLAS COUNTY GRADING, EROSION AND SEDIMENT CONTROL CRITERIA. ADDITIONAL GRADING, EROSION AND SEDIMENT CONTROL MEASURES MAY BE REQUIRED OF THE OWNER OR HIS OR HER AGENTS DUE TO UNFORESEEN EROSION PROBLEMS OR IF THE SUBMITTED PLAN DOES NOT FUNCTION AS INTENDED. THE REQUIREMENTS OF THIS PLAN SHALL RUN WITH THE LAND AND SHALL BE THE OBLIGATION OF THE LANDOWNER, OR HIS OR HER DESIGNATED REPRESENTATIVE, UNTIL SUCH TIME AS THE PLAN IS PROPERLY COMPLETED, MODIFIED OR VOIDED.

THE GRADING, EROSION AND SEDIMENT CONTROL PLAN INCLUDED HEREIN HAS BEEN PREPARED UNDER MY DIRECT SUPERVISION IN ACCORDANCE WITH THE REQUIREMENTS OF THE GRADING, EROSION, AND SEDIMENT CONTROL (GESC) MANUAL OF DOUGLAS COUNTY.

GESC PLANS PREPARED BY:

\_\_\_\_\_  
 AUSTIN ENGINEERING COMPANY INC.      DATE      PE NUMBER

THE CONSTRUCTION PLANS INCLUDED HEREIN WERE PREPARED UNDER MY DIRECT SUPERVISION IN ACCORDANCE WITH THE REQUIREMENTS OF THE ROADWAY DESIGN AND CONSTRUCTION STANDARDS AND THE STORM DRAINAGE DESIGN AND TECHNICAL CRITERIA OF DOUGLAS COUNTY.

CONSTRUCTION PLANS PREPARED BY:

\_\_\_\_\_  
 AUSTIN ENGINEERING COMPANY INC.      DATE      PE NUMBER

\_\_\_\_\_  
 ASSISTANT DIRECTOR OF DEVELOPMENT REVIEW

DATE

THESE CONSTRUCTION DRAWINGS HAVE BEEN REVIEWED BY DOUGLAS COUNTY FOR GRADING, EROSION AND SEDIMENT CONTROL IMPROVEMENTS ONLY.

ENGINEERING DIVISION ACCEPTANCE BLOCK

Sheet Revisions	

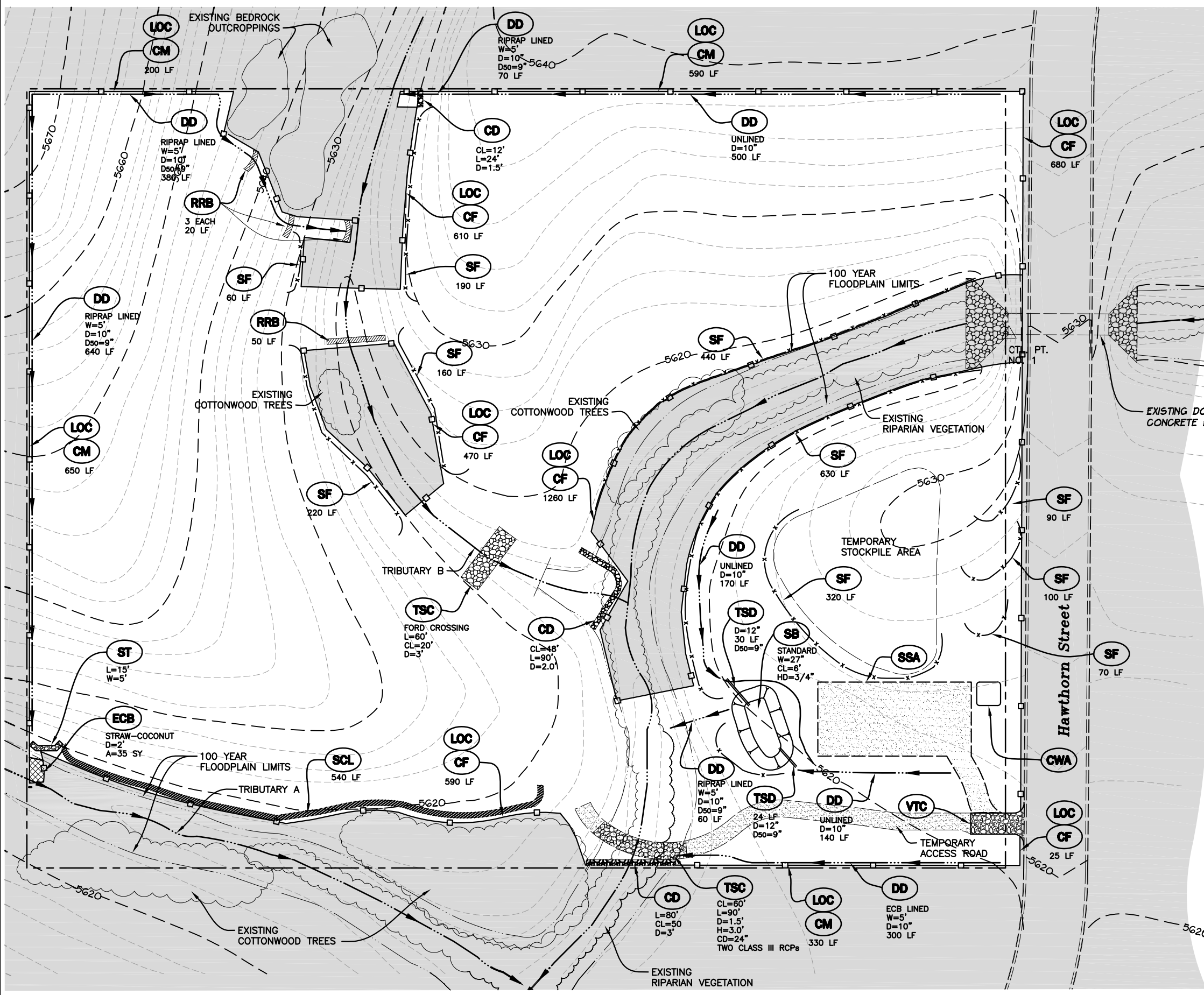
**AUSTIN ENGINEERING CO., INC.**  
 CONSULTING ENGINEERS  
 88 PLAZA DRIVE, SUITE 200  
 HIGHLANDS RANCH, COLORADO 80126  
 (303) 324-4897  
 FAX: (303) 324-4991

**JAMESTOWN DEVELOPMENT CO., INC.**  
 7901 GRANT STREET  
 DENVER, COLORADO 80229  
 (303) 287-1722  
 FAX: (303) 289-1084

**DRY CREEK  
 BUSINESS PARK  
 FILING NO. 1**

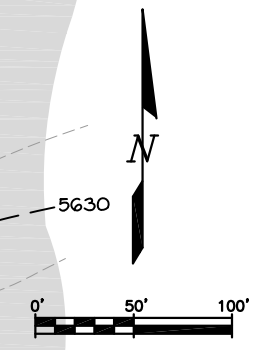
**COVER SHEET**

DRAWING  
**G-1**



**BMP LEGEND**

- CD CHECK DAM
- CB COMPOST BLANKET
- CFB COMPOST FILTER BERM
- CWA CONCRETE WASHOUT AREA
- CF CONSTRUCTION FENCE
- CM CONSTRUCTION MARKER
- DW DEWATERING
- DD DIVERSION DITCH
- ECB EROSION CONTROL BLANKET
- IP INLET PROTECTION
- RCD REINFORCED CHECK DAM
- RRB REINFORCED ROCK BERM
- RRC RRB FOR CULVERT PROTECTION
- SB SEDIMENT BASIN
- SCL SEDIMENT CONTROL LOG
- ST SEDIMENT TRAP
- SM SEEDING AND MULCHING
- SF SILT FENCE
- SSA STABILIZED STAGING AREA
- SR SURFACE ROUGHENING
- TSD TEMPORARY SLOPE DRAIN
- TSC TEMPORARY STREAM CROSSING
- TER TERRACING
- VTC VEHICLE TRACKING CONTROL
- WW VTC WITH WHEEL WASH
- LOC ROCK AND RIPRAP GRADATIONS
- LOC LIMITS OF CONSTRUCTION



- EXISTING 2' CONTOUR
- EXISTING 10' CONTOUR
- PROPOSED 2' CONTOUR
- PROPOSED 10' CONTOUR
- FLOW DIRECTION ARROW
- AREA OUTSIDE LIMITS OF CONSTRUCTION

**NOTES:**  
 1.) SEE COVER SHEET OF DOUGLAS COUNTY STANDARD NOTES AND DETAILS (SHEET 1 OF 14) FOR LEGEND OF BMP NAMES AND SYMBOLS.  
 2.) SHADED AREAS OUTSIDE LIMITS OF CONSTRUCTION SHALL NOT BE DISTURBED. CONSTRUCTION FENCE OR CONSTRUCTION MARKERS TO DELINEATE LIMITS OF CONSTRUCTION SHALL BE INSTALLED PRIOR TO ANY OTHER WORK ON SITE.  
 3.) CONTROL POINT NO. 1: 3" BRASS CAP ON SOUTH CORNER OF WEST HEADWALL, USGS ELEVATION 5628.23.

ASSISTANT DIRECTOR OF DEVELOPMENT REVIEW

DATE \_\_\_\_\_

THESE CONSTRUCTION DRAWINGS HAVE BEEN REVIEWED BY DOUGLAS COUNTY FOR GRADING, EROSION AND SEDIMENT CONTROL IMPROVEMENTS ONLY.

ENGINEERING DIVISION ACCEPTANCE BLOCK

Sheet Revisions	
	DOUGLAS COUNTY REVISIONS 5/06

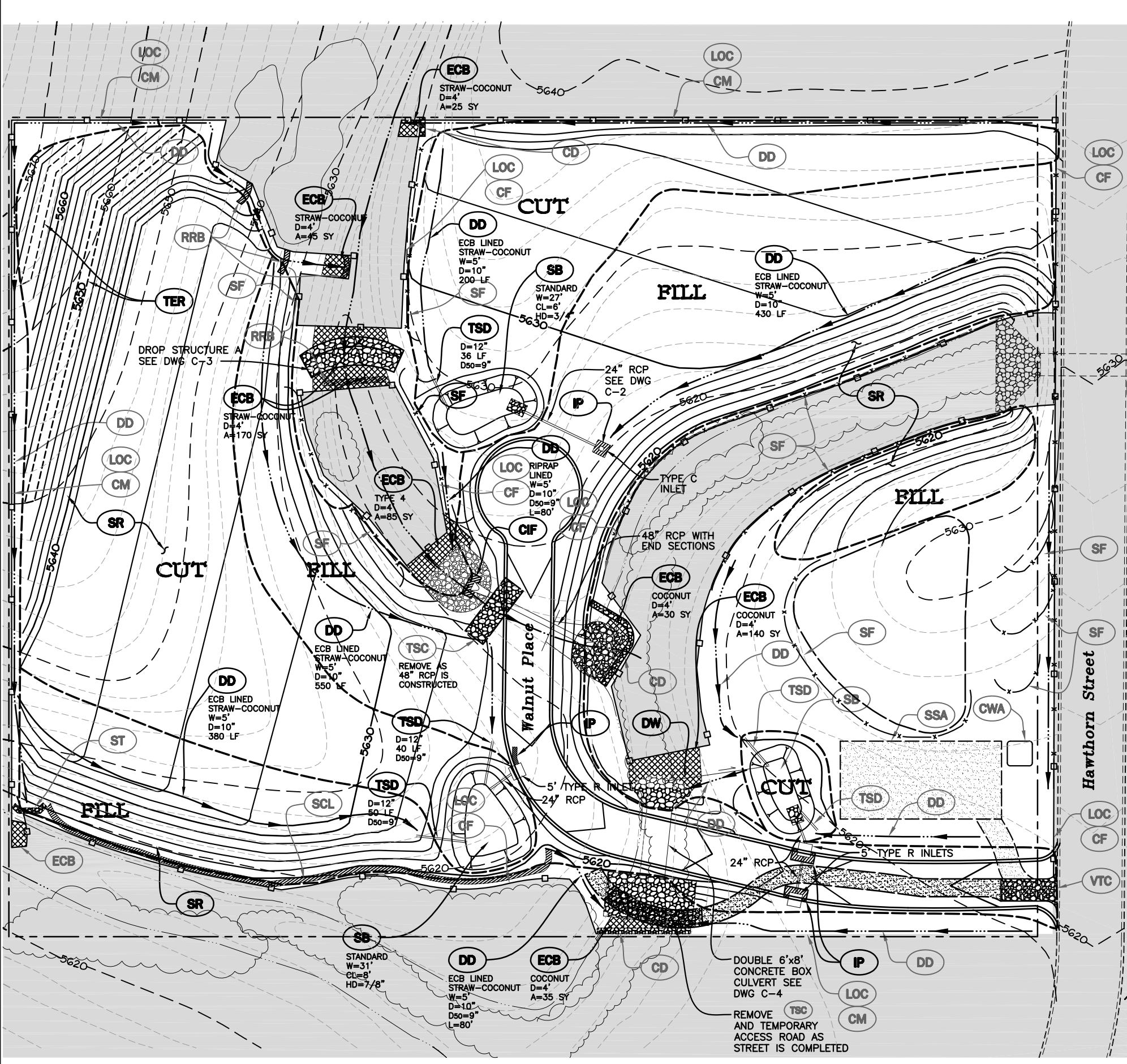
**AUSTIN ENGINEERING CO., INC.**  
 CONSULTING ENGINEERS  
 88 PLAZA DRIVE, SUITE 200  
 HIGHLANDS RANCH, COLORADO 80126  
 (303) 324-4897  
 FAX: (303) 324-4991

**JAMESTOWN DEVELOPMENT CO., INC.**  
 7901 GRANT STREET  
 DENVER, COLORADO 80229  
 (303) 287-1722  
 FAX: (303) 289-1084

**DRY CREEK  
 BUSINESS PARK  
 FILING NO. 1**

**INITIAL GESC PLAN**

DRAWING  
**E-1**



**BMP LEGEND**

	<b>CD</b> CHECK DAM
	<b>CB</b> COMPOST BLANKET
	<b>CFB</b> COMPOST FILTER BERM
	<b>CWA</b> CONCRETE WASHOUT AREA
	<b>CF</b> CONSTRUCTION FENCE
	<b>CM</b> CONSTRUCTION MARKER
	<b>DW</b> DEWATERING
	<b>DD</b> DIVERSION DITCH
	<b>ECB</b> EROSION CONTROL BLANKET
	<b>IP</b> INLET PROTECTION
	<b>RCD</b> REINFORCED CHECK DAM
	<b>RRB</b> REINFORCED ROCK BERM
	<b>RRC</b> RRB FOR CULVERT PROTECTION
	<b>SB</b> SEDIMENT BASIN
	<b>SCL</b> SEDIMENT CONTROL LOG
	<b>ST</b> SEDIMENT TRAP
	<b>SM</b> SEEDING AND MULCHING
	<b>SF</b> SILT FENCE
	<b>SSA</b> STABILIZED STAGING AREA
	<b>SR</b> SURFACE ROUGHENING
	<b>TSD</b> TEMPORARY SLOPE DRAIN
	<b>TSC</b> TEMPORARY STREAM CROSSING
	<b>TER</b> TERRACING
	<b>VTC</b> VEHICLE TRACKING CONTROL
	<b>WW</b> VTC WITH WHEEL WASH
	<b>LOC</b> LIMITS OF CONSTRUCTION

**NOTES:**

- SEE COVER SHEET OF DOUGLAS COUNTY STANDARD NOTES AND DETAILS (SHEET 1 OF 14) FOR LEGEND OF BMP NAMES AND SYMBOLS.
- SHADED AREAS OUTSIDE LIMITS OF CONSTRUCTION SHALL NOT BE DISTURBED. CONSTRUCTION FENCE OR CONSTRUCTION MARKERS TO DELINEATE LIMITS OF CONSTRUCTION SHALL BE INSTALLED PRIOR TO ANY OTHER WORK ON SITE.
- SHADED BMPs WERE INSTALLED IN PHASE 1 AND SHALL BE LEFT IN PLACE IN PHASE 2.
- ALL INTERIM BMPs, INCLUDING SEEDING AND MULCHING OF DISTURBED AREAS, MUST BE COMPLETED PRIOR TO ISSUANCE OF ANY CURB AND GUTTER PERMITS.
- EARTHWORK SUMMARY:  
 TOPSOIL STRIPPING AND REPLACEMENT: 10,500 CY  
 EXCAVATION: 25,400 CY  
 EMBANKMENT: 24,000 CY  
 ASSUMED SHRINKAGE: 5-PERCENT  
 EARTHWORK IS EXPECTED TO BALANCE ON SITE.
- SEE CONSTRUCTION PLANS FOR DETAILS OF PERMANENT DRAINAGE FACILITIES SUCH AS DETENTION FACILITIES, CULVERTS, STORM DRAINS, AND INLET AND OUTLET PROTECTION.
- CONTROL POINTS NO. 1: 3" BRASS CAP ON SOUTH CORNER OF WEST HEADWALL USGS ELEVATION 5628.23.

EXISTING 2' CONTOUR  
 EXISTING 10' CONTOUR  
 PROPOSED 2' CONTOUR  
 PROPOSED 10' CONTOUR  
 FLOW DIRECTION ARROW

AREA OUTSIDE LIMITS OF CONSTRUCTION

ASSISTANT DIRECTOR OF DEVELOPMENT REVIEW

DATE

THESE CONSTRUCTION DRAWINGS HAVE BEEN REVIEWED BY DOUGLAS COUNTY FOR GRADING, EROSION AND SEDIMENT CONTROL IMPROVEMENTS ONLY.

ENGINEERING DIVISION ACCEPTANCE BLOCK

Sheet Revisions	

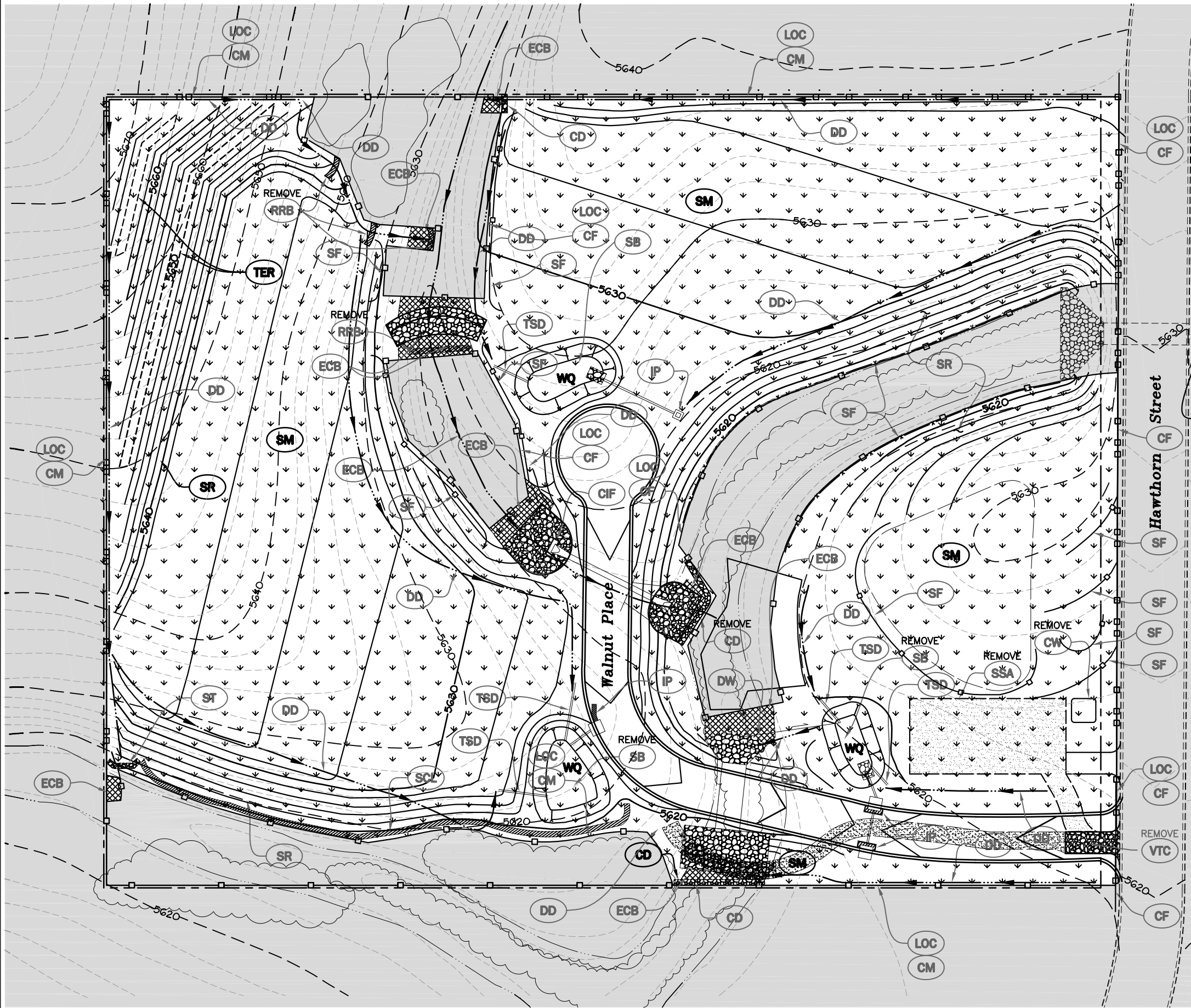
**AUSTIN ENGINEERING CO., INC.**  
 CONSULTING ENGINEERS  
 88 PLAZA DRIVE, SUITE 200  
 HIGHLANDS RANCH, COLORADO 80126  
 (303) 324-4897  
 FAX: (303) 324-4991

**JAMESTOWN DEVELOPMENT CO., INC.**  
 7901 GRANT STREET  
 DENVER, COLORADO 80229  
 (303) 287-1722  
 FAX: (303) 289-1084

**DRY CREEK  
 BUSINESS PARK  
 FILING NO. 1**

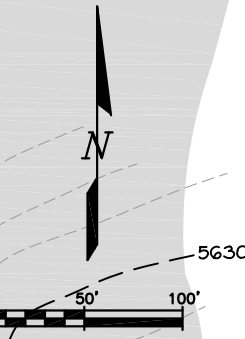
**INTERIM GESC PLAN**

DRAWING  
**E-2**



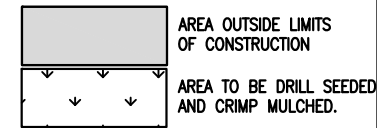
**BMP LEGEND**

- CD** CHECK DAM
- CB** COMPOST BLANKET
- CFB** COMPOST FILTER BERM
- CWA** CONCRETE WASHOUT AREA
- CF** CONSTRUCTION FENCE
- CM** CONSTRUCTION MARKER
- DW** DEWATERING
- DD** DIVERSION DITCH
- ECB** EROSION CONTROL BLANKET
- IP** INLET PROTECTION
- RCD** REINFORCED CHECK DAM
- RRB** REINFORCED ROCK BERM
- RRC** RRB FOR CULVERT PROTECTION
- SB** SEDIMENT BASIN
- SCL** SEDIMENT CONTROL LOG
- ST** SEDIMENT TRAP
- SM** SEEDING AND MULCHING
- SF** SILT FENCE
- SSA** STABILIZED STAGING AREA
- SR** SURFACE ROUGHENING
- TSD** TEMPORARY SLOPE DRAIN
- TSC** TEMPORARY STREAM CROSSING
- TER** TERRACING
- VTC** VEHICLE TRACKING CONTROL
- VTC** VTC WITH WHEEL WASH
- RR** ROCK AND RIPRAP GRADATIONS
- LOC** LIMITS OF CONSTRUCTION



EXISTING DOUBLE 6' x 8' CONCRETE BOX CULVERT

- EXISTING 2' CONTOUR
- EXISTING 10' CONTOUR
- PROPOSED 2' CONTOUR
- PROPOSED 10' CONTOUR
- FLOW DIRECTION ARROW



**NOTES:**  
 1.) SEE COVER SHEET OF DOUGLAS COUNTY STANDARD NOTES AND DETAILS (SHEET 1 OF 14) FOR LEGEND OF BMP NAMES AND SYMBOLS  
 2.) SHADED AREAS OUTSIDE LIMITS OF CONSTRUCTION SHALL NOT BE DISTURBED. CONSTRUCTION FENCE OR CONSTRUCTION MARKERS SHALL DELINEATE LIMITS OF CONSTRUCTION SHALL BE INSTALLED PRIOR TO ANY OTHER WORK ON SITE.  
 3.) CONTROL POINT NO. 1: 3" BRASS CAP ON SOUTH CORNER OF WEST HEADWALL, USGS ELEVATION 5628.23.

ASSISTANT DIRECTOR OF DEVELOPMENT REVIEW

DATE

THESE CONSTRUCTION DRAWINGS HAVE BEEN REVIEWED BY DOUGLAS COUNTY FOR GRADING, EROSION AND SEDIMENT CONTROL IMPROVEMENTS ONLY.

ENGINEERING DIVISION ACCEPTANCE BLOCK

Sheet Revisions	

**AUSTIN ENGINEERING CO., INC.**  
 CONSULTING ENGINEERS  
 88 PLAZA DRIVE, SUITE 200  
 HIGHLANDS RANCH, COLORADO 80126  
 (303) 324-4897  
 FAX: (303) 324-4991

**JAMESTOWN DEVELOPMENT CO., INC.**  
 7901 GRANT STREET  
 DENVER, COLORADO 80229  
 (303) 287-1722  
 FAX: (303) 289-1084

**DRY CREEK  
 BUSINESS PARK  
 FILING NO. 1**

**FINAL GESC PLAN**

DRAWING  
**E-3**

# DOUGLAS COUNTY STANDARD GESc NOTES AND DETAILS TO GO HERE

Sheet Revisions	
000	
000	
000	

NOTE: SCALES SHOWN ARE FOR 22"x34" SHEETS; ADJUST ACCORDINGLY FOR 11"x17" SHEETS.



**GESc** GRADING, EROSION, AND SEDIMENT CONTROL

**GESc PLAN  
STANDARD NOTES  
AND DETAILS**

**SHEET  
1 OF 3**