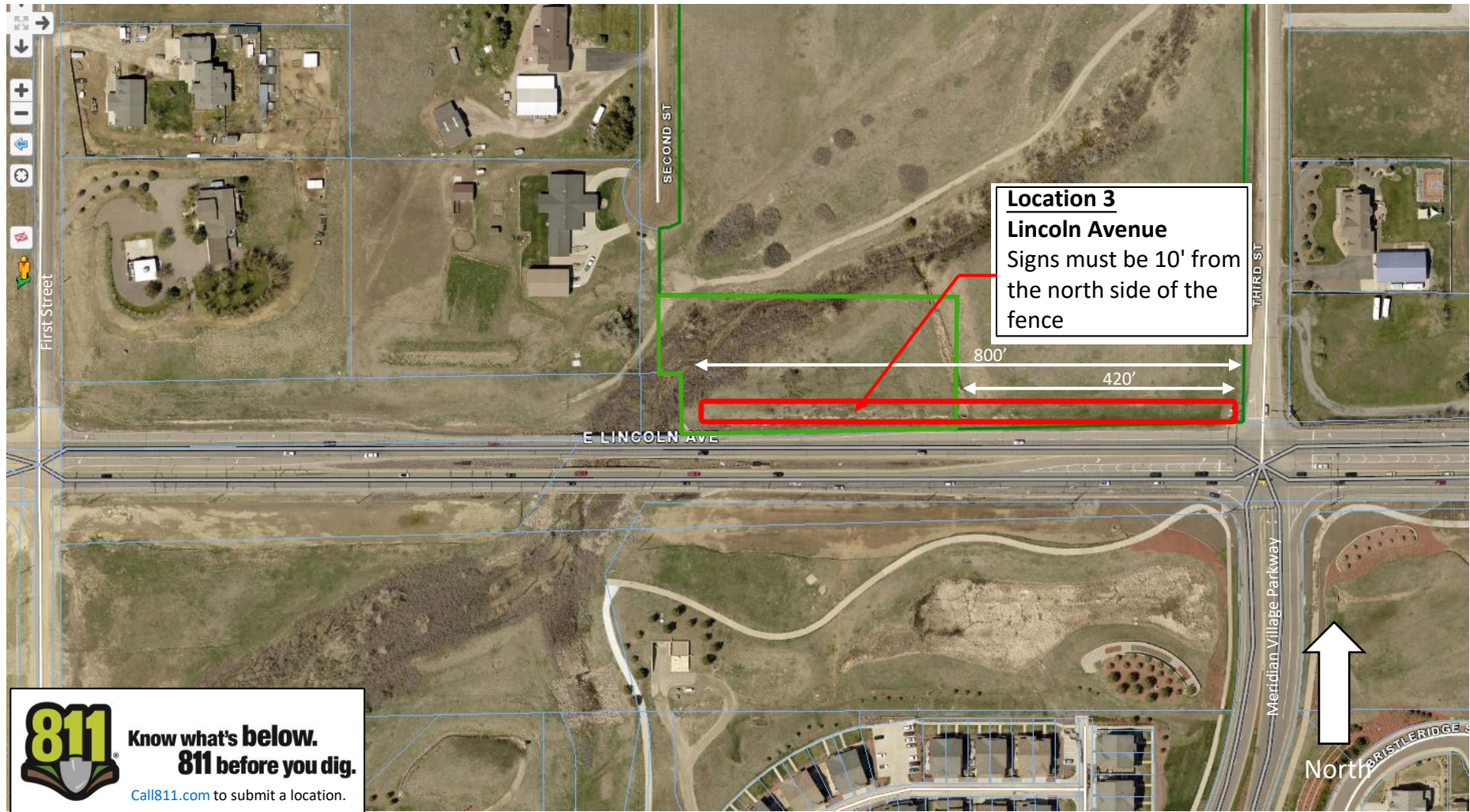


 Temporary Sign Locations





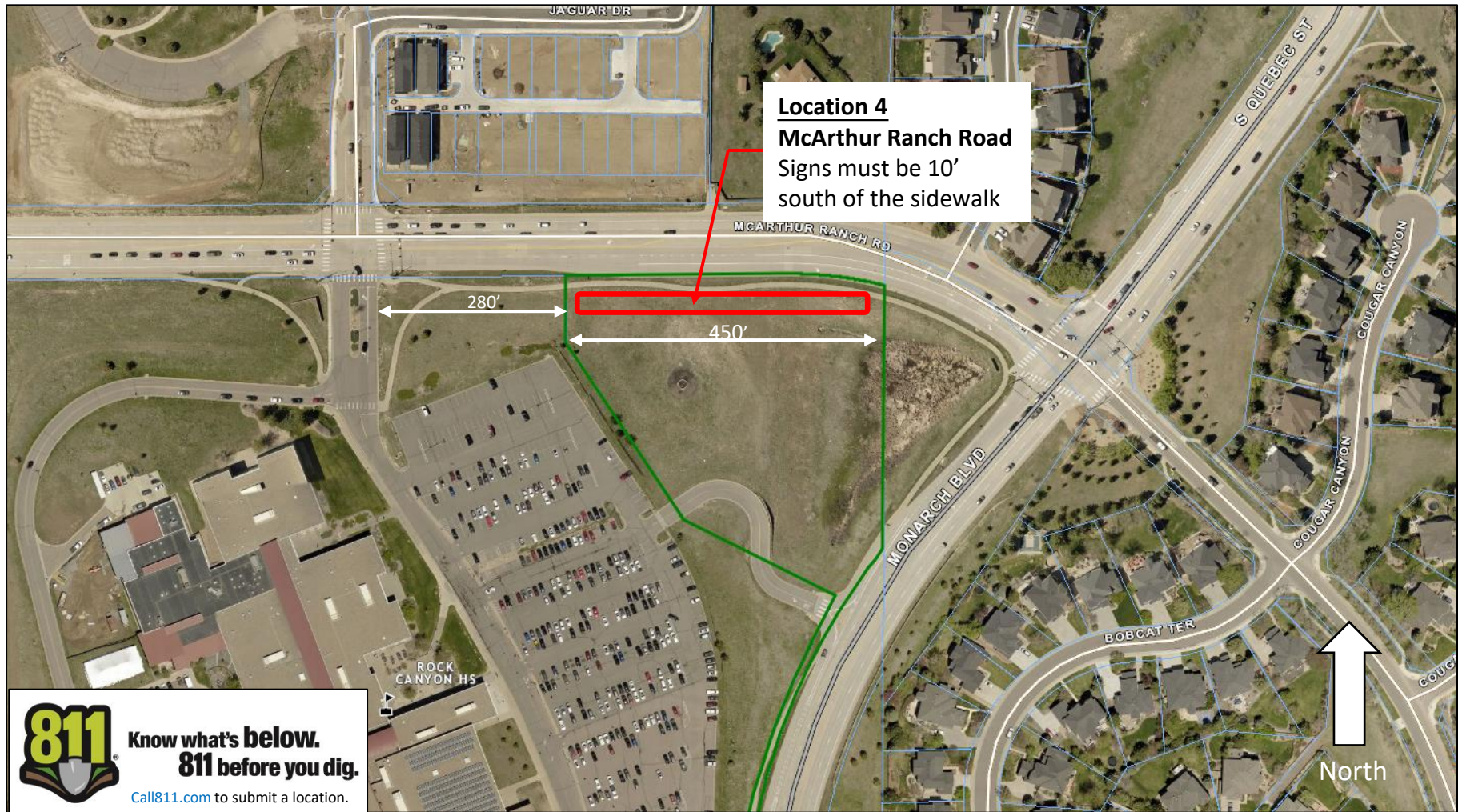
**Know what's below.  
811 before you dig.**

Call [811.com](http://811.com) to submit a location.



**Temporary Sign Locations**





 Temporary Sign Locations



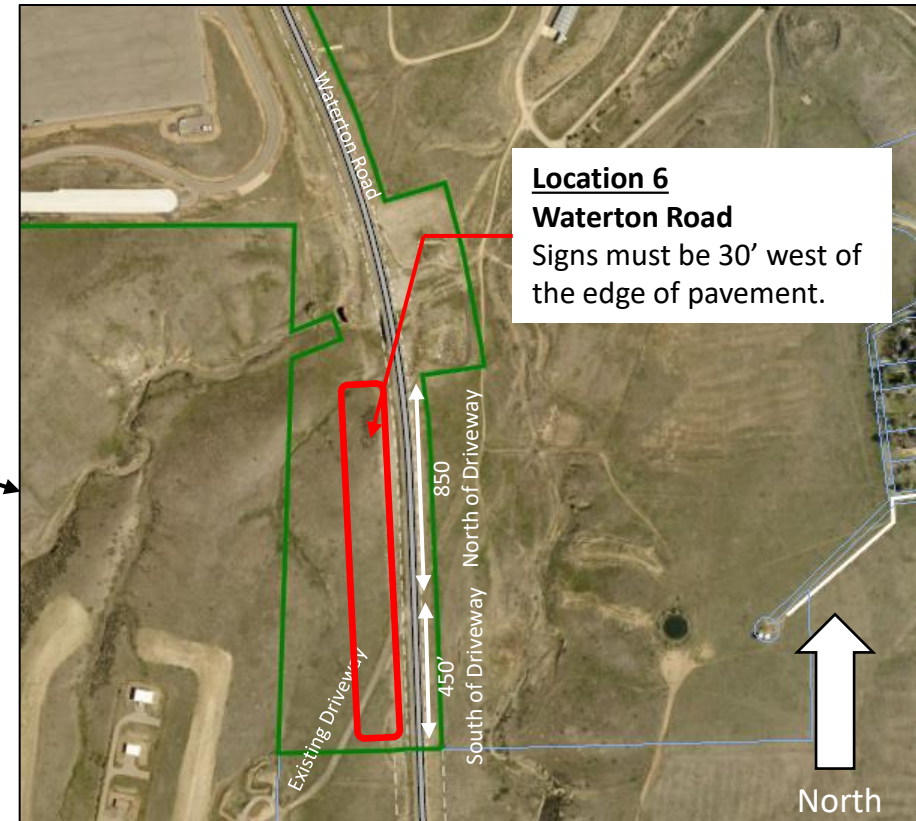
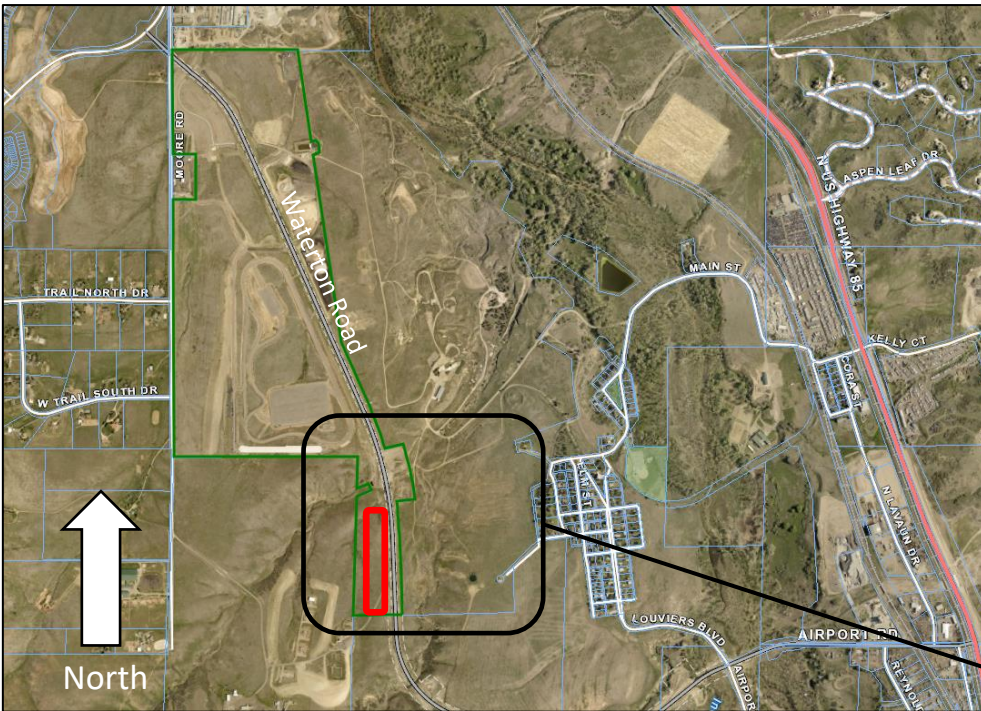


Call811.com to submit a location.

North

 Temporary Sign Locations





**Location 6**

**Waterton Road**

Signs must be 30' west of the edge of pavement.



**Know what's below.  
811 before you dig.**

Call [811.com](http://811.com) to submit a location.

 Temporary Sign Locations