

# WILDFIRE MITIGATION

An investment in our communities  
May 17, 2022





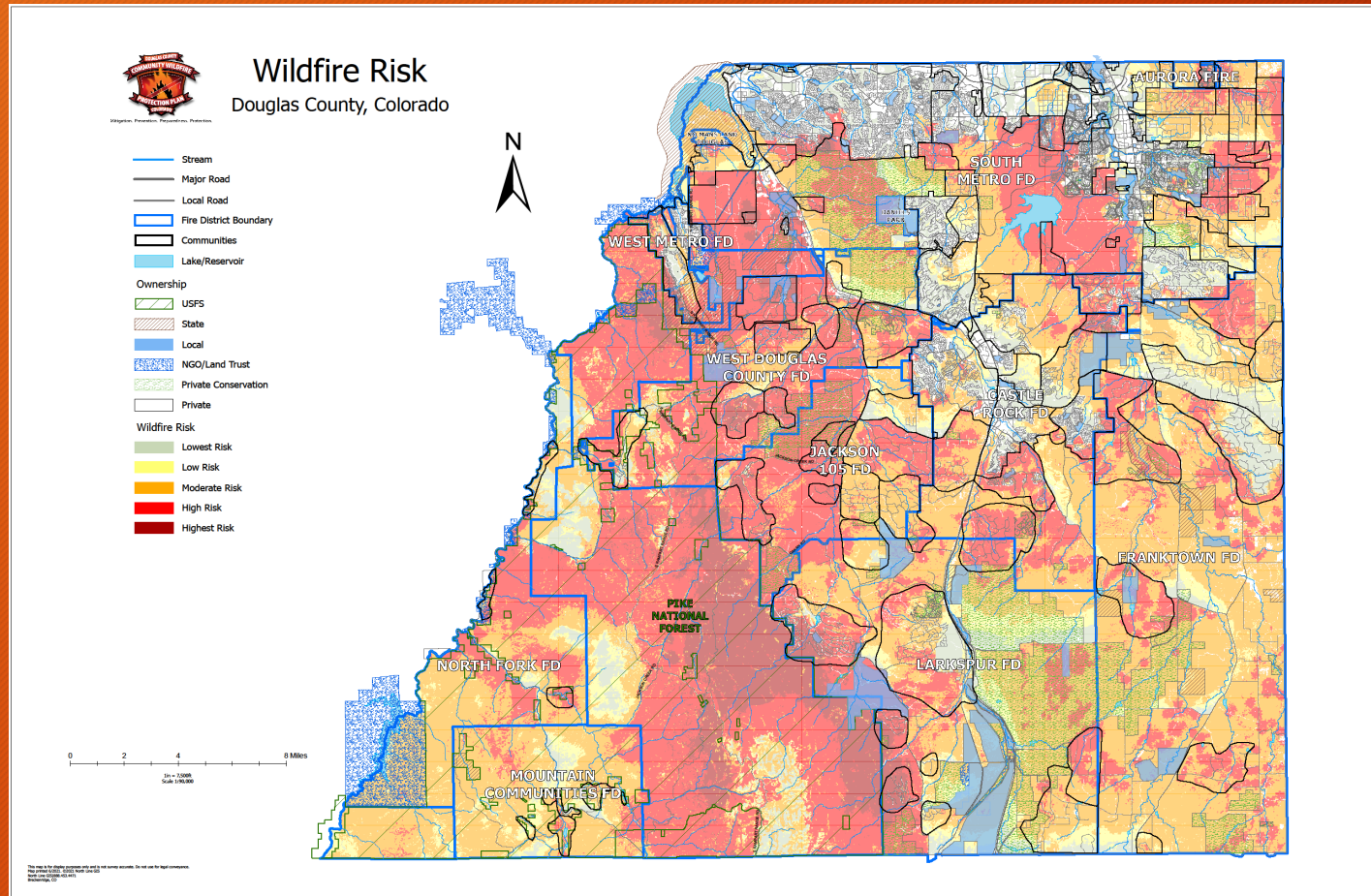
# WILDFIRE MITIGATION

- PROBLEM: More than two-thirds of unincorporated Douglas County (540,000 acres) is at significant risk from catastrophic wildfires
- Pike National Forest - 146,000 acres
- Open Space - 17,000+ acres
- Private Land - 377,000 acres





# County-Wide Wildfire Risk





# WILDFIRE MITIGATION

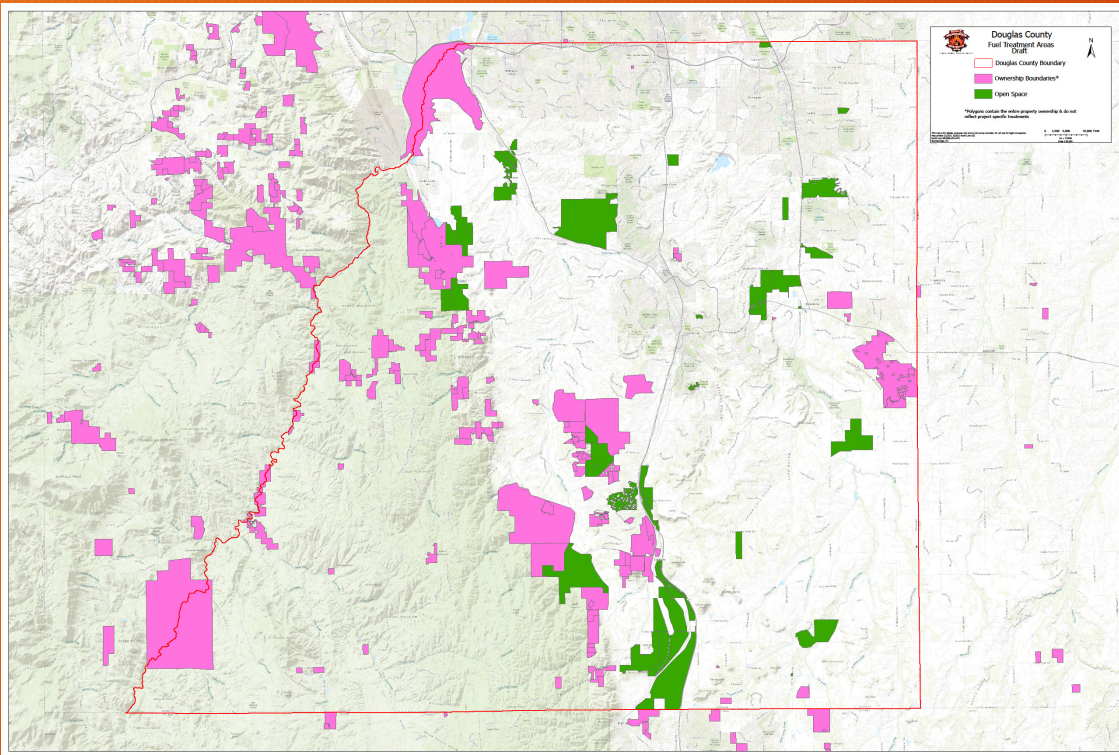
Unincorporated Douglas County has over 40 billion dollars in values at risk to loss from catastrophic wildfire. We continue to do very good work to protect these values:

- Development-wide mitigation on new development
- Defensible space requirements for new builds
- Public outreach and education
- Slash/mulch program (seasonal)
- Free hazard assessments for DC residents





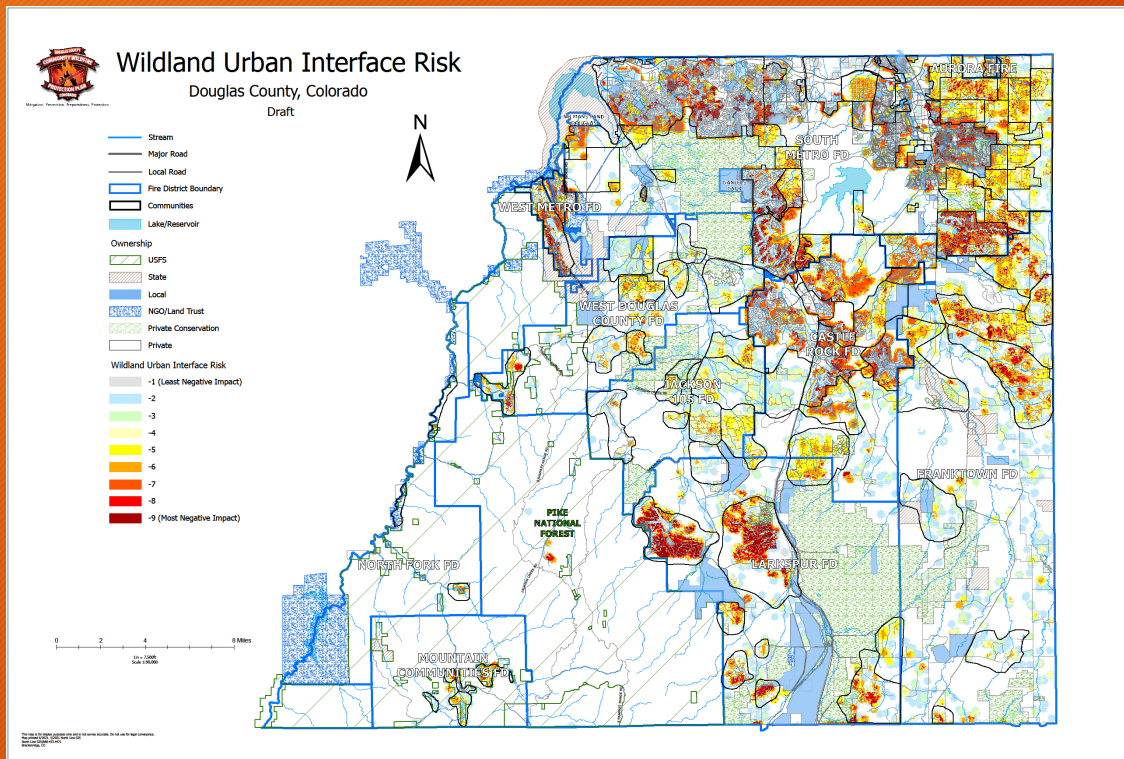
# Treated Areas



Since 2010 CSFS completed projects on approximately 9200 acres across Douglas County with multiple partners through multiple programs. There is still much to do.



# WUI Risk (Housing Density and Flame Length)

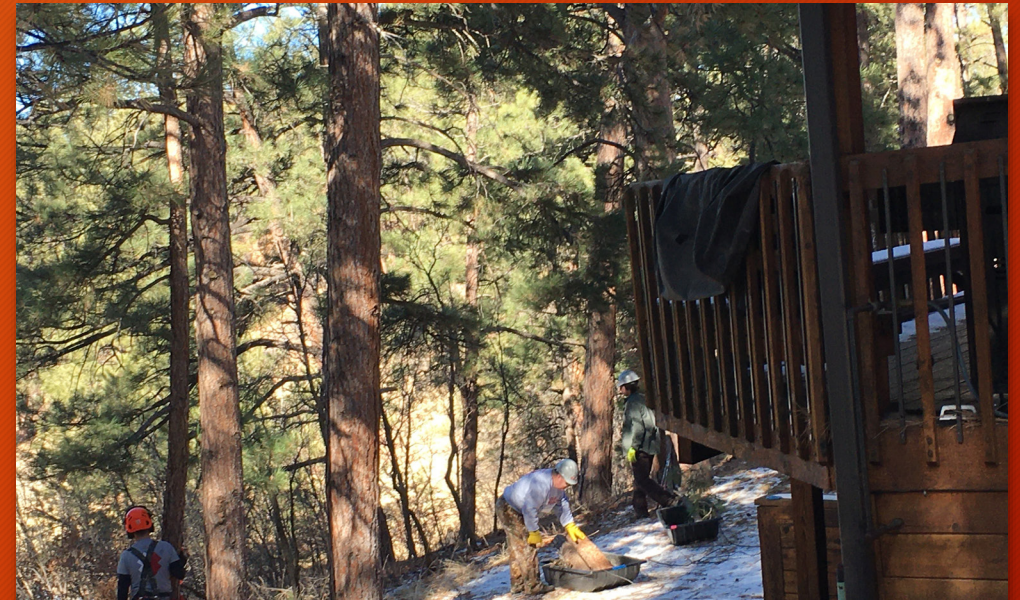


84% of the population of Douglas County is estimated to be in the WUI (282,267 people)



# WILDFIRE MITIGATION

- Every program of work has opportunity to improve
- Douglas County is doing good work, with your support, we can do more
- We have an opportunity to improve, before another catastrophic wildfire occurs in Douglas County





# WILDFIRE MITIGATION

- ACTION ITEMS:
- Pike National Forest - Continue work with our partners to support landscape scale treatments and management of the forest
- Open Space - Continue to expand and enhance land management and stewardship of County owned lands
- Private Landowners - Develop a new initiative to partner with private landowners and incentivize hazardous fuel reduction through matching funds on private land to ultimately change fire behavior and protect life and property
- Curbside Chipping/Hauling Program



# WILDFIRE MITIGATION

**\$1 SPENT**  
on mitigation work



reduces post-fire  
costs **BY \$5.**



Southwest Wildfire Impact Fund

- Support this private land initiative by adding 2 LB Temp Wildfire Mitigation Specialists, dedicated to public outreach and education, community organization, project development and project implementation
- Fund this initiative starting with 2 million dollars (ARPA) dedicated to matching funds for community projects on private land to create defensible-space around homes and fuel breaks around communities (600+acres @ \$3000/acre)
- Evaluate results to measure success and consider ongoing funding



# WILDFIRE MITIGATION

Questions?